



# OREAD MOUNTAINEERING CLUB MAGAZINE

**MAY 2021**



**A taste of freedom: the first evening climbing meet of 2021 at Harborough.  
Photo Chris Radcliffe.**

## **Editorial**

A breath of fresh air this month with meets reports and photos of club members enjoying the climbing and walking we love in good company at long last. Memories of the 1951 club dinner and more about the vintage photos in last month's issue.

Plenty of meets coming up soon, including an extra short walk on May 6<sup>th</sup>. Also a special plea for somebody to come forward to act as Health and Safety Officer. You will see, in the AGM minutes, on page 21, that the committee needs to appoint somebody to this role. Please contact any member of the committee if you think you might be able to help.

**Copy Deadline 20 May.**

## Forthcoming Meets 2021

**Here is the list of what we hope to be able to do as the year progresses. Obviously it is all subject to whatever regulations may be in force at the time but it would be really good if we could have some volunteers to lead some of the meets later in the year which currently have no leader. Please be in touch if you could help. We have produced a general risk assessment, following BMC guidelines, that meet leaders can use with a minimum of fuss for both walking and climbing meets, and I will be able to offer advice on how it applies to your meet.**

**Mike Moss: email xxxx**

<b>May</b>	1-3	Climbing meet	Kinder Scout southern edges	Michael Moss, Sat 1st May, but date TBC for best weather.
		12 Wednesday walk	Millers Dale	
	20	Short walk	Darley bridge circuit	Ruth Gordon
	22-23	Yorkshire camping & climbing	Yorkshire	Kevin Raisin-Moss. Venue meeting covid restrictions to be found
	22	Weekend walk	Staffs way section	John Green
	29-31	Spring BH camping meet	St Just, Cornwall	Michael Hayes
<b>June</b>		9 Wednesday walk	Ladybower	John Gwyther
	11-13	Camping meet	Short notice location	
	19-20	Mid summer BBQ	Heathy Lea Derbyshire	include BBQ if covid restrictions allow
	26-27	Camping meet	Northumberland	Spenser Grey. Suggested venue, could change
	26-27	Weekend walk	Venue TBD	
<b>July</b>	2-3	New members' meet	Heathy Lea Derbyshire	Ben Wooler
	2-3	Summer hike and bivvy	Berwyn Mountains	Pete Amour. Bleaklow fallback if forced by Covid restrictions
		7 Wednesday walk	Bonsall	Sue Todd
	13-17	TyW working party	Tan Yr Wyddfa	Snod (Dave Helliwell)
	17-18	Welsh BBQ	Tan Yr Wyddfa	include BBQ if covid restrictions allow
	24	Peak District Boundary Walk	Peaks	PDBW finale, Paul Gardiner
	24/7-15/8	Alpine meet	TBD	
<b>Aug</b>		4 Wednesday walk	Cat and Fiddle	Rusty (Clive Russell)
	21-22	Weekend walk	Venue TBD	
	28-30	Summer BH camping meet	Baggy point, Devon	Suggested venue, could change
<b>Sept</b>		8 Wednesday walk	Tideswell	
	10-12	Camping meet	Short notice venue	
	24-25	Lowstern hut, Yorkshire Dales	Clapham, Yorkshire Dales	Nigel Briggs, Yorkshire Ramblers Hut,
	25-26	Weekend walk	Venue TBD	
<b>Oct</b>	2	BARMY comp	Peak, Derbyshire	
		6 Wednesday walk	Ashover	
	9	Heathy Lea working party	Peak, Derbyshire	Chris Wilson
	16-17	Curry meet	Tan Yr Wyddfa	
	23-24	Weekend walk	Venue TBD	
	29-31	Strawberry cottage, Glen Affric	Scotland	An Teallach MC hut. Graham Weston. Some places from Sun 24th.
<b>Nov</b>		3 Wednesday walk	Brassington	
	5	Bonfire	Heathy Lea Derbyshire	
	13-14 TBC	Cwm Eigiau hut	Snowdonia	Janet Briggs
	20-21	Weekend walk	Venue TBD	
<b>Dec</b>		1 Wednesday walk	Wetton Mill	
	4	Annual Dinner, Fox and Goose	Nr Chesterfield	Heathy Lea to be booked
	10-12	Bullstones		
	15	Black rocks evening meet	Cromford, Derbyshire	
	18-19	Weekend walk	Venue TBD	
	24-3 Jan	Christmas and New Year hut mee	Tan Yr Wyddfa	

**Covid restrictions:**

A summary of the restrictions applying to England is available on the BMC web site, and on the government web site. The limit to groups of six is expected to apply until 17th May when groups of up to 30 will be allowed, and restrictions on overnight stays are also relaxed somewhat, which should allow more ambitious meets. Obviously all meets will have to be adapted to adhere to whatever restrictions are in place at the time.

**1 – 3 May Bank Holiday Kinder Scout Mike Moss**

Plan is a 10 am meet in the Edale car park. Walk up to the edges starting at Nether Tor, working along to Upper Tor, Crowden and the Pagoda. Finish at the Old Nags Head for beer. I might change the day to Sunday or Monday if the forecast for Saturday is relatively poor. Keep an eye on Facebook and the group email. If anyone would like to volunteer to lead something on either of the other two days of the bank holiday that would be great.

Email: [xxxxx](#)

**Thursday 6 May Hartington short walk Ruth Gordon**

Tony Howard has kindly offered to lead an extra short walk this month. Meet 10.45 for an 11.00 am start Hartington Market Place for a walk to Pilsbury Castle 5.5 miles. Bring a packed lunch. Please let me know if you are coming. Ruth Gordon tel. xxx email [xxx](#)

**Wednesday 12 May Walk Miller's Dale Stuart Firth**

Meet 10.30 at Miller's Dale car park GR 137 733. Route to be decided. Please let me know if you intend to come.

Stuart Firth tel. xxxx

**Thursday 20 May Darley Bridge short walk Ruth Gordon**

Meet at Darley Dale Cricket Ground car park SK 270 624 at 11.00 am to do a traverse of Oker hill, a mini-mountain with glorious views and subject of a Wordsworth sonnet. We will visit Wensleydale and Clough Wood (where the bluebells are stunning if we are lucky with the timing) and the remains of Millclose Mine. Please let me know if you are coming.

Ruth Gordon tel. xxx email [xxxx](#)

**21-23 May Yorkshire Climbing meet Kevin Raisin-Moss**

We have moved the meet on a week so as to benefit from easing of lockdown restrictions. By late May everyone should have honed their grit skills to be ready for some Yorkshire classics. We will be staying at Manor Farm Campsite, Summerbridge, Harrogate . A lovely quiet family site in the heart of the Yorkshire

dales. Well placed for Brimham, Almscliffe, Simons Seat. Cracks, slabs, wierd stuff: routes or bouldering enough for ten lifetimes.

Arive on the Friday night to make a full on weekend if it. Booking asap recommended as they have just opened bookings and expect to fill up.

Booking details:

Message David at Manor Farm on 07723 324504 with your pitch requirements, address (covid red tape) and mention you are part of the Oread climbing meet.

<https://www.facebook.com/Manor-House-Farm-Campsite-101534523273373/>

Kevin Raisin-Moss emailxxx tel. xxx

## **Saturday 22 May Staffordshire Way Walk John Green**

This walk should give members some idea of what the Staffordshire Way has to offer. We will meet at GR SJ8948 6276 on the picnic site free car park just out of Timbersbrook village. 10.15 for 10.30 start. From Derby take the A52/523 and turn left at Ryecroft Gate to Congleton, as the road descends take the first right to Timbersbrook and the Car Park. We follow the Staffs Way up “The Cloud” to its summit and wonderful views of the Cheshire plain. A descent to the Bridestones will give us a look at a really brilliant 3000 year old Neolithic chambered cairn. This is the only chamber left of the original three. We then continue along the road to point 222m and take the track to point 234, turn right and follow the road for half a kilometre. A path on the left takes us to the radio mast on the Overton Road. Half a kilometre of road walking past The



The Bridestones

Wednesday, March 31, 2021

Shepherd's Cross, a 14<sup>th</sup> century relic, takes us to Poolfold where a track west opposite the pub brings us out on the A527, 100 mtrs right should be a track to Congleton Edge and back onto the Staffs Way. Dropping from the edge we join the old railway which is now a trail. Along this for a kilometre then across to Overedge, Pool Bank and a short bit of road back to the car park. About 15 kilometres with a few good climbs. If the weather is fine, it will be a walk to remember. Please contact me if you are coming on xxxx  
John Green

## **Spring Bank Holiday Weekend 28-31 May or longer Cardinney Caravan and Camping Park, Cornwall**

We have managed to block book several camping pitches on this lovely campsite only three miles from St Just and Lands End. Places are limited so call the campsite on 01736 810880 to book your pitch and a £30 deposit will be required. Just mention the Oread when booking.

Hopefully by then we should be able to socialise outside freely and even visit the odd pub garden so I am sure this will be a popular meet as we all look to get back out again. The many Granite cliffs around Lands End like Chair Ladder and Bosigran are a perfect destination at this time of year and add to that the superb beaches and costal walking there is more than enough to keep everyone happy. We are booked on from the 28<sup>th</sup> to the 6<sup>th</sup> of June so if you can why not extend your stay !

Michael Hayes. Email XXXXXX

## **2-4 July New Members Meet Ben Wooler**



*A shot from the new members meet way back in 2018 which saw a fantastic turnout of old and new members.*

It feels like only yesterday that the 2020 new members meet was cancelled and now we find ourselves heading into spring 2021! I think we can all agree it is about time we dusted off our ropes and shoes for a slightly delayed new members meet to see just how weak our fingers have become.

The format of the weekend will likely involve a small group out climbing on the Friday evening then retiring to the Heathy Lea via the Robin Hood. Saturday morning we will then head out to a local crag to be confirmed nearer the time although probably Stanage.

Saturday evening will include a hearty meal provided by the club. The Chef is still to be determined and if no one volunteers it will be the meet leader (to everyone's risk), any budding caterers are encouraged and will be rewarded with beer. **Please ensure you inform the meet leader in good time if you are attending the meal and of any dietary requirements.**

Sunday will once again see us out at a local crag before heading home when enthusiasm or daylight fails.

The cost of the two nights in the hut plus Saturday's evening meal will be £10 payable on the weekend. Please come along and support your club, even if just a few hours out on the crag one day. These meets have brought many new members to the club and I think we can all agree it would be a good chance to get out and see some familiar faces without a webcam!

If you wish to attend or if you are a new member and would like any further information on what you may need or what you can expect please get in touch with the meet leader on xxxx The hut tends to fill up fast and will be allocated based on first come first served basis.

**Please note this meet will only go ahead in this format if national restrictions allow and we may need to adjust depending on the situation at the time.**

## **Wednesday 7 July Walk Bonsall Sue Todd**

Meet in Bonsall village by the Fountain Cafe grid ref. 281580 for a 10.30 departure. Early arrivals might want to take advantage of some quick refreshment, or, possibly at the finish depending on time. Plenty of free car parking next to the recreational ground opposite the cafe, or street parking. Please bring own packed lunch.

We will be walking in the hills and dales to the west of Matlock, and hopefully see some deer in Clough wood.

I'm assuming we won't be restricted by rules on numbers in July, but a text, phone call or email, to let me know you intend coming, would be very helpful so we don't leave without you. Thank you.

Sue Todd Mobile :-xxx Email:-xxx

## **Change to date: Women's Trad 100 – postponed to September!**

The women's trad climbing meet that the Pinnacle Club had been planning for June as part of the Club's centenary celebrations is still going to happen: but will now take place on September 4-12. The Women's Trad 100 will bring together up to 100 women climbers who are experienced and competent at multi-pitch trad, at whatever grade – and the Pinnacle Club would love to see

members of the Oread taking part. It will be based at the [Snowdonia Parc campsite](#), Waunfawr, Snowdonia. The meet will have exclusive use of the entire campsite, which also has an on-site pub serving food and with its very own brewery. Climbers can join the meet for the whole week or any part of it. Booking will now open in late April and places will be limited. More details at [pinnacleclub.co.uk/wt10](http://pinnacleclub.co.uk/wt10) and if you still have questions after that, email [pc100@pinnacleclub.co.uk](mailto:pc100@pinnacleclub.co.uk)

## Members Corner

### Stuart Firth asks:

I need to turn around 120 pages of pdfs into Word documents. Does anybody have access to Adobe software that could do this please. If you can help please be in touch. Stuart Firth email [xxxx](#)

## News and Reports from Meets

### First Wednesday evening climbing of 2021 Harborough



A good few Oreads took the first opportunity as the Covid 19 restrictions eased to get out, spread responsibly, of course, along the edge. We were blessed with a warm evening bouldering and trad, and then sipping a beer together as the sun went down. It was great to see each other in the flesh. The photos show Mike Wren on Overhanging Wall and some of the team nattering in the gloaming.

Here's to a splendid season's climbing . Mike Moss.

## Stanage 11 April Mike Moss



Five optimists headed to the edge on Sunday morning. We had it all for weather, graupel snow and periods of strong sunshine.

Graupel is just the right kind of snow, it rolls off the hand holds without making them wet, and shows up in the photos. The sun warmed us up just enough to get some classics done, just the job for the time of year.

Thanks to Lance, Alex, Kayleigh and Michael for making a good day, and again to Michael Percival for the photos. The ones above show me on the top and Kayleigh tackling Gargoyle Buttress and Amazon Crack.



We also have some pointers on technique to share. Here are two ways onto the ledge on Verandah buttress. Can you do it with more or less style? Entries to the newsletter editor.



## Wednesday Walk - Weaver Hills 14 April Stuart Firth

The official meet leader, Peter Amour, was unfortunately incapacitated for this walk but he had made splendid preparations that enabled yours truly to step into the breach. He had even booked excellent walking weather - sunny with a cool northerly wind and hence superb visibility.

The crew turned up at Ellastone near Ashbourne in good time and we were able



to set off a few minutes ahead of Peter's strict deadline. The area was surprisingly fresh to most of us and we ambled pleasantly along the Limestone Way squeezing past or striding over an infinity of stiles. Lunch was taken in the warm sunshine amongst a flock of curious sheep and their lambs.

Turning westward we eventually summited the Weaver Hills which afforded wide-ranging views in all directions. For most of us, this was a first ascent and something of a revelation. Subsequent correspondence with Tony Moulam revealed that he had beaten us to it by a mere eighty years.



Heading back towards our start point, we were delighted to find the ice cream farm touted was not only open but operating an honesty box arrangement; we took full and delicious advantage. We were somewhat disappointed that the original meet leader had not left money “behind the bar” but in view of his otherwise sound reconnaissance, accurate distance estimation and unfortunate indisposition, he was forgiven.



A final bonus was a post-walk drink at the Duncombe Arms, Ellastone which had just been recommended by The Times newspaper as one of the best forty pubs in Britain for outdoor dining. All in all, a fine day out.

## **A weekend at Heathy Lea James Tubby**

Many thanks to everyone who has been working to keep our huts going over the last few months. It's been an extra special effort given that those looking after the huts haven't been able to stay over or see them get used.

As soon as the government announced the roadmap for easing restrictions I contacted Mike and asked to book Heathy Lea for the weekend of 16-18 April for a family weekend away, which was as soon as I could get away.

It reminded me how lucky I am to be a member of a club with such facilities available. Over the last year or so we have all come to appreciate more the things we have nearby. We were pleased to be able to just get away for a weekend and at such a bargain rate. The weather was excellent as well which really helped so we could enjoy some fine walks and pub gardens. We were able to do our bit to help some local businesses with visits to the Robin Hood, Chatsworth farm shop & café and the Prince of Wales in Baslow. It was great to be able to sit at a pub and drink beers with other happy families and friends doing the same.

In time we will be able to get back to having club meets at the huts and many more members will be able to enjoy them. I'll finish the same as I started, many thanks to all those who work to keep our huts functioning. Your efforts are appreciated.

## A great weekend in the Lakes Chris Radcliffe



As this was virtually the first opportunity we had to go away, I had booked the FRCC hut in Langdale – Rawhead. We had this to ourselves as only one family group allowed. Saturday was a magnificent day with wall-to-wall sunshine and we walked up to Gimmer Crag from the New Dungeon Ghyll. We did a 3\* classic rock route – Bracket and Slab, 97m VS,4b (UKC).



The first photo shows Gill climbing The Bracket, an awkward traverse. The second photo is me emerging at the top at the end of pitch 5.

## **Gardom's meet 18 April Snod Helliwell**

The weather was fine and so was the company. In all, throughout the day about 30 Oreads attended including two new provisional members, welcome Ben and Penny, and Charlie's daughters who climbed most impressively in spite of not being able to reach the holds!

We walked up from Heathy Lea and started on Elliot's Crack on the way. Fortunately the two Pillar Cracks were out of the sun! Then we joined the throng assembled around Apple Aret-

that wonderful climb pioneered by Oreads, Dave Penlington and team. All the usual climbs in that area were ascended and a good time was had by all.



## **The inaugural Thursday short walk 22 April Ruth Gordon**



The weather was kind, glorious sunshine and wonderful views. Tom's route took us over the old lead workings to Harborough where we sat in the "Druid's chair" and took in the trig point before following the footpath down towards the Longcliffe quarries. Here we picked up the Limestone Way and up to the High Peak trail where a convenient bench provided a good picnic spot. Up the trail a bit to pick up a series of footpaths through the many little

dolomitic outcrops that make this such an unusual area. We had an interesting encounter with a tiny but stubborn pony that had no intention of letting us cross the stile into his field, followed by lazing in the sun above Rainster rocks and then back over close cropped fields – the dry weather must already be creating problems for farmers – to drop down into Brassington and back to the cars by 3.30. Thanks to Tom and Graham for a most enjoyable day made doubly interesting by all the snippets of local knowledge shared as we went along.

## **The Goes Wrong Show:**

Next instalment will follow in June, More stories will be very welcome.

## Past Times and Old Friends

### Honorary Encounters: Eric Byne – Tony Moulam

The Oread Dinner on 1<sup>st</sup> December 1951 was held at the Scotsman's Pack in Hathersage, a friendly pub which has since been overly modernised.



As was to be expected the weekend was cold and damp and Geoff Pigott and I left his house after a leisurely lunch, courtesy of his mother Frances. We drove from Cheadle Hulme to Stockport, then on by the A6 and over the watershed, from which we could already see the lights of the Hope Valley luring us to the east. At this time the main road was still open sweeping down below Mam Tor, before it was closed for good in 1979 by one of a series of landslides that had affected it intermittently since the 1880s. The welcome warmth of the pub was soothing as we entered from a depressing gloom that softened the atmosphere of Hathersage and Harry Pretty greeted us heartily with a pot of tea and biscuits (The bar was not yet open!).

We were soon refreshed and Harry introduced us to fellow guests including George Bower, of whom I knew as a senior Rolls Royce employee of the apprenticed Peter Harding. On one of our first jaunts outside the Peak District we had enjoyed some of his Severe routes on Dow Crag and wondered at his achievements, with Joe Roper, of Great Central Route and Black Wall. We had done the former in nails and a snowstorm only five years before. The fact that Colin Kirkus had fallen from South America Crack, resulting in a permanent re-arrangement of the features of his second, A B Hargreaves, only reinforced its aura.

These climbs had been invented in a previous life when Bower had been employed by Vickers in Barrow in Furness, and he had been the acknowledged local expert who wrote the first Fell and Rock guidebook to the cliff, which was then called Doe Crag but he had later come back south and pioneered, amongst other routes, April and Christmas Cracks at Stanage. The latter was celebrated

often by ascents on Christmas day, foreshadowing the Stonnis Club's exploits on Craig yr Ysfa's Grimmet!



During this pre-meal interlude I spent most of my time chatting with Eric Byne, my next honorary Oread, who I met for the first time, although we had been in touch on several occasions previously about guidebook matters, including Harding and my activities at Black Rocks and his Central By Pass Route on Tryfan.. Eric was (even in his 40s) a slightly built, rather diffident figure with an incipient Black Country lilt modifying his inborn Yorkshire burr. He had an obsessive collecting habit for Peak District walking and climbing history, and had even gone so far as to marry Ivy Critchley, one time secretary to Jim Puttrel, one of the earliest exponents of gritstone climbing!

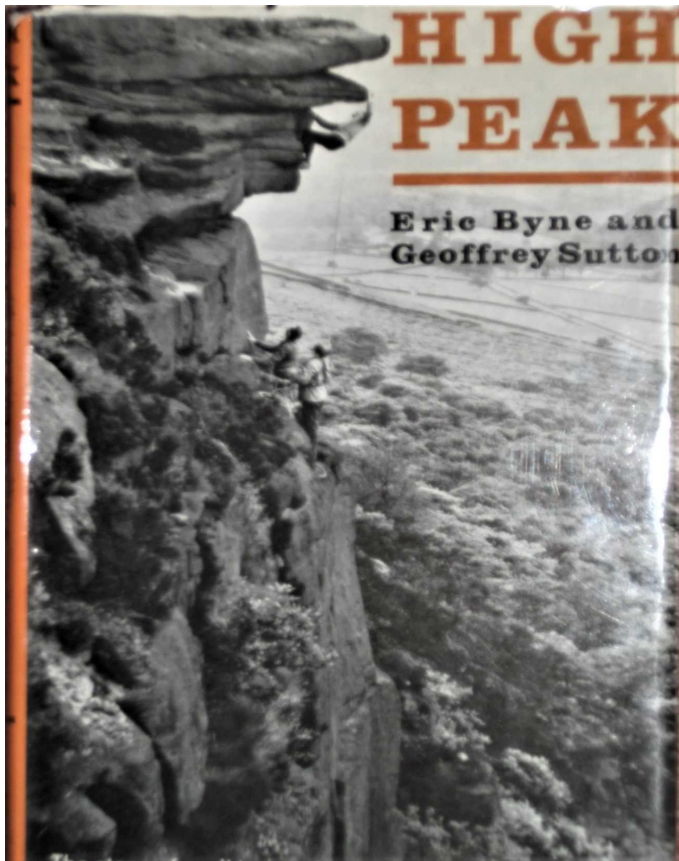
After about half an hour of interesting talk, during which the other principal guest,

Jack Longland, arrived, the bar opened opportunely as our teapot was empty! The noise level gradually increased as alcohol was imbibed until the President (to my shame I cannot remember who it was, and there is no clue on my menu) called for order and the horde to enter the dining room. The usual rollicking feast followed, enlivened by (according to my record) quite good speeches and an already traditional monologue by Oliver Jones, 'On Holy Matrimony'. The formal business over, we all returned to the bar for a regrettably short period because of the dreaded tyranny of closing time, at ten! Geoff and I drove off to Sheffield to stay with my sister and prepare ourselves for Kinder the following day.

We had had no physical exercise on Saturday so flesh mortification demanded a day on cold and wet grit! This was started by climbing Nether Tor Crack as it started to snow. Being sufficiently chilled we continued to the plateau in thick cloud and descended Crowden Clough where Geoff did the Crowden Gates leap! I refused to follow, as I have always believed it wise to keep at least one foot on solid ground. I failed miserably on a hitherto unclimbed layback cum hand jam crack but redeemed my pride by leading Crowden Clough Face. We finished our expedition with a stroll over Grindsbrook Knoll back to Edale before a drive to Cheadle Hulme for supper with the Pigotts.

Over the next few years I had intermittent contact with Eric, notably when I was writing the CC's 'Tryfan and Glyder Fach' guidebook and I consulted him about the new cliff he had exploited, Creigiau' Dena. In the late 40s, and in the early 50s the new climbs he had found on Tryfan's west face. They were all relatively easy but worthwhile additions to the repertoire in the area. We also talked generally about gritstone climbing whilst he and Geoff Sutton were polishing the

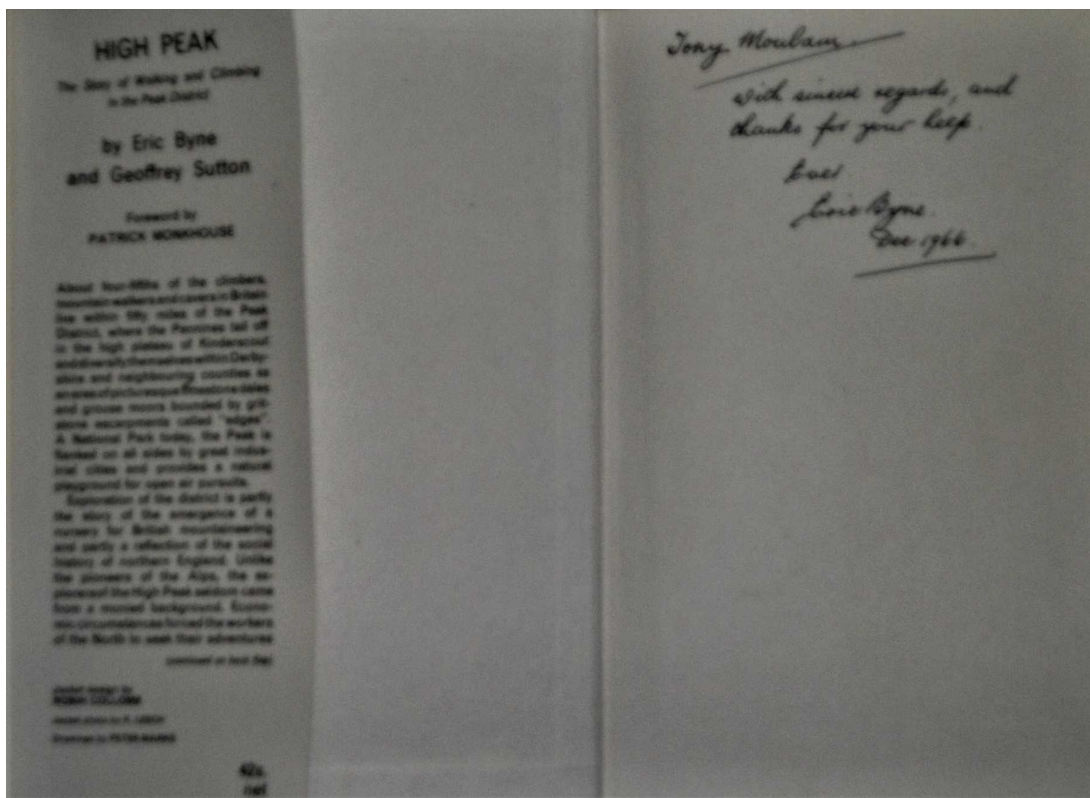
manuscript for 'High Peak' their encyclopaedic survey of rock climbing and bog trotting in the southern Pennines.



This publication was the culmination of many years' work but Eric also edited (and wrote parts) of the Peak District rock climbing guides for the BMC. Another gem was his lucid guidebook to the climbs on the complicated craglets of Brassington Rocks. This was published by the MAM in 1950, and I do not think that it has yet been superseded.

Below is Eric's dedication in my copy of High Peak.

“with sincere regards and thanks for your help.”



The last time I saw Eric was again at a club dinner, this time The MUMC's, on 23 November 1963. In conversation afterwards I found that we shared an interest



in philately and he happened to have with him a duplicate book full of early Victorian stamps which he pressed me to accept. He also recommended to me a retired Norwegian mariner, Captain Jahr, who dealt with Scandinavian stamps. This was another region in which I was interested and I dealt with him for several more years- until he gave up the business.

Eric also told me that he now suffered from Parkinson's disease, but I did not realise that he was to die, within the next five years. He will be remembered for reasons mentioned above and, of course, for the camp site memorial below Birchen Edge.

To finish I will record that one of my favourite gritstone routes is his crack, at Burbage Edge and a quote from Jack Longland's obituary for

the Alpine Journal: '... though he was much too modest to see himself as a symbol, Eric Byne was the living link who brought together the two main groups in British climbing, those from an academic, professional, traditionally leisured background, and those from the cities and industrial towns who had to learn their craft during evenings and snatched weekends in the nearest climbing ground.'

### Tony Smedley's books.

There are still plenty of 'classic' mountaineering books available to claim (well for a for a voluntary contribution to the Derby Hospital fund). The full list was published in the last Newsletter. Have another look and see if there are any titles that are missing from your collection. Or there are many books to read that will build your mountaineering history knowledge.

As I said in the last Newsletter here is the highest current bid on the more valuable books. The bidding procedure is in April Newsletter. Bids close two weeks after the electronic distribution of this Newsletter.

Title	Author	Highest Bid
Tales Of Mountaineering	Stefano Ardito	£20
50 Years Of Alpinism	Ricardo Cassin	£20
The Black Cliff	Crew, Soper, Wilson	£40
Total Alpinism	Rene Desmaison	£30
Climb If You Will	Jack Longland	£60
Yosemite Climber	George Meyers	£35

Oread MC 50th Journal (signed)	Harry Pretty	£30
Hard Rock	Ken Wilson	£35

This is a great opportunity to get a yourself one, or more, books, have a memento of Tony and support a local charity in Tony's memory.

## Janet Ashcroft

Jack Ashcroft writes:

On behalf of myself, and my sons, Ian, Peter and David I wish to thank all the club members who sent so many kind messages, letters and cards. They have been very much appreciated and a great comfort at this sad time.

## Hut Bookings.

**Both huts are now available for booking in accordance with current Covid 19 legislation.**

All queries and outstanding payments should be addressed to Michael Hayes, the Hut Bookings Secretary: 179 Starkholmes Rd. Starkholmes, Matlock DE4 5JA Mobile 07771 700913. Email: [michaelhayes6688@gmail.com](mailto:michaelhayes6688@gmail.com)

When paying the club by bank transfer could you please use the 'Reference' box to say what the payment is for. **In particular if it is hut fees please say which hut, ie Hut fees HL, or Hut fees TyW.** Your name is not necessary in the reference, unless it is different from the bank account name.

## Information on Member Activities

Welcome to new full member, Tom Corker and new Provisional member Penny Garner. We hope you will enjoy many happy times with the Oread.

## Rusty's Puzzle Corner

### Last month's puzzle solution:

Supposing the turn was at the same level as the start:

Time out on the flat=1.5*9 or	13.5 mins
Add 10% for headwind	1.35 mins
Time out due to hill =170/60 OR	2.833 MINS
Add 10% for wind	0.283 mins
Time back on flat	13.5 mins
Time back due to hill	2.833 mins

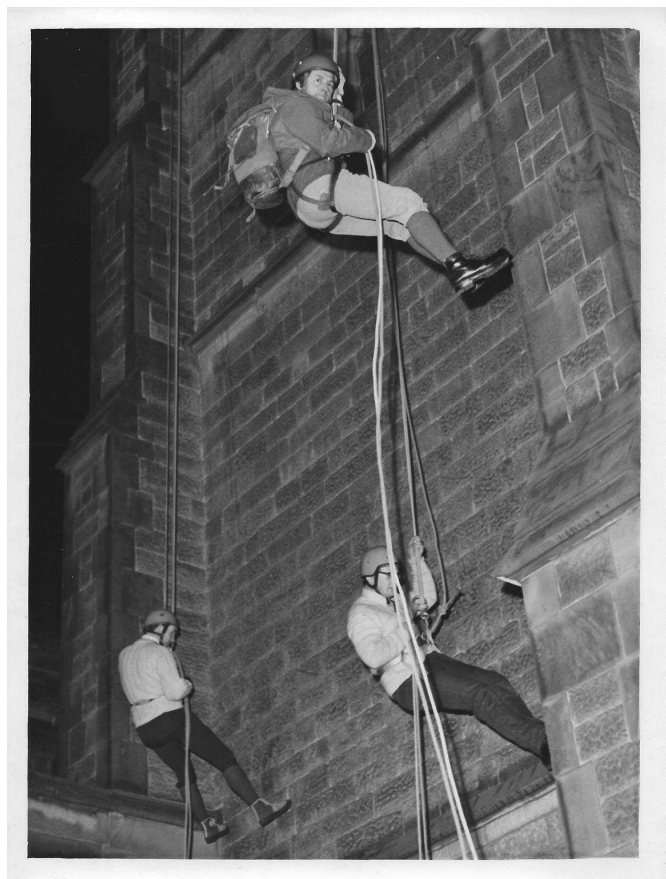
Total 34.299mins  
 We are looking for 34.4 mins or 0.101 minutes extra  
 Extra time for each additional 10 ft of climbing  
 On outward run =  $10/60$  or 0.167 mins  
 Add 10% for wind 0.0167  
 Deduct for less climbing on return (0.167)  
 Nett increase 0.167 mins  
 Therefore height =  $10 \times 0.101 / 0.0167$  or 60.47ft  
 On a computer, working to more places of decimals, it comes to 60ft  
 Therefore turn is at altitude 760 feet.

Snod produced a workmanlike calculation along similar lines but produced an answer of 112 ft. I am not entirely sure but I believe he omitted the extra time element on the horizontal element of the outward run, hence the discrepancy

### **This month's puzzle**

Two honorary Oread members of a generally different era were first ascentionists on climbs which were different in many respects, one a multi pitch route in excess of 400 ft, the other a simple rope length, the rock was different and they were not even in the same UK nation. What adjective could be applied, without any possible contradiction, to both routes?

### **Photo puzzle.**



Rusty himself provided the answer to this puzzle: "the photograph is climbers (including myself but I'm not in the picture) abseiling from Beeston Church to publicise the launch of the book "Climb if You Will"

I remember Ron Chambers, Mick Berry and Nat Allen being present plus several others, the bespectacled figure in the picture might be Mick but I do not actually recognise any of them."

Colin adds "The people in the photo are Gordon Gadsby, Colin Hobday, Mick Berry. Others present included Stuart Bramwell, Chuck Hooley, Rusty Russell and Paul Gardiner. The launch was held at Beeston Library on 14 March 1974.

## Harry Pretty's photograph of an Oread outing.

Below is, hopefully, a complete list of the attendees and a best guess at time and place.



**Front row:** Don't know the two children, Hereward Tresidder, Rob. Tresidder, Tim Cairns right at front, Freda Raphael, David Jones looking away from camera, Jenny Raphael, and daughter, Mike Wren, Andy Oakden, Digger Williams.

**Next row:** Colin Hobday, Pam Norris (head only), Paul Howe, Rock Hudson, Anne Squires, Reg Squires, Uschi Hobday, Janet Ashcroft, Nodge Norris?, Stuart Godfrey?, Stuart Firth, Derek Burgess, Edith Colley, Gill Keeling, Tony Raphael, Mick Keeling, Margaret Russell, Roy Eyre, Joan Pike, Derek Pike, Fred the dog, Rusty Russell.

**Back four:** Harry Pretty, John Shreeve, John Fisher, Brian West.

The occasion is probably a Spring Stride that started in Warslow in 1997 or 98. The location may be somewhere near Elkstones. The photographer is not known but unlikely to be Harry as he is in the picture.

## **AGM 2021 Minutes**

N.B. The Officers reports are not included in this newsletter as they were all published in the March newsletter.

### **OREAD MOUNTAINEERING CLUB**

Annual General Meeting, Thursday 25<sup>th</sup> March 2021

8:00pm Zoom

#### **Minutes**

**Present:** Nigel Briggs (chair), Simon Pape (Secretary), Peter Amour, Lance Baker, Stephen Bashforth, Nicola Bashforth, Nigel Berry, Jean Bingham, Paul Bingham, Janet Briggs, William Clarke, Christine Eyre, Roy Eyre, Stuart Firth, Sue French, Paul Gardiner, Christabel Goode, Ruth Gordon, Spenser Gray, Helen Griffiths, Michael Hayes, David Helliwell, Colin Hobday, Uschi Hobday, Peter Johnston, Chris Jonson, Pete Lancaster, Roger Larkam, Pip Leach, John Linney, Chris Martin, David Mason, Mike Moss, Maggie Pape, Michael Percival, Robert Pettigrew, Chris Radcliffe, Gill Radcliffe, Tony Raphael, Christine Renouf, Kasia Sajdok, Peter Scott, Pam Storer, Rob Tresidder, Rachel Walker, Philip Waterson, Yvonne Waterson, Graham Weston, Chris Wilson, Jan Wilson, Ben Wooler, Mike Wren.

All the officers' reports had been circulated in advance and were not read out at the meeting. They are attached to these minutes. The membership were requested to submit questions in advance.

#### **1. Apologies for absence**

Steve Christian, Nick Evans, Tony Howard, Dave and Janet Pennlington, Richard Hopkinson, Derek and Joan Pike.

#### **2. Minutes of the 2019 AGM**

The minutes were accepted as an accurate record of the proceedings. Proposed Dave Helliwell, seconded Roger Larkam.

#### **3. Matters arising from those minutes not covered elsewhere**

Stuart Firth submitted this question in advance: "2019 Minutes said that a H&S Officer would be appointed; this year's agenda is silent on this. Huts being possibly the most likely area where the Club could be liable to litigation and therefore to avoid potential conflict of interest, this role should probably be separate from hut wardens."

Chris Wilson had taken on the role after the 2019 AGM, but stood down when he took over as Heathy Lea Hut Custodian in 2020. Mike Moss was appointed as a Covid-19 officer in 2020. The new committee will need to appoint a new H&S officer – any volunteers welcome. Chris has the details.

#### **4. President's Report**

Since the President, Nigel Briggs, had written his report, we have been notified of the sad passing of Janet Ashcroft. The Club would like to pass condolences to Jack and the family. Roger Larkam submitted this question in advance: "Who is upgrading the website, and what functionality will it then have?"

Nigel passed this to Janet Briggs to answer. A sub-committee of 7 have been looking at the options. The upgrade is being done by Pete Sterling, who has also done the CC, F&RCC and the Yorkshire Ramblers websites. The new site will have a cleaner, fresher look and will be easier to update. There will be facilities to update members' details, view and make hut bookings and book onto meets. GDPR has been considered and the website will be compliant.

#### **5. Treasurer's Report**

The Treasurer, Janet Briggs, raised the issue of Corporation Tax. This had been raised by Helen Lane, our Examiner of Accounts, in paragraph 3 of her report. Following receipt of grants from County Councils, it is more likely that we will be picked up by HMRC. We have looked into Community Amateur Sports Club status, which would give us tax exemption, but the regulations stipulate that 50% of the membership have to participate in club activities 12 or more times per year. The Oread would struggle with this.

Janet is proposing that we talk to HMRC and possibly end up paying some tax. We can back date some of the surplus to cover losses from last year and we would also be able to reclaim some of the tax if we make a loss this year. We are also able to claim tax relief on hut expenditure.

It was asked if there are other groups besides the BMC that could provide advice – there should be some BMC advice on issue soon. Bob Pettigrew suggested that the Sport & Recreation Alliance, the umbrella group for the sector, may be able to help. He would be happy to approach them on our behalf.

Roger Larkam submitted two questions in advance: "Why was 2019 Heathy Lea rent £246 more than the 2020 figure?" and "Is the reduction on 2020 subs received in advance a measure of payment delay or of the number of members taking advantage of the subs reduction? What were the 2019 membership numbers and what are they currently?"

Janet explained that the Heathy Lea rent increase due in 2018 was deferred during the lease negotiations. The 2019 figure includes the rent increase for 3 quarters of 2018. The lease provides for an uplift in rent every three years, so the rent in 2021 has gone up by £120 per annum.

The subs reduction is a combination of both factors. In 2020 71 members renewed before the year end; in 2021, only 62. Approximately 20% of the membership who paid early for 2021 paid at the reduced rate. The proportion was higher amongst the late payers. In 2020 we had 192 members in total, 184 full members and 8 provisional. In 2021 we have 178 members in total, 174 full members and 2 provisional. We have 9 honorary members.

Graham Weston asked if we have considered life membership. We haven't, but we could do in the future.

Stuart Firth submitted this question in advance: "What is the Club policy on keeping the valuation of Tan yr Wyddfa up-to-date please? The current one is dated 2015". The Club has no valuation policy. Janet will check with Helen Lane (Examiner of Accounts) how often we should have Tan yr Wyddfa valued.

#### **6. Approval of 2019 and 2020 Accounts**

The 2019 accounts were approved, proposed by Stuart Firth, seconded by Mike Wren.

The 2020 accounts were approved, proposed by Roger Larkam, seconded by Tony Raphael. Janet was congratulated on the standard of the accounts.

Helen Lane was reappointed as Examiner of Accounts by a unanimous vote.

### **7. Tan yr Wyddfa HC Report**

No questions were raised. Stuart Firth pointed out that the FRCC have had problems with a burst pipe at their unoccupied hut in Aviemore. Dave Helliwell explained that he had been able to turn the water off at TyW before lockdown and that the insurance company had extended the allowable period of unoccupancy.

### **8. Heathy Lea HC Report**

Chris Wilson added that he has asked Chatsworth for an update on the Severn Trent building, but as yet has had no reply.

### **9. Election of Officers**

Nigel thanked Ben Wooler and Spenser Gray for their hard work as committee members and thanked David Mason for volunteering to join the committee. Nigel also explained that in these exceptional circumstances the committee had decided that he should serve three years as President to allow him to (hopefully) attend a few meets as President.

Stephen Bashforth proposed that the following should be elected en bloc, seconded by Roger Larkam.

- President: Nigel Briggs
  - Vice President: Dave Helliwell
  - General Secretary: Simon Pape
  - Membership Secretary: Michael Hayes
  - Treasurer: Janet Briggs
  - Hut Bookings Secretary: Michael Hayes
  - Hut Custodian Heathy Lea: Chris Wilson
  - Hut Custodian Tan yr Wyddfa: Dave Helliwell
  - Meets Secretary: Michael Moss
  - Communications Officer: Ruth Gordon
  - Additional Committee Members: Pete Lancaster, Mike Wren, David Mason
- 
- Heathy Lea Hut Committee: Chris Wilson, Steve McDonagh, Michael Hayes, Pam Storer, Mike Wren
  - Tan yr Wyddfa Hut Committee: Dave Helliwell, Chris Eyre, Roy Eyre, Dave Appleby, Derek Pike, Pam Storer, Ruth Gordon.

All were duly elected by a unanimous vote.

Nigel expressed his thanks to the committee and other members for keeping the Club going in a difficult year. Members felt that the format of sending reports out in advance worked well and should be continued in future years. Stephen Bashforth wondered if we could hold future AGMs as hybrid meetings so members could attend in person or via Zoom.

Bob Pettigrew was congratulated on his sartorial elegance, even on Zoom. Bob responded by expressing how much he has enjoyed the newsletter during lockdown and expressed his heartfelt thanks to Ruth for all her hard work.

*Editor: Ruth Gordon, 4, The Terrace, Upper Lumsdale, Matlock, Derbys. DE4 5LB  
Tel. 01629 56636 07999 857 922. Email [alistair.ruth@btinternet.com](mailto:alistair.ruth@btinternet.com)*