



# OREAD MOUNTAINEERING CLUB MAGAZINE

**APRIL 2020**



**Sunset over Y Garn taken for you all from Tan yr Wyddfa as the hut closes on 19 March. photo – Snod Helliwell.**

## **Editorial**

What can I say?

I guess we all have to deal with this horrible situation in whatever way gives us a chance of staying sane. Good luck in finding ways of dealing with the current restrictions.

Among the things that will keep you out of worse mischief – please think about sending something for the next newsletter to raise our spirits. A photo, an anecdote, a tale of walks, climbs, adventures from the recent or long ago past – anything to cheer us up – or something so grim and bleak we will feel happy to be preserved from such horrors! I used to belong to a Creative Writing group – believe me, hours can pass in a flash while you try to recreate an experience in words. Email or text documents are great but hand-written by post is just fine!

**In this issue is all the information usually available at the AGM** and a process for asking questions, making comments and circulating these with the answers from the relevant committee members just as if we were in a face to face meeting. Best we can do under the circumstances.

Looking forward to hearing from you all.

**Copy deadline for next issue is 23 April.**

## **The Oread Needs You!**

The Club urgently needs a volunteer to be **Heathy Lea Hut Custodian**. The Club cannot function without someone to take on this essential role at the 28 March AGM. Please think seriously whether you could do this, or part of it - perhaps share this role with a friend?

It is an organisational role rather than someone who has to do all the work as there is a Hut Committee to share the practical work, DIY etc and several people who regularly help with hut checks.

## **Forthcoming meets 2020**

The meets programme for the coming year is temporarily suspended. Nigel Briggs. Email for Meets Secretary remains [oreadmcmets@gmail.com](mailto:oreadmcmets@gmail.com)

## **Lofoten July 2020? Derek Pike**

As things stand at the moment with this virus and its associated travel restrictions and the uncertainty of how long it may continue, possibly into next year, I shall not be taking any more bookings. The Hayes, Briggs and Pikes are already booked onto a site at Kabelvåg for 14 nights from the 22nd July but this may have to be postponed to another year, we will just have to wait and see. If you wish to discuss please contact me at [derepike1234@btinternet.com](mailto:derepike1234@btinternet.com) or 07876 238312

## **28 March Annual General Meeting: postponed.**

Due to the current extraordinary circumstances the Committee has had no choice but to follow Government advice and postpone the meeting. However some of the information normally provided at the AGM has already been circulated and all the Officer Reports are printed below. A date will be set later, when normality has returned, to hold the delayed meeting to ratify the decisions your Committee has taken, in so far as possible according to our constitution, at this difficult time.

The **Agenda** was to be as follows:

## **Oread Mountaineering Club Annual General Meeting. Saturday 28<sup>th</sup> March 2020 Deferred until further notice.**

### **AGENDA**

- Apologies for Absence

- Minutes of the 2019 AGM
- Matters arising from those minutes
- President's Report
- Treasurer's Report
- Tan yr Wyddfa HC report
- Heathy Lea HC report
- Election of officers. The following nominations have been received:
  - President: Nigel Briggs
  - Vice President: Dave Helliwell
  - General Secretary: Simon Pape
  - Membership Secretary: Michael Hayes
  - Treasurer: Janet Briggs
  - Hut Bookings Secretary: Michael Hayes
  - Hut Custodian Heathy Lea: **SITUATION VACANT**
  - Hut Custodian Tan yr Wyddfa: Dave Helliwell
  - Meets Secretary: Michael Moss
  - Communications Officer: Ruth Gordon
  - Additional Committee Members: Pete Lancaster, Chris Wilson, Ben Wooler
  
  - Heathy Lea Hut Committee: Steve McDonagh, Michael Hayes, Pam Storer, Rob Beck.
  - Tan yr Wyddfa Hut Committee: Dave Helliwell, Chris Eyre, Roy Eyre, Pam Storer, Ruth Gordon, David Appleby, Derek Pike,
- Proposed Constitution Amendments
 

Changes have been proposed to the following three clauses, with the additional text highlighted in red.

7.6 The Treasurer shall be a signatory of the account(s). Additionally the Committee will nominate a minimum of three elected Club members **who are not related to each other** as signatories for the club account(s) of whom at least two shall have access to see all transactions in the Club's bank account(s).

7.8 Any cheques drawn against club funds should hold the signatures of at least two signatories **who are not related to each other**.

11.1 The Club can only be dissolved by a two-thirds majority vote at a General Meeting. Any liabilities at the time of dissolution, if the assets of the Club are not sufficient, shall be the joint responsibility of all Full Members. The Committee will arrange to discharge any remaining assets by donating to Charity or to organisations with similar aims and objectives to the Oread **and approved by a majority vote at a General Meeting**.

Simon Pape – General Secretary

**See notes below for the way forward:**

**Minutes.**

The Minutes of the 2019 AGM were circulated to all members in June 2019 and again recently to those with email addresses.

Questions and corrections are invited.

### **Officer Reports.**

All Officer Reports, the approved accounts and 2020 budget follow together with an additional paper on the financial implications of the closure of huts. Questions and comments are invited.

### **Election of Officers.**

As no conflict in nominations has arisen no elections are required so the Committee proposes to co-opt Spenser Gray, Michael Moss as Meets Secretary, Rob Beck to the Heathy Lea Hut Committee plus David Appleby and Derek Pike to the Tan yr Wyddfa Hut Committee.

A volunteer to take on the vacant post of Heathy Lea Hut Custodian is urgently required.

The new committees will work together, to keep everything ticking over, in whatever way seems appropriate in the circumstances.

**The proposed minor rule changes to the Constitution are not urgent and will be deferred to our next General Meeting.**

**Questions and comments** are welcome from any member and should be addressed to the Secretary, Simon Pape. These will be circulated to the committee to respond. Then the questions and from whom they came and the responses, with the name(s) of the Officer(s) who have replied will be circulated to the entire membership via the newsletter.

**All correspondence to be sent to:**

**Simon Pape, 41 Intake Lane, Cromford, Matlock DE4 3RH email [simon.pape66@gmail.com](mailto:simon.pape66@gmail.com)**

## **President's Report.**

We are living in strange and difficult times: this is what I was planning to say to you at our A.G.M.

Our 70<sup>th</sup> anniversary year got off to a splendid start with a very well attended repeat of the Oread first meet to Black Rocks and a walk to Harborough, venue of the second meet. It continued with many well supported meets including a very successful new members meet that brought in several enthusiastic new recruits – thanks Ben for organising that one. The Boundary walks have continued to draw good numbers of all ages, and the Wednesday walks have become a well established part of the calendar. Thanks to Stuart for organising those. There have been many successful meets with excellent weather and of course a few complete wash-outs – special thanks to the hardy souls who support meets no matter how dire the weather – I was so happy that High House was full for my meet in June in spite of a very iffy forecast. And the intrepid Bullstoners enjoyed the proper Bullstones weather I ordered for them with snow, hail, thunder and high winds. All in all an excellent meets programme, thanks to Spenser and Nigel for their hard work to set it up and to Mike Moss for volunteering to take on this essential role in future. Thanks also to everyone who

has led a meet this year, both those who do a meet every year and the brave ones who have volunteered for the first time. Your willingness to take on leading a meet is really appreciated.

Thanks are due to lots of people who do their bit – over and above:

To everyone who worked so hard to transform Heathy Lea, particularly of course Phil and Yvonne. An inside loo – whatever next! We are still looking for someone to take over as Custodian – they are a hard act to follow - but they have done all the hard work so don't be afraid!!!

Thanks to Rob Tresidder for yet another brilliant series of talks over the winter months.

To Maggie Pape and Chris Radcliffe for continuing to act as our trustees.

To Nigel and Ruth for rescuing the near nightmare of our cancelled dinner venue. To Chris and Gill Radcliffe for finding the venue and offering to organise the next one. Let's hope it can happen!

To Derek Pike for making the stunning plaques for our huts. Such a splendid advertisement for the club as walkers pass the hut on their way to and from Rhyd Ddu.

To Mike Wren for his long years of looking after the Club website, to Simon Wren for generously agreeing to take over as Webmaster and develop the existing website to fit our current and future purposes.

In another way our 70<sup>th</sup> anniversary year has been a very sad one. In the last year we have said farewell to three of the original founder members, Nan Axon, George Sutton and Molly Pretty and to other long-term members and friends, Pete Janes, Keith Gregson, Roy Sawyer, Margaret Foster. We miss you.

On a happier note the club has continued to thrive with many enthusiastic new members and it is particularly pleasing to see so many of last year's provisional members becoming full members this year. I am very sad that the big increase in BMC subscriptions has forced us to raise our own subscriptions and as a result a few long – term members have felt unable to continue. Thanks to all of you who have stuck with the Oread.

What will the future bring?

I could never have imagined that my two years as President would end in such a devastating way – the huts closed, the meets list – the lifeblood of our club – cancelled. We had some great venues I was so much looking forward to. Being told to hide away from one another rather than get together to enjoy the outdoors is so contrary to everything we are about. All I can say to you is – remember the original motto of our club “Mountaineering Regardless.” In the current situation we cannot just carry on regardless of other people's safety – or our own – the last thing any of us needs right now is to be in A & E for emergency medical treatment! But we can find ways to keep to the spirit of those words. Get out

locally as much as possible, share good times we have had, recently or in the past - write up the great route you did last year or that amazing holiday ten years ago and keep in touch with the friends we cannot share the outdoors with right now. Let us hope that before too long we can all be enjoying the outdoors again and the companionship the club brings.

Dave "Snod" Helliwell

## **OREAD MC**

## **Treasurer's Report to the 2020 AGM**

The Receipts and Payments Accounts, and Balance Sheet for the year 2019 are attached.

### NOTES:

1. The club returned a deficit in the year of just over £2400, as compared with a deficit of £1900 in 2018. In both years the deficit is accounted for by the improvements to Heathy Lea, as agreed at the SGM in September 2018.
2. If the 2019 capital spend on Heathy Lea (£3864) is excluded from the payments the club returned a surplus of £1450.
3. The predicted spend on Heathy Lea improvements was £10,400. The actual spend in 2018/2019 was £11,100, of which approx. £700 was on sundries such as electrical and plumbing fittings, paint etc. The predicted annual running costs post improvements for Heathy Lea was estimated as £6680, in 2019 the actual cost was £6654. I congratulate those who were involved in putting together the estimated costs for the Heathy Lea report in 2018, they seem to be remarkably accurate.
4. During the year just over £2900 was spent on improvements to Tan yr Wyddfa. This is over the budget of £2500 (1% of value as suggested in the Forward Thinking Group report), however once the underspend in 2018 is carried forward it is within budget for the two year period.
5. Both payments and receipts for Indoor Meets / Dinner were considerably higher than in 2018. This was partly because the dinner was well attended, but more expensive than last year. Also £500 was spent on a new projector for the evening lectures.
6. The cost of utilities at Heathy Lea is considerably higher than in 2018. This is because of increased electricity usage following the fitting of more storage heaters and was predicted in the Heathy Lea report of 2018.
7. In 2019 the club received 3 donations from members amounting to £400 towards the costs of improving the huts, and also donations amounting to £232 in memory of George Sutton following his funeral. May I take the opportunity, on behalf of the club, of thanking those who made donations.
8. The subscription rates have been increased this year, mainly to cover the considerable

increase in the levy we pay per member to the BMC. In addition, we have made adjustments to the membership categories and rates to reflect benefits received.

9. In summary the club's finances are in a healthy state. We are able to provide benefits for members such as the booking of huts for meets; the running of our huts for our members and others in the mountaineering community; and keeping everyone informed through the website and newsletters, whilst maintaining a reasonable level of reserves for contingencies, particularly with respect to Tan yr Wyddfa.

The accounts have been inspected and approved by our Examiner of Accounts: Helen Lane, of Dains Accountants.

I would like to recommend that Helen be appointed as Examiner of Accounts for 2020.

### **Oread Mountaineering Club**

#### **Chartered Accountants' Report to the Members of the Oread Mountaineering Club on the Unaudited Accounts**

In accordance with instructions received, we have prepared for your approval the accounts of Oread Mountaineering Club for the year ended 31 December 2019, set out on pages 2 and 3 from the entity's accounting records and from information and explanations you have given to us.

As a practising member firm of the Institute of Chartered Accountants in England and Wales (ICAEW), we are subject to its ethical and other professional requirements which are detailed at [icaew.com/members/handbook](http://icaew.com/members/handbook).

This report is made solely to you, in accordance with the terms of our engagement. Our work has been undertaken solely to prepare for your approval the accounts of Oread Mountaineering Club and state those matters that we have agreed to state to you in this report in accordance with ICAEW Technical Release TECH08/16AAF. To the fullest extent permitted by law, we do not accept or assume responsibility to anyone other than you, for our work or for this report.

You have approved the accounts for the year and acknowledged your responsibility for them and for providing information and explanations necessary for their compilation.

We have not verified the accuracy or completeness of the accounting records or information and explanations you have given to us and we do not, therefore, express any opinion on the accounts.



**Dains LLP**  
**Chartered Accountants**

**18 February 2020**  
**St. John's Court**  
**Wiltell Road**  
**Lichfield**  
**Staffordshire**  
**WS14 9DS**

**Oread Mountaineering Club**  
**Receipts and Payments Account for the Year Ended 31<sup>st</sup> December 2019**

	2019	2018
	£	£
<b>GENERAL RECEIPTS</b>		
Subscriptions	6,244	6,011
Indoor Meets / Dinner	2,868	2,025
Outdoor Meets	1,097	2,141
Training Courses	-	753
<b>GENERAL RECEIPTS TOTAL</b>	<b>10,209</b>	<b>10,930</b>
<b>HUT RECEIPTS</b>		
Tan Yr Wyddfa – Hut Fees	11,029	8,762
Heathy Lea - Hut Fees	5,033	5,071
Donation	632	999
<b>TOTAL RECEIPTS</b>	<b>26,903</b>	<b>25,762</b>
<b>GENERAL PAYMENTS</b>		
BMC	2,950	2,814
Bank Charges	-	184
Printing / Postage / Stationery	968	1,107
Web Site	152	155
Indoor Meets / Dinner	3,389	1,679
Outdoor Meets	982	2,970
Training Courses	-	750
Solicitors / inspection of accounts	1,560	1,900
Donations	60	200
Travel Expenses	-	29
<b>TOTAL GENERAL PAYMENTS</b>	<b>10,061</b>	<b>11,788</b>
<b>TAN YR WYDDFA PAYMENTS</b>		
Insurance	1,195	1,163
Utilities (elec, water, waste)	3,681	3,210
Consumables (cleaning, toiletries, coal)	226	311
Regular Maintenance, inc. gas tank	267	432
Improvements / Replacements	2,918	692
PAT / Fire / Gas Tests	253	142
Travel/ Miscellaneous	-	36
<b>TOTAL TAN YR WYDDFA PAYMENTS</b>	<b>8,540</b>	<b>5,986</b>
<b>HEATHY LEA PAYMENTS</b>		
Chatsworth Rent	3,486	2,912
Insurance	797	776
Utilities (electricity, tank emptying)	2,101	878
Consumables (cleaning, toiletries, coal)	355	222
Regular Maintenance	50	551
Improvements	3,864	4,567
Travel/ Miscellaneous	63	-
<b>TOTAL HEATHY LEA PAYMENTS</b>	<b>10,716</b>	<b>9,906</b>
<b>TOTAL PAYMENTS</b>	<b>29,317</b>	<b>27,680</b>
<b>EXCESS OF RECEIPTS OVER PAYMENTS/(PAYMENTS OVER RECEIPTS)</b>	<b>(2,414)</b>	<b>(1,918)</b>

**Oread Mountaineering Club**  
**Statement of Assets and Liabilities at 31<sup>st</sup> December 2019**

	2019 £	2018 £
<b>Fixed Assets:</b>		
Freehold property	250,000	250,000
<b>Current assets:</b>		
Bank balance	30,275	32,692
Heathy Lea float balance	<u>45</u>	<u>42</u>
	<u>280,320</u>	<u>282,734</u>
Reserves brought forward	282,734	284,652
Surplus/ (deficit)	<u>(2,414)</u>	<u>(1,918)</u>
	<u>280,320</u>	<u>282,734</u>

**Notes to the accounts:**

- 1) These accounts are prepared on a receipts and payments basis and do not include any amounts owing to, or by, the club at 31<sup>st</sup> December 2019.

The Club had the following liabilities at that date:

	2019 £	2018 £
Subscriptions received in advance	2,846	2,724
Solicitors fees re lease renewal	-	966
Hut fees received in advance	750	1,430
Income received in advance re meets	232	760
Additional rent due re Heathy Lea	-	328
Accountants fees	360	360

The Club had prepaid £399 for huts re 2019 meets (2018 – £1,452).

- 2) The freehold property at Tan yr Wyddfa is included at market value 2015.
- 3) Leasehold property fixtures, fittings and equipment are written off in the year of purchase.

The above Statement of Assets and Liabilities and attached Receipts and Payments account were approved by the Committee on 18 February 2019 and signed on their behalf by:

J Briggs  
Treasurer

*J.A. Briggs*

D Helliwell  
President

Page 3

*D Helliwell*

## BUDGET for 2020

A balanced budget for 2020, shown with receipts and payments for 2019, and the 2019 budget, is shown below:

	2019 TOTAL	2019 Budget	2020 Budget
<b>GENERAL INCOME</b>			
Subs	£ 6,244	£ 6,100	£ 7,500
Indoor Meets / Dinner	£ 2,868	£ 2,000	£ 3,000
Outdoor Meets	£ 1,097	£ 2,500	£ 2,500
Training Courses		£ 1,000	£ 500
<b>GENERAL INCOME TOTAL</b>	<b>£ 10,441</b>	<b>£ 11,600</b>	<b>£ 13,500</b>
<b>HUT INCOME</b>			
TYW	£ 11,029	£ 8,750	£ 9,500
HL	£ 5,033	£ 5,000	£ 5,500
Donations	£ 632		
<b>INCOME TOTAL</b>	<b>£ 26,902</b>	<b>£ 25,350</b>	<b>£ 28,500</b>
<b>GENERAL EXPENSES</b>			
BMC	£ 2,950	£ 3,000	£ 4,000
Bank	£ -	£ 100	
Printing / Postage / Stationary	£ 968	£ 1,000	£ 1,000
Web Site	£ 152	£ 160	£ 160
Indoor Meets / Dinner	£ 3,389	£ 2,200	£ 3,000
Outdoor Meets	£ 982	£ 3,000	£ 3,000
Training Courses	£ -	£ 1,000	£ 1,000
Solicitors / inspection of accounts	£ 1,560	£ 900	£ 500
Donations	£ 60		
Travel Expenses	£ -	£ 50	£ 50
<b>GENERAL EXPENSES TOTAL</b>	<b>£ 10,061</b>	<b>£ 11,410</b>	<b>£ 12,710</b>
<b>TYW EXPENSES</b>			
Insurance	£ 1,195	£ 1,200	£ 1,250
Utilities	£ 3,681	£ 3,500	£ 3,800
Consumables	£ 225	£ 350	£ 350
Regular Maintenance	£ 267	£ 2,500	£ 2,500
Improvements / Replacements	£ 2,918		
PAT / Fire / Gas Tests	£ 253	£ 150	£ 200
Travel/ Misc	£ -	£ 100	£ 100
<b>TYW EXPENSES TOTAL</b>	<b>£ 8,540</b>	<b>£ 7,800</b>	<b>£ 8,200</b>
<b>HL EXPENSES</b>			
Chatsworth Rent	£ 3,486	£ 3,240	£ 3,240
Insurance	£ 797	£ 800	£ 850
Utilities	£ 2,101	£ 1,200	£ 2,400
Consumables	£ 355	£ 200	£ 400
Regular Maintenance	£ 50	£ 400	£ 400
Improvements	£ 3,864		
PAT / Fire Tests, Chatsworth Survey	£ -	£ 200	£ 200
Travel / Misc	£ 63	£ 100	£ 100
<b>HL EXPENSES TOTAL</b>	<b>£ 10,716</b>	<b>£ 6,140</b>	<b>£ 7,590</b>
<b>Income</b>	<b>£ 26,902</b>	<b>£ 25,350</b>	<b>£ 28,500</b>
<b>Expenditure</b>	<b>£ 29,317</b>	<b>£ 25,350</b>	<b>£ 28,500</b>
<b>Income - Expenditure</b>	<b>-£ 2,415</b>	<b>£ -</b>	<b>£ -</b>

Points to note are as follows:

1. Income from subscriptions and fees to the BMC are budgeted to increase in 2020 due to the increase in BMC fees and consequent increase in our subscription rates.
2. The budget for utilities at Heathy Lea has been increased for 2020 to cover the cost of running more storage heaters.

3. For Tan yr Wyddfa the total of Regular Maintenance and Improvements / Replacements is based on 1% of its value, as recommended by FTG. Any unspent amount will be carried forward to future years.
4. The budget shows a contingency of £500 to allow for loss making meets. It is considered by the committee that as the running of outdoor meets is the main function of the club we should be able to book huts in the knowledge that there may be occasions when the hut is not filled to capacity and therefore a loss will be made.
5. The budget shows a contingency of £500 for training. Members are invited to apply for this to fund or subsidise any mountaineering based training they wish to undertake.

Janet Briggs  
January 2020.

### Addition to Oread Treasurer's Report 2020 – The effect of Hut Closure on the Club's Finances

The treasurer's report being presented to the AGM shows a balanced budget for the year 2020. However, the closure of the huts due to Coronavirus means that this will not now be possible.

I have made an estimate of the likely effect:

Average combined monthly income from Heathy Lea and Tan yr Wyddfa:	£1300
Possible combined monthly savings on costs* through lack of use:	£300

Thus, the likely loss over the period of closure is £1000 per month.

It is not an ideal situation; however, the club has, over the years, built up reserves as a contingency fund. This is probably not the sort of contingency most of us imagined however we are in a strong position to come through it without long term damage.

If hut closure continues beyond 2 or 3 months we can see if we can make further savings on costs, e.g. by seeing if there is any scope to reduce HL rent, or water and waste disposal payments for TyW. We will constantly review the situation so as not to put the club into a difficult financial position.

As far as existing booking go, we are offering either a refund of deposit, or the option to rebook once the huts are available once more. We wish to maintain goodwill with other clubs and groups.

\* Estimate of savings on costs through lack of use are based on the following:

- We will not be using coal in both huts, nor other consumables such as washing up liquid, and toilet paper (no raiding of the supplies please!).
- The sewage holding tank at Heathy Lea will not need emptying so frequently.
- We can save some electricity at both huts, because of not using hot water, lighting and cooking, and by turning down storage heaters, but at Tan yr Wyddfa not to such an extent as to risk damage to the fabric of the property.

Janet Briggs 19<sup>th</sup> March 2020.

## **Tan yr Wyddfa Report.**

With great sadness, on the eve of a really good weekend's weather, I've just come back from the hut having prepared it for a shut down of unknown length. The bedroom doors are held open to ensure good air circulation. The fridges are switched off and doors left open. The storage heaters have been left on at a low level. The grass has been cut. Be assured I will be checking on it during the closure providing I'm not forbidden to travel or shot as a danger to society.

At present all is in good order, the fire and electrical equipment testing has been done for the year. All is satisfactory. We had a very productive working party last July when the garden was thoroughly tamed and lots of outdoor painting was done. We have an excellent new storage heater on the landing and a fine new stair carpet has just been fitted. Shame nobody can see it just now. I took photos for you – see page 22.

Finally a big thank you to Tony Howard for his many years service on the Hut Committee and a warm welcome to Derek Pike and Dave Appleby who have volunteered to join us.

Dave "Snod" Helliwell 23 March 2020

## **Heathy Lea Report.**

Work has continued to complete all the planned changes from the improvement plan and recommendations from Chatsworth electrical inspection.

The most significant change is that Heathy Lea now has an inside toilet. We also have some very smart plaques denoting the club logo thanks to Derek Pike.

The problem of the attached Severn Trent building remains unresolved, however Chatsworth efficiently resolved a major problem for us when fly tippers blocked the driveway just before a meet.

Ben Wooler has embarked on a programme of social events based at Heathy Lea and as a result of the improvements we have received a great number of positive comments on comfort and facilities.

As outgoing custodians we would like to thank all of you who have given up your time at work parties and the committee for their continued support which has been very much appreciated.

We hope that the current situation is resolved in time for the club to celebrate the 50th anniversary of the opening of Heathy Lea in October.

Phil and Yvonne Waterson 20 March 2020

## **A message from Nigel Briggs, Oread President from 28 March**

I don't think any one of us would have predicted the situation and challenges we are currently experiencing. For the want of overusing the term it is 'unprecedented', with jaw dropping announcements almost becoming a daily occurrence. These are not the conditions I would have thought I would be taking over as President in, however they are! Thanks to Snod for steering us through the last two years and thanks for all who have contributed in the running of the club.

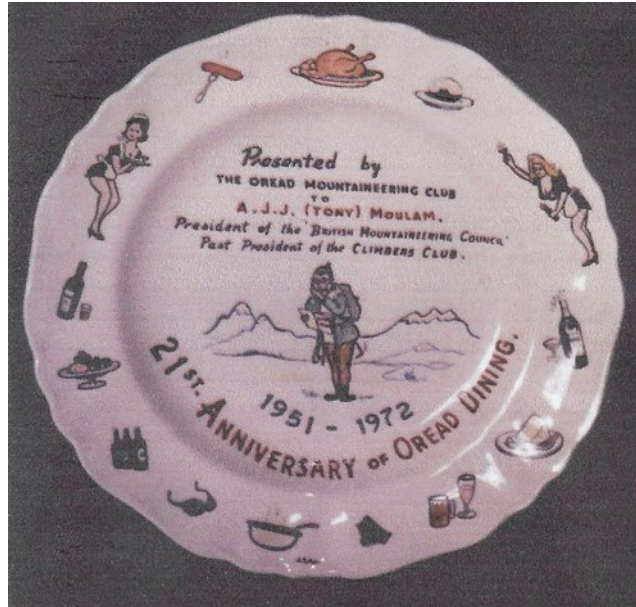
In the forthcoming weeks times are going to be difficult, in the meantime let's look out for each other and look forward to better times.

## Member's Corner

Stuart Firth writes:

**Oread Puzzle – Who made this plate?**

**This plate was presented to an old friend of the Oread - Tony (AJJ) Moulam - at the 21<sup>st</sup> Anniversary Dinner.**



Tony has recently been in touch with me with a photograph of this plate which he values highly. It was given at a time when the Oread dinners were somewhat wilder than they are nowadays and featured drag artists, strippers and other non-PC attributes. Even I can remember when it was prudent to ensure one's underwear was presentable. The peripheral cartoons are all meaningful; for example, I know that at Christmas Tony would eagerly trade his turkey portion for someone else's chipolata sausages.

Rob Tresidder has suggested that the top-heavy waitresses were based on a cartoon character called Betty Boop whose scandalous figure and persona resulted in Hollywood establishing the film rating system known as the Hays Code.

Dave Appleby has kindly established with the Pretty family that although Molly was a ceramicist - as is her daughter Laura - she was not the craftsperson who created the plate.

So, the question remains: who made the plate? I'm hoping that members of the club who were at the dinner may be able to provide an answer.

# News, Articles and Reports from Meets.

## The March Midweek Meander Peter Amour



*We didn't get away with taking on Chrome Hill - arguably the most eye-catching feature of the Peak.*

Sharing transport, John Gwyther and I arrived just about on time at the Cobbles Cafe, Longnor to be quizzed in detail about the route. The interrogator (a runner from Parwich) made it feel like a job interview.

Feeling as though I was on a short term contract I led a north easterly line to cross the River Dove over Beggar's Bridge to then pass through Underhill where a sheep was found to be doing a good impression of a corpse. Sue and John informed the farmer of the situation then joined us in crossing Hitter Hill by the Clive Russell route over to Glutton Dale (who needs footpaths?).

The combination of muddy and steep terrain generated enough wimp factor for us to by-pass the Parkhouse Hill test, but we did tackle Chrome Hill under grey skies where food was eaten on the summit.

Having taken lunch, the meandering ridge was traversed before descending to then tackle the steep ground by Rock Tor. On less demanding ground we took an anti-clockwise arc to arrive at Tenterhill's really characterful packhorse bridge and rendezvoused with Derek who'd avoided Chrome Hill to save his knee some grief.



*Above all difficulties: Rusty, John Gwyther, Sue, Stuart and John Green about to leave Chrome Hill summit.*

At this point we transferred from the Dove valley to the Manifold Way to then use a combination of tarmac and muddy turf to the ancient market place in Longnor. Thanks for the company of John Gwyther, John Green, Stuart Firth, Sue Todd, Derek Pike, and last but not least Rusty for his local drier ground knowledge and banter.

### **Patterdale 6-8 March Pippa Leach**



*Heading towards High Street via Angle Tarn - later driven down to Hayeswater and Brotherswater to miss the stinging hail.*

Even though there wasn't a named storm coming through the weekend of the Patterdale meet, the pattern, or should I say rut, of wet and windy weather did persist. This was more than made up for by the good company shared.



*The Meet Leader, suitably dressed for gusty winds and painful hail showers, gets on with making the best of the day. Photos Pete Amour.*

In truth, the weather didn't stop us getting out and about. Certainly, some plans to go high were aborted, but Aira Force was magnificent, with rivers in spate, others did a walk to Howtown and back, three of us even circumnavigated Ullswater itself, this was not without rewards, with views at low level.

Thank you to those who attended and put up with me leading my first meet!

## Peak District Boundary Walk 13-15 March Stuart Firth

### Marsden to Holme and Holme to Langsett Barn



*The self-declared good-looking members of the party smile for the camera.*

This was our second double stage of the boundary walk with some challenging logistics. We based ourselves at the spectacularly-positioned Whitegate Leisure campsite near Holme with campers, sleepers-in-cars, camper vans and a party self-catering nearby. Holmfirth Taxis did a fantastic job shuffling us to the start, from the finish, to the pub and back and sundry car-recovery missions.

Saturday's walk started from the Month of Sundaes café in Marsden and retraced our steps back to the leat traversing the hillside above the Holme Valley. We could see the site of the historic Bilberry Dam disaster of 1852 that killed 81 people and was witnessed by an ancient relative of mine. The guidebook led us astray into a shooting range but fortunately our losses appeared to be minimal. We continued past multiple reservoirs built to feed the old woollen mills and had fine views towards Castle Hill, Huddersfield and the Emley Moor masts.



P1080766.JPG

Mick & Helen at lunch

Saturday, March 14, 2020

*The fashionistas of the Oread model the new 2020 spring season colours... (Photo: John Green)*



*... whilst Radders takes a Churchillian postprandial nap with the spring chickens still looking energised.*

A few of us celebrated the completion of the official stage by calling in at the pub before completing the day with a hike back up to the campsite. The hospitable Fleece Inn at Holme provided us with an excellent dinner and it was great that our party of fifteen could all eat together and be served simultaneously. The

standard of graffiti in the gents was memorable but unfortunately not repeatable in a journal of such high social mores.

Saturday night was notably wild, wet and windy with vans rocking and rolling and tents flapping noisily. Fortunately, only one vehicle needed the helpful campsite owner's 4x4 to be towed off the waterlogged pitch on Sunday morning.

Our second day seemed colder and we passed through interesting woodland from Heaven (Elysium Farm) to Hell (Hades). Not surprisingly, the weather then warmed up.



*Hades – a fine piece of graphic drystone wall demarcates the official entrance to Hell.*

By our elevenses refreshment stop, we had crossed the watershed and entered the reservoir moorland area associated with Sheffield's outlying steelworks hidden in the valleys to escape Hitler's bombs. There was a slightly dull stretch along a tarmac rail trail but we soon reached Langsett reservoir where we had lunch alongside a trout ladder.



*Pip and Neil are early adopters of the Covid19 self-isolation strategy...*

We had been walking briskly and arrived at our endpoint much earlier than planned. This allowed us to refresh ourselves in the café and pub while we waited for the rescheduled taxis to return us to the campsite. All-in-all another happy weekend walking despite the looming Virus Crisis and plummeting stock markets. Let's hope it'll all feel more settled in September when we hope to resume our PDBW walks. Hope to see you on the other side...

If you want to do a bit of DIY on stages you have missed etc see the website [friendsofthepeak.org](http://friendsofthepeak.org) which has lots of info on the PDBW, downloadable maps and also volunteering opportunities.

### **Some thoughts on this Winter's floods Clive "Rusty" Russell**

In spite of Brexit, the Virus, global warming etc. the seasons continue to evolve. There have been some extremes of wind and rainfall, but the flooding resulting from the latter has been exacerbated by unwise management, flood defences keeping water out of what were formerly flood plains so that it arrives downstream more quickly, and building on the flood plains themselves. A country in which qualified engineers take jobs in banking to move into a different earning league deserves what it gets in respect of civil engineering works of course. I personally prefer to observe nature and refrain from precipitate large scale action until it has been thoroughly vindicated by research.

On 21 Feb it felt bitterly cold as I dined again on Hollins Hill, irrespective of the actual temperature, a clear sky and a brisk wind leads to a low "feel like"

temperature as published in weather reports. The low atmospheric humidity and the air movement however created conditions for evaporation so that the ground surface, except in low places where standing water was present, began the lengthy process of drying out. I observed an enormous water tank, installed to provide for the sheep during preceding dry summers, full to the brim and oozing at the seams. The following weekend on “Dragon’s Back”, the drying seemed to be under way and the temperature was more friendly.



The Daffodils at Parwich are at least three weeks earlier than in some earlier years, and the home flood “defences” i.e. heaving up the slabs over a small culvert to allow cleaning out operations seems to have worked. The rationale was to let the water run faster through the culvert so as to scour out the silt in the bed of the small water course downstream. A further burst of heavy rain a few days ago has slowed the onset of Spring conditions, but the water stayed in its rightful path, on my premises even though it raced down in a spectacular cascade. (A moorhen seems to approve and has settled nearby). On a larger scale, I have generally been of the opinion that the River Dove flows better than the Manifold, possibly because of a more

stony bed, but the earlier extreme flows appear to have scoured out the Manifold, and last Sunday the reverse situation seemed to have been the case, the Dove the appearing more full of the two. Some of the water in the Dove may have come from the side valleys such as Biggin Dale which is flat and stony with the ground water normally below the surface where I observed and photographed the water flowing through the stone walls. This is an illustration, in my view, of how water in the absence of human intervention will lie in flat areas, rock fissures and the interstices of certain types of soil in times of flood, and later flow downstream under gravity when rainfall abates. We interfere with these natural processes at our peril.

## **Hut Bookings.**

### **TAN-YR-WYDDFA**

Closed until further notice.

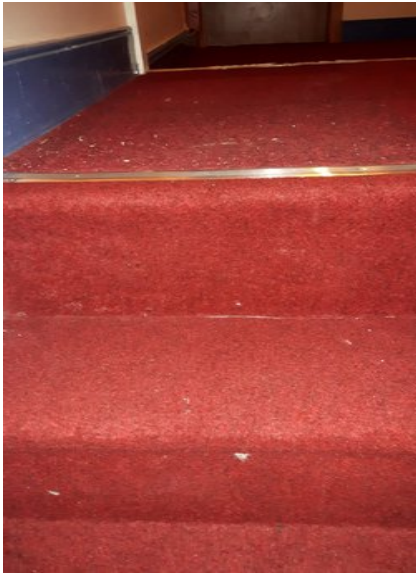
### **HEATHY LEA**

Closed until further notice.

All queries and outstanding payments should be addressed to Michael Hayes, the Hut Bookings Secretary: 179 Starkholmes Rd. Starkholmes, Matlock DE4 5JA

Mobile 07771 700913. Email: [michaelhayes6688@gmail.com](mailto:michaelhayes6688@gmail.com)

## The fine new stair carpet at Tan yr Wyddfa.



*Shame he didn't think to vacuum it before he took the pics!*

## Information on Member Activities

Welcome to new full members Rob Beck, Tim Freeman, Jess Green, John Gwyther, David Hayden, Ashley Kitchen, Louise Pymm, Lucia Revelo Silva, Samantha Shillinglaw and David Uribe. We hope you will enjoy many happy days with the Oread.

Applications for full membership have been received from Rachel Walker, to be decided at the April committee and Pamela Postans, to be decided at the May committee. If you would like to comment on these applications please contact a member of the committee.

## Rusty's Puzzle Corner

### February's puzzle:

**Paul Bingham writes** - Re George Reynolds photo in the February issue:



Indeed it was the rocks below Old John Tower in Bradgate Park, Charnwood Forest. The Monday date is correct as it was one of the 'Monday Walks' not strictly Oread events but a mixture of, mainly, Stapleford Camera Club and their joint Oread members. Gordon Gadsby and Stu Bramwell started going out on Mondays when they retired early/mid 90s. I was the

third recruit in 1996 so I reckon they've been going at least 25 years Among the silhouettes, in addition to Colin Hobday, I can also make out Gordon and Margaret Gadsby, Stuart Bramwell and me.

### **Last month's puzzle solution:**

Name the crag and the climb – five people correctly identified the crag as Wharncliffe and first to reply as usual was Roger Chapman who says: "According to Eric Byne (High Peak) the birthplace of gritstone climbing was Wharncliffe. The rest of the puzzle was harder. There is an illustration on the Internet that suggests the climb may well be Himmelswillen (VS 4c) but I can't find who first led it. Given the context would it be Harry Pretty?"

Hard on his heels was Puzzlemaster Rusty:

"I am reasonably certain that the crag is Wharncliffe, "Harry" is Harry Shillam. Not having a list of first ascents, the name of the climb is more problematical but, guessing the probable standard and trying to match the picture to the route descriptions I will go for October Climb."

The third reply came from Rob Tresidder and was spot on: Scarlett's Climb. First led by Harry Scarlett in 1931, now given Hard Severe 4a it was a mere Severe in the youthful Snod's day with a warning that "From the mantelshelf a tall man can reach the top, for other mortals a difficult intermediate move has to be made."

The puzzle that nobody has yet managed to answer is how he ever managed to climb anything in jeans that tight.

### **This month's puzzle**



Featured in a recent edition of "Derbyshire Life" was a photograph of a stone staircase adjacent to a major Peak District climbing venue. Which crag was the location, and where else in the general neighbourhood, close to a gritstone wall, may another old flight of stone steps be found.

What is the approximate distance between the two staircases.

Additionally, what is the approximate distance and bearing of each from the position from which the accompanying photograph was taken.

*Editor: Ruth Gordon, 4, The Terrace, Upper Lumsdale, Matlock, Derbys. DE4 5LB  
Tel. 01629 56636 07999 857 922. Email [alistair.ruth@btinternet.com](mailto:alistair.ruth@btinternet.com)*