

OREAD MOUNTAINEERING CLUB MAGAZINE

MARCH 2020



**Happy Boundary Walkers playing with the Pots and Pans, Chew Valley.
photo – Peter Amour.**

Editorial

As the wild wind still blows and the rain hammers down the last Peak Boundary walk escaped all the dire weather prophecies and a memorable weekend of stunning high level scenery rewarded all who took part. Let's hope the next two stages and the forthcoming Patterdale and Tan yr Wyddfa meets in March will be equally blessed. It will be Spring soon – honest – Spring Stride, new members meet and Easter in Pembroke coming up in April.

The AGM is coming up soon – at an emergency new venue, The Miners' Standard, Winster, due to the Robin Hood being closed at present.

Back home the club urgently needs a few new folk to get involved in making it all happen, **a new Heathy Lea Hut Custodian is essential** – your club needs you! Please read the important notice on page 2 – oh! and don't forget to pay your subs! 49 of you have still not got round to it!

The Oread Needs You!

The Club urgently needs a volunteer to be **Heathy Lea Hut Custodian**. The Club cannot function without someone to take on this essential role at the 28 March AGM. Please think seriously whether you could do this, or part of it - perhaps share this role with a friend?

It is an organisational role rather than someone who has to do all the work as there is a Hut Committee to share the practical work, DIY etc and several people who regularly help with hut checks.

Forthcoming meets 2019 – 2020

The meets programme for the coming year is given here though regular mid-week walking and climbing meets are not included beyond May 2020.

Changes from last month are printed red.

Nigel Briggs. Email for Meets Secretary remains oreadmcmets@gmail.com

<i>March</i>	3	<i>Evening Lecture Royal Oak</i>
	4	<i>Wednesday Walk Longnor</i>
	6 th -8	<i>Patterdale George Starkey hut Pippa Leach</i>
	14 -15	<i>PDBW 2 stages camping</i>
	20 th - 22	<i>Tan yr Wyddfa Neil Weatherstone</i>
	28	<i>AGM Change of venue – Miners Standard Winstar</i>
	29	<i>Spring Stride Nigel Briggs</i>
<i>April</i>	1	<i>Wednesday walk Youlgreave + first outdoor evening climbing.</i>
	10 th - 13	<i>Easter Pembroke camping St Petrox Pam Storer</i>
	24 -26	<i>New Members' meet Heathy Lea Ben Wooler</i>
<i>May</i>	6	<i>Wednesday Walk Millers Dale</i>
	8 th - 10	<i>Bank Holiday on 8th. Dartmoor camping Ben Wooler</i>
	15-16	<i>Ogwen Glan Dena Charlie Taylor</i>
	23 rd -31	<i>Bank Holiday week. Kinlochewe Torridon camping Spenser Gray</i>
<i>June</i>	6 th -7	<i>Heathy Lea Children's meet Neil Weatherstone</i>
	6 th - 7	<i>High Moss Duddon Valley Spenser Gray</i>
	20-21	<i>Heathy Lea Working Party</i>
	26-28	<i>Bivvy meet Pete Amour</i>
<i>July</i>	7 th -9	<i>Tan yr Wyddfa working party Dave Helliwell</i>
	10 th -12	<i>Tan yr Wyddfa barbecue meet Tony Howard</i>
	25 -8 August	<i>Alpine meet/Lofoten Derek Pike</i>
<i>August</i>	1 st - 8	<i>Alpine meet</i>
	14- 16	<i>Wye Valley camping meet leader needed</i>
	28-31	<i>Bank Holiday weekend meet leader needed</i>
<i>September</i>	11 th - 13	<i>Yorkshire Grit Manor House Farm camping meet leader needed</i>
	20	<i>PDBW Pippa Leach</i>
	25- 27	<i>Little Langdale Fylde Hut Dave "Snod" Helliwell</i>
<i>October</i>	6	<i>Evening meet Royal Oak</i>
	10	<i>PDBW John Gwyther and 50th anniversary of Heathy Lea celebration</i>

	16th- 18	Cwm Eigeau Janet Briggs
	30-31	Patterdale Beethan Cottage <i>Mike Moss</i>
November	3	Evening meet Royal Oak
	7	Bonfire meet Heathy Lea
	8	PDBW Chris Radcliffe
	21	Annual Dinner <i>C & G Radcliffe</i>
	22	Post Prandial walk
	27 th -29	Curry Meet High House Borrowdale <i>meet leader needed</i>
	December	1
6		PDBW Paul Gardiner
9		Black Rocks/Harborough night climbing
11-13th		Bullstones
24-31		Christmas and New Year at Tan yr Wyddfa

Evening meets:

Do come along to the evening climbing wall session:

Mondays at the Unit from 7 – 9.00 pm and after at the Smithfield, Meadow Road, Derby. Over the winter there is also a group at Wirksworth wall from 7-9.30 pm on Wednesdays, then adjourning to the Royal Oak, North St.

Tuesday 3 March 8pm Lecture Royal Oak Ockbrook



Peter Foster, the author of a new biography of Thomas Graham Brown FRS (1882-1965), will deliver his lecture **The Uncrowned King of Mont Blanc**. TGB was arguably the foremost British alpinist between the wars. He is best remembered for his triptych of new routes on the Brenva face of Mont Blanc and his feud with his partner, Frank Smythe, which smouldered and flared for twenty years. Ambitious, determined and uncompromising in his views, he never

left others feeling neutral. This lecture will tell the story of Graham Brown's turbulent life and climbs.

Rob Tresidder text 07951 625378

4 March Wednesday Walk

Meet 10.00 am at Cobbles Cafe, Longnor marketplace for a 10.30 departure.

6-8 March Patterdale Pippa Leach

The Patterdale meet has been a very popular meet with Oreads over the years, a superb area, highly accessible, with the iconic Striding Edge and Swirral Edge routes up Helvellyn, as just one example of what's on offer. It's a Mecca for walkers, fell runners and mountain bikers alike. In the past, we have experienced snow on the fells (necessitating ice axes to be safe!) but also torrential rain, March weather can be unpredictable, so no guarantees there. The George Starkey Hut has excellent facilities and is warm and cosy, especially once the fire is lit. Stuart Haywood is unavailable to lead the meet this year, so I have offered to step in. Please contact me if you wish to go, with any additional information, such as, whether you are able to offer lifts to others, when you expect to arrive and whether you wish to bring any guests. In the past, it has been possible to stay extra nights, if you are wanting to do this, let me know, and I will inform the hut secretary. Finally, if you are planning on using your own van/ motor home, please inform me of this too, as it will free up bed spaces for others.

Pippa Leach. Email pippasleach@gmail.com Tel. 07941 395856

10 March Pavilion Arts Centre, Buxton

7.30 pm. An evening with Martin Boysen, who will be interviewed by Ed Douglas. More info and tickets via www.buxtonoperahouse.org.uk

13-15 March Peak District Boundary Walk Stuart Firth

Saturday – Marsden to Holme: Distance 10 miles (16km); Ascent 500m (1700ft)

Sunday – Holme to Langsett Barn: Distance 9miles (14.5km); Ascent 224m (800ft)

Overnight campsite, self-catering and B&B Accommodation available Friday and Saturday nights (make own direct booking).

In days of old, when knights were bold and ladies still wore nighties, the Oread was generally younger and fitter. But not necessarily wiser. Examination of "Climb if You Will" and the Oread 50th Anniversary Journal reveals that the Club has a long tradition of marathon walks including Marsden to Heathy Lea (according to Jack Ashcroft, first done 24-25 October 1952). There is also a strong corresponding history of shambolic leadership and followership.

I hope by doing a similar walk over six days – spread over four weekends - instead of two, we will be rather more orderly and have just as much fun.

This weekend sees us leaving the northern-most point of the PDBW – Marsden - and starting the north eastern leg back to Heathy Lea. This will be a double stage from Marsden to Holme and then Holme to Langsett Barn. As per the previous PDBW meet, in order to cut down on travel time, accommodation has been identified near Holme – this time camping, campervanning, Bed and Breakfast or self-catering.

There is also the opportunity of visiting a Yorkshire vineyard and winery!

Campsite: Whitegate Leisure, Upper Whitegate Farm, Holmfirth HD9 2TH. Hardstanding for campervans, hook-up for both campervans and tents. Hot showers etc, spectacular views. Campervans £20 per night with electricity, £15 without. Please book directly with the owner (Sue) and mention the Oread and we'll all be located together. The campsite website might indicate that it's shut. In fact it will be open for our weekend. Leave a phone message or email and Sue, the owner, will respond.

Dark Peak OL1 Grid Ref: 128 055. www.whitegateleisure.co.uk; 01484 688080; 07786 707890

Self-catering: At the vineyard, ten minutes' walk from the campsite and includes spa with gym, infra-red sports sauna, Jacuzzi and swim jet pool! Weekend rates between £110 for a double to £225 for an apartment to sleep 8. Please book directly on www.homefirthvineyard.com ; 01484 691861.

Bed and Breakfast: A rather upmarket B and B is Cuddy's Farm, five minutes' walk from the campsite. Lower Whitegate Farm, Whitegate Road, Holmebridge, Holmfirth HD9 2TH. info@coddysfarm.co.uk ; 07714 588822 / 07872 665898. £90 for 1 night two sharing or £170 for two nights.

An interweb search will reveal other more economic B and Bs albeit slightly further away.

The Walks: Saturday's walk will start from "A Month of Sundaes" coffee shop and ice cream parlour at 9 Peel Street, Marsden, HD7 6BR. On street parking is available near the parish church a few minutes' walk away. We may get a taxi minibus from the campsite or use a car shuffle. The official stage finishes in Holme – good pub, the Fleece – but we walk a little further to the campsite. Sunday's walk starts at the campsite and finishes at Langsett Barn where we will have strategically placed a few cars. Bring packed lunches both days.

On Saturday evening, if there is sufficient demand, we could drive to the Fleece for an excellent pub meal. The Fleece, Holme, Holmfirth HD9 2QC. 01484 683449. Alternatively, for those with posh frocks and / or deep pockets, the Winery might be attractive. 01484 691861. Booking advisable for both. Stuart Firth email stuartmirth@btinternet.com tel. 07977 458048

20-22 March Tan yr Wyddfa Early Spring Meet Neil Weatherstone



It will no longer be winter for this meet as spring starts on the 19th of March (vernal equinox), so this will be a very early spring meet. Last year the weather was mild for this meet with good visibility allowing some great views from the summits. As usual there will be plenty of opportunities for walking, climbing, cycling or what ever takes your fancy at our Welsh hut.

Hope to see you there.

I'll be arriving late on the Friday night and my children will be attending with me. If you would like to book a bed please contact me on tel. 07946 825798 or email neil.weatherstone@btinternet.com

28 March Annual General Meeting Miners Standard Winster

Due to the Robin Hood being closed for refurbishment the Annual General Meeting of the Club will take place at 8 pm on Saturday 28 March at the Miners Standard Public House on the B5056 above Winster. There is parking at the pub and an additional public car park on the road out of Winster just before it joins the B5056. The food is good, but you do need to book in advance on 01629 650279. Mention the Oread when booking so you will be seated in the function room rather than the bar. They have a campsite if anyone wants to stay over.

The Minutes of the 2019 AGM were circulated in June 2019. Printed copies will not be sent out again and multiple paper copies will not be available at the meeting. Please bring your own.

The draft agenda, approved accounts and 2020 budget follow below. Please bring paper copies of these if you wish to refer to them on the night.

Oread Mountaineering Club
Annual General Meeting.
Saturday 28th March 2020
8 pm The Miners Standard Public House, Winster

Provisional AGENDA

- Apologies for Absence
- Minutes of the 2019 AGM
- Matters arising from those minutes
- President's Report
- Treasurer's Report
- Tan yr Wyddfa HC report
- Heathy Lea HC report
- Election of officers. The following nominations have been received:
 - President: Nigel Briggs
 - Vice President: Dave Helliwell
 - General Secretary: Simon Pape
 - Membership Secretary: Michael Hayes
 - Treasurer: Janet Briggs
 - Hut Bookings Secretary: Michael Hayes
 - Hut Custodian Heathy Lea: **SITUATION VACANT**
 - Hut Custodian Tan yr Wyddfa: Dave Helliwell
 - Meets Secretary: Michael Moss
 - Communications Officer: Ruth Gordon
 - Additional Committee Members: Pete Lancaster, Chris Wilson, Ben Wooler

 - Heathy Lea Hut Committee: Steve McDonagh, Michael Hayes, Pam Storer, Rob Beck
 - Tan yr Wyddfa Hut Committee: Dave Helliwell, Chris Eyre, Roy Eyre, Tony Howard, Pam Storer, Ruth Gordon.
- Proposed Constitution Amendments
Changes have been proposed to the following three clauses, with the additional text highlighted in red.
 - 7.6 The Treasurer shall be a signatory of the account(s). Additionally the Committee will nominate a minimum of three elected Club members **who are not related to each other** as signatories for the club account(s) of whom at least two shall have access to see all transactions in the Club's bank account(s).
 - 7.8 Any cheques drawn against club funds should hold the signatures of at least two signatories **who are not related to each other**.
 - 11.1 The Club can only be dissolved by a two-thirds majority vote at a General Meeting. Any liabilities at the time of dissolution, if the assets of the Club are not sufficient, shall be the joint responsibility of all Full Members. The Committee will arrange to discharge any remaining assets by donating to Charity or to organisations with similar aims and objectives to the Oread **and approved by a majority vote at a General Meeting**.

Further nominations or motions are very welcome and must be submitted by 7th March.

Simon Pape – General Secretary

All correspondence to be sent to:

Simon Pape, 41 Intake Lane, Cromford, Matlock DE4 3RH email
simon.pape66@gmail.com

OREAD MC

Treasurer's Report to the 2020 AGM

The Receipts and Payments Accounts, and Balance Sheet for the year 2019 are attached.

NOTES:

1. The club returned a deficit in the year of just over £2400, as compared with a deficit of £1900 in 2018. In both years the deficit is accounted for by the improvements to Heathy Lea, as agreed at the SGM in September 2018.
2. If the 2019 capital spend on Heathy Lea (£3864) is excluded from the payments the club returned a surplus of £1450.
3. The predicted spend on Heathy Lea improvements was £10,400. The actual spend in 2018/2019 was £11,100, of which approx. £700 was on sundries such as electrical and plumbing fittings, paint etc. The predicted annual running costs post improvements for Heathy Lea was estimated as £6680, in 2019 the actual cost was £6654. I congratulate those who were involved in putting together the estimated costs for the Heathy Lea report in 2018, they seem to be remarkably accurate.
4. During the year just over £2900 was spent on improvements to Tan yr Wyddfa. This is over the budget of £2500 (1% of value as suggested in the Forward Thinking Group report), however once the underspend in 2018 is carried forward it is within budget for the two year period.
5. Both payments and receipts for Indoor Meets / Dinner were considerably higher than in 2018. This was partly because the dinner was well attended, but more expensive than last year. Also £500 was spent on a new projector for the evening lectures.
6. The cost of utilities at Heathy Lea is considerably higher than in 2018. This is because of increased electricity usage following the fitting of more storage heaters and was predicted in the Heathy Lea report of 2018.
7. In 2019 the club received 3 donations from members amounting to £400 towards the costs of improving the huts, and also donations amounting to £232 in memory of George Sutton following his funeral. May I take the opportunity, on behalf of the club, of thanking those who made donations.
8. The subscription rates have been increased this year, mainly to cover the considerable increase in the levy we pay per member to the BMC. In addition, we have made

adjustments to the membership categories and rates to reflect benefits received.

9. In summary the club's finances are in a healthy state. We are able to provide benefits for members such as the booking of huts for meets; the running of our huts for our members and others in the mountaineering community; and keeping everyone informed through the website and newsletters, whilst maintaining a reasonable level of reserves for contingencies, particularly with respect to Tan yr Wyddfa.

The accounts have been inspected and approved by our Examiner of Accounts: Helen Lane, of Dains Accountants.

I would like to recommend that Helen be appointed as Examiner of Accounts for 2020.

Oread Mountaineering Club

Chartered Accountants' Report to the Members of the Oread Mountaineering Club on the Unaudited Accounts

In accordance with instructions received, we have prepared for your approval the accounts of Oread Mountaineering Club for the year ended 31 December 2019, set out on pages 2 and 3 from the entity's accounting records and from information and explanations you have given to us.

As a practising member firm of the Institute of Chartered Accountants in England and Wales (ICAEW), we are subject to its ethical and other professional requirements which are detailed at icaew.com/members/handbook.

This report is made solely to you, in accordance with the terms of our engagement. Our work has been undertaken solely to prepare for your approval the accounts of Oread Mountaineering Club and state those matters that we have agreed to state to you in this report in accordance with ICAEW Technical Release TECH08/16AAF. To the fullest extent permitted by law, we do not accept or assume responsibility to anyone other than you, for our work or for this report.

You have approved the accounts for the year and acknowledged your responsibility for them and for providing information and explanations necessary for their compilation.

We have not verified the accuracy or completeness of the accounting records or information and explanations you have given to us and we do not, therefore, express any opinion on the accounts.



Dains LLP
Chartered Accountants

18 February 2020
St. John's Court
Wiltell Road
Lichfield
Staffordshire
WS14 9DS

Oread Mountaineering Club
Receipts and Payments Account for the Year Ended 31st December 2019

	2019	2018
	£	£
GENERAL RECEIPTS		
Subscriptions	6,244	6,011
Indoor Meets / Dinner	2,868	2,025
Outdoor Meets	1,097	2,141
Training Courses	-	753
GENERAL RECEIPTS TOTAL	10,209	10,930
HUT RECEIPTS		
Tan Yr Wyddfa – Hut Fees	11,029	8,762
Heathy Lea - Hut Fees	5,033	5,071
Donation	632	999
TOTAL RECEIPTS	26,903	25,762
GENERAL PAYMENTS		
BMC	2,950	2,814
Bank Charges	-	184
Printing / Postage / Stationery	968	1,107
Web Site	152	155
Indoor Meets / Dinner	3,389	1,679
Outdoor Meets	982	2,970
Training Courses	-	750
Solicitors / inspection of accounts	1,560	1,900
Donations	60	200
Travel Expenses	-	29
TOTAL GENERAL PAYMENTS	10,061	11,788
TAN YR WYDDFA PAYMENTS		
Insurance	1,195	1,163
Utilities (elec, water, waste)	3,681	3,210
Consumables (cleaning, toiletries, coal)	226	311
Regular Maintenance, inc. gas tank	267	432
Improvements / Replacements	2,918	692
PAT / Fire / Gas Tests	253	142
Travel/ Miscellaneous	-	36
TOTAL TAN YR WYDDFA PAYMENTS	8,540	5,986
HEATHY LEA PAYMENTS		
Chatsworth Rent	3,486	2,912
Insurance	797	776
Utilities (electricity, tank emptying)	2,101	878
Consumables (cleaning, toiletries, coal)	355	222
Regular Maintenance	50	551
Improvements	3,864	4,567
Travel/ Miscellaneous	63	-
TOTAL HEATHY LEA PAYMENTS	10,716	9,906
TOTAL PAYMENTS	29,317	27,680
EXCESS OF RECEIPTS OVER PAYMENTS/(PAYMENTS OVER RECEIPTS)	(2,414)	(1,918)

Oread Mountaineering Club
Statement of Assets and Liabilities at 31st December 2019

	2019	2018
	£	£
Fixed Assets:		
Freehold property	250,000	250,000
Current assets:		
Bank balance	30,275	32,692
Heathy Lea float balance	<u>45</u>	<u>42</u>
	<u>280,320</u>	<u>282,734</u>
Reserves brought forward	282,734	284,652
Surplus/ (deficit)	<u>(2,414)</u>	<u>(1,918)</u>
	<u>280,320</u>	<u>282,734</u>

Notes to the accounts:

- 1) These accounts are prepared on a receipts and payments basis and do not include any amounts owing to, or by, the club at 31st December 2019.

The Club had the following liabilities at that date:

	2019	2018
	£	£
Subscriptions received in advance	2,846	2,724
Solicitors fees re lease renewal	-	966
Hut fees received in advance	750	1,430
Income received in advance re meets	232	760
Additional rent due re Heathy Lea	-	328
Accountants fees	360	360

The Club had prepaid £399 for huts re 2019 meets (2018 – £1,452).

- 2) The freehold property at Tan yr Wyddfa is included at market value 2015.
- 3) Leasehold property fixtures, fittings and equipment are written off in the year of purchase.

The above Statement of Assets and Liabilities and attached Receipts and Payments account were approved by the Committee on 18 February 2019 and signed on their behalf by:

J Briggs
Treasurer

J.A. Briggs

D Helliwell
President

Page 3

D. Helliwell

BUDGET for 2020

A balanced budget for 2020, shown with receipts and payments for 2019, and the 2019 budget, is shown below:

	2019 TOTAL	2019 Budget	2020 Budget
GENERAL INCOME			
Subs	£ 6,244	£ 6,100	£ 7,500
Indoor Meets / Dinner	£ 2,868	£ 2,000	£ 3,000
Outdoor Meets	£ 1,097	£ 2,500	£ 2,500
Training Courses		£ 1,000	£ 500
GENERAL INCOME TOTAL	£ 10,441	£ 11,600	£ 13,500
HUT INCOME			
TYW	£ 11,029	£ 8,750	£ 9,500
HL	£ 5,033	£ 5,000	£ 5,500
Donations	£ 632		
INCOME TOTAL	£ 26,902	£ 25,350	£ 28,500
GENERAL EXPENSES			
BMC	£ 2,950	£ 3,000	£ 4,000
Bank	£ -	£ 100	
Printing / Postage / Stationary	£ 968	£ 1,000	£ 1,000
Web Site	£ 152	£ 160	£ 160
Indoor Meets / Dinner	£ 3,389	£ 2,200	£ 3,000
Outdoor Meets	£ 982	£ 3,000	£ 3,000
Training Courses	£ -	£ 1,000	£ 1,000
Solicitors / inspection of accounts	£ 1,560	£ 900	£ 500
Donations	£ 60		
Travel Expenses	£ -	£ 50	£ 50
GENERAL EXPENSES TOTAL	£ 10,061	£ 11,410	£ 12,710
TYW EXPENSES			
Insurance	£ 1,195	£ 1,200	£ 1,250
Utilities	£ 3,681	£ 3,500	£ 3,800
Consumables	£ 225	£ 350	£ 350
Regular Maintenance	£ 267	£ 2,500	£ 2,500
Improvements / Replacements	£ 2,918		
PAT / Fire / Gas Tests	£ 253	£ 150	£ 200
Travel/ Misc	£ -	£ 100	£ 100
TYW EXPENSES TOTAL	£ 8,540	£ 7,800	£ 8,200
HL EXPENSES			
Chatsworth Rent	£ 3,486	£ 3,240	£ 3,240
Insurance	£ 797	£ 800	£ 850
Utilities	£ 2,101	£ 1,200	£ 2,400
Consumables	£ 355	£ 200	£ 400
Regular Maintenance	£ 50	£ 400	£ 400
Improvements	£ 3,864		
PAT / Fire Tests, Chatsworth Survey	£ -	£ 200	£ 200
Travel / Misc	£ 63	£ 100	£ 100
HL EXPENSES TOTAL	£ 10,716	£ 6,140	£ 7,590
Income	£ 26,902	£ 25,350	£ 28,500
Expenditure	£ 29,317	£ 25,350	£ 28,500
Income - Expenditure	-£ 2,415	£ -	£ -

Points to note are as follows:

1. Income from subscriptions and fees to the BMC are budgeted to increase in 2020 due to the increase in BMC fees and consequent increase in our subscription rates.
2. The budget for utilities at Heathy Lea has been increased for 2020 to cover the cost of running more storage heaters.

3. For Tan yr Wyddfa the total of Regular Maintenance and Improvements / Replacements is based on 1% of its value, as recommended by FTG. Any unspent amount will be carried forward to future years.
4. The budget shows a contingency of £500 to allow for loss making meets. It is considered by the committee that as the running of outdoor meets is the main function of the club we should be able to book huts in the knowledge that there may be occasions when the hut is not filled to capacity and therefore a loss will be made.
5. The budget shows a contingency of £500 for training. Members are invited to apply for this to fund or subsidise any mountaineering based training they wish to undertake.

Janet Briggs

January 2020.

29 March Spring Stride Nigel Briggs

This year the Spring Stride takes in the paths around Ecton Hill. Meet at the car park by Weag's Bridge, on the road between Wetton and Grindon (SK100 542) at 10:00 for a 10:30 departure. We will stride following a route through Wetton and over Ecton Hill to arrive for lunch in Warslow before heading back to the Manifold Valley.

The Greyhound in Warslow can provide soup, sandwiches and chips (there is a menu on line if you want further details) and would appreciate some prior notice of numbers. Please could you let me know if you would like soup etc. from them by the 21st March so I can give advance notice. Thanks.

Nigel Briggs: email nigel.briggs@btinternet.com tel. 01283 732925

1 April Wednesday Walk Youlgreave

Meet 10.00 am at Youlgreave Village Hall for a 10.30 departure.

1 April First Wednesday evening climbing meet

As is traditional we will disport ourselves at Harborough before repairing to the Miners Arms, Brassington as darkness falls.

24 -26 April New Members' Meet Heathy Lea Ben Wooler

It has been a long-wet winter with little opportunity for Grit based action but now it is time to dust off your ropes with our annual new members meet! The

club is once again running the meet over the weekend of the 24-26th April following on previous years' successes.

The format of the meet remains unchanged with a small group likely out climbing on the Friday evening then retiring to the hut/pub. On the Saturday morning we will head out to a local crag to be confirmed nearer the time but probably Stanage popular.



Adhe and Lance tackling the Unconquerables last year with impressive outfits to match the occasion.

Saturday evening will include a hearty meal provided by the club. Chef still to be decided and if no one volunteers it'll be the meet leader, but any budding caterers are encouraged and will be rewarded with a beer or two. **Please ensure you inform Ben in good time if you are attending the meal and of any dietary requirements.**

Sunday will once again see us out at the local crags before heading home when enthusiasm or daylight fails.

The cost of the two nights in the hut plus Saturday's evening meal will be £10 payable on the weekend. Please come along and support your club, even if just a few hours out on the crag one day. These meets have brought many new members to the club over the last few years and offer the perfect chance to showcase our much-loved Heathy Lea.

Please contact benjaminwooler@gmail.com if you wish to attend.

6 May Wednesday Walk Millers Dale

Meet 10.00 am at the Millers Dale car park for a 10.30 departure.

Lofoten July 2020 Derek Pike

Since the last note to go out there have been some positive signs, at least two parties in campervans are definitely going around the second half of July, with two others intending to go in their vans, these are parties where time is not an issue. Anyone intending to fly, we have two members interested, will have to camp [note weather can be variable] or, a better option, book some accommodation. **This will need to be booked, the sooner the better.** For those who fly there is a weight limit of 15kg. so I am prepared to carry out some of the heavier climbing gear; another option is by rail. As this is a trad climbing venue with long multi pitch routes you may need a lot of gear; details can be found in the Rockfax guide to the islands. There is also some bolt clipping I believe and some nice little peaks to walk up apart from the beautiful scenery. **If you are interested please contact me at derepike1234@btinternet.com or 07876 238312**

Copy deadline for next issue is 23 March.

Member's Corner

Ruth Gordon writes:

A friend has drawn my attention to this article on the painful topic of belaying accidents. It is worth a read – particularly for those climbing at indoor walls.

Paul Sagar explores why climbing accidents - specifically ground falls - are rarely discussed openly...

The bond between a climber and a belayer is sacred. After all, the climber is placing their life into the other person's hands. But what happens if that bond gets broken, and the climber is dropped in a serious fall?

https://www.ukclimbing.com/forums/ukc/decking_out_battling_complacency_and_taboo_in_climbing_culture-714983

News, Articles and Reports from Meets.

Peak District Boundary Walk 13-15 February 2020 Old Glossop to Greenfield and Greenfield to Marsden.



Having survived the horrors of Storm Ciara, the cast and crew of the Magic Roundabout brace themselves for the onset of Storm Dennis.

Boy were we lucky! During the week prior to the meet, I began to develop a full alphabet of alternative plans. The weather forecast was dire; the bunkhouse had been cold on the original recce; a third of the attendees were new to the club; the routes were the highest, longest and most exposed sections of the PDBW. What could possibly go wrong? Quite a lot actually!

In the event, we had a brilliant weekend. While the rest of the country appeared to be battered and flooded by Storm Dennis, we seemed to have the wind on our backs for the whole walk. There was a little rain on Saturday but none at all on Sunday - until it was time to drive home. Indeed, we actually got some sunshine and the gods were clearly smiling on us.

The walks themselves were fantastic with tremendous views connecting wild moorlands, hard upland farming and an industrial heritage landscape of

impressive dams and reservoirs and textile mills. There were the paddy fields of Padfield (who knew?), the entertaining outcrops of the “Pots and Pans” and a few bizarre discoveries. Namely: a mystery inverted wine bottle carefully bracketed twelve feet up a telegraph pole; a 99% dead crow with a freshly laid blue egg under its tailfeathers; and an armless statue in the middle of nowhere.



The Team at Dovestones Reservoir

Radders proved that his wellies leaked by paddling in the Flintstones Jacuzzi on top of the Tor and Tom broke the world record for cake-eating. It took longer to buy the train tickets from the non-intuitive machine than it did to complete the return train journey. The Donkeystone Tardis microbrewery on an industrial estate in Greenfield was a fine discovery – as was the beer. A new addition to the SI metric system and Oread lexicon was initiated: “Walking at the speed of Pip”.

There was some great teamwork – provisioning, transport and clearing up – so, many thanks to the cast and crew for that. Thanks also to Spenser for suggesting the bunkhouse in the first place - this really enabled the whole weekend to work well. And I can save Plans B-Z for a future occasion...



Heading south on the Pennine Way towards Redbrook Reservoir. Photo Peter Amour.

Ice climbing in Austria Jeff Ingman



Back in January Pete Lancaster, Tim Sellears and Jeff Ingman visited the Austrian Tirol in the hope of finding some climbable ice. Though conditions were not ideal, there was enough ice around to keep the lads busy for the six days. This involved trips into both the Pitztal and Otztal valleys just south of Innsbruck, an area that some Oread's visited the previous summer on Spenser's Alpine meet. A spell of warm weather at the end of 2019 had damaged many of the ice climbs so we had to hunt around to get the best conditions. The ice climbing potential in this part of Austria is massive if you get the right weather, we will return!



FRCC Brackenclose Rebuilding Appeal.

The Oread has been approached, as a club with Reciprocal Rights, by Hatty Harris, the President of the FRCC, asking for donations towards the rebuilding of the Brackenclose hut in Wasdale which was severely damaged by fire in April last year. The plan is to rebuild the damaged rooms unchanged externally but brought up to modern standards of safety, insulation etc. In addition to the insurance money and £50,000 from FRCC reserves they need to raise at least £100,000.

The Oread committee has made a donation of £500 on behalf of the Club. Should you wish to make a personal donation you can do so online to Fell & Rock Climbing Club Brackenclose, Unity Trust Bank, Sort Code 60 83 01 Account 20416098. Or by cheque payable to Fell & Rock Climbing Club Ltd posted to Chris Wales, 57 Fieldhead Drive, Guiseley, Leeds LS20 8DX.

Ensure you give your full name as a reference so your donation can be acknowledged.

Hut Bookings.

TAN-YR-WYDDFA

20-22 March	Oread MC
25-30 March	George Lewis
9-12 April	Scunthorpe MC 10 beds
24-25 April	North Kingston Hillwalking club
8 May	Peter Harris 2 beds

HEATHY LEA

6-8 March	Durham University cottage and barn
20-22 March	Wayfarers cottage
27-28 March	Bowline MC cottage
24-26 April	Oread Meet
22-24 May	Vivian cottage and barn

“Whole Hut” includes the Oread room!

“Sole use – children present” means you may not stay overnight, even in the Oread room.

All queries, payments and bookings should be addressed to Michael Hayes, the Hut Bookings Secretary: 179 Starkholmes Rd. Starkholmes, Matlock DE4 5JA Mobile 07771 700913. Email: michaelhayes6688@gmail.com

Our preferred method of payment is via bank transfer to our account with Lloyds - Sort Code **30-98-97**. Account number **62584068**. You must put your name **and either TYW or HL as a reference**. Otherwise the treasurer cannot allocate the payment to the right hut.

Please follow up with an email to Michael to let him know that you have made a payment and what it was for.

Alternatively you can post a cheque, payable to Oread MC, to the above address.

Information on Member Activities

Welcome to new provisional member Christabel Goode. We hope you will enjoy many happy days with the Oread.

An application for full membership has been received from Samantha Shillinglaw and the following provisional members have applied for full membership: Rob Beck, Tim Freeman, Jess Green, John Gwyther, David Hayden, Ashley Kitchen, Louise Pymm, Lucia Revelo Silva and David Uribe. If you would like to comment on these applications which will be decided at the March committee meeting please contact a member of the committee. An application has more recently been received from Rachel Walker, to be decided at the April committee.

Pete Scott has recently damaged his shoulder in a fall and Colin Hobday, we have heard today, 24 February, is currently in hospital. We all wish you both a speedy recovery and return to good health and activity.

Molly Pretty: a tribute from Judith Appleby



*Molly in Winter 1985
photographed by Harry
Pretty. This photograph, and
the one below, are taken from
the collection of Harry Pretty's
slides recently donated to the
Oread by Laura Burnett.*

Molly was a very dear friend to me, my second mother and mentor. I loved her dearly and will miss her very much.

We had, I believe, a very close relationship and enjoyed many laughs and giggles together, far too many to mention. We confided with each other right from the start, when I first met her when I came to Derby in 1964.

A lovely friendship developed and David and I spent holidays together with the Pretty's and our families.

One holiday in Dumfries and Galloway before Elizabeth was born was spent camping, Simon Pretty had his own tent, which was fortunate for him as not

long after pitching, Molly and Harry's ITSA tent was stripped to its frame by an offshore wind. The tent was many years old!! They moved in with us, a bit like sardines in a tin. The next morning we had a ceremonial burial of the beloved ITSA on the beach. Tears were shed. They had purchased it in 1956.

One meeting, fairly soon after my introduction to the club and Molly, was the legendary party after the Oread dinner. Some folk returned to the Pretty's home for more food and drink. Molly was an excellent cook and always did us proud. I was privileged to be given a bed in Harry's study, everyone else slept where they could.

This was my introduction to Dick Brown (R. A. Brown). He visited everyone, dishing out toilet paper from Simon's school satchel, dressed in his always worn US 5th Cavalry hat and just his underpants. I was terrified!. I had never met anything like him before. Molly came to see me the next morning to see how I had coped. Kind and thoughtful. The trouble the next morning was that no one could use the toilet paper as the toilet was blocked and every one had to retreat to Belper. Following this Molly produced her super breakfast.

We all spent much time at the Welsh hut walking, exploring and climbing. I didn't realise until much later that Molly, and Harry were not particularly fond of Tan Yr Wydffa.

She loved choral music and I remember on one occasion in particular enjoying a John Williams concert together in Nottingham. She was also very interested in historical information and this was evident to me, when we visited a superb and ancient monastery in the White Mountains of Crete. Other cultural visits were enjoyed with many others including Peter and Barbara Janes to Prague and the Tatra Mountains. They also visited Russia and Greece, with many other Oread members.

When Elizabeth arrived on the scene Molly and Harry were the first, apart from David, to hold and cuddle her. A special relationship developed and they became surrogate Grandparents to both Elizabeth and Sarah. The girls were allowed to go to Molly's parties and they remember being put to bed by Molly, until it was time to go home. Small but special memories along with the geranium cuttings that Molly cultivated and the phone call to go and pick plums from their ancient tree in the garden.

Molly had a naughty sense of humour too. On arriving back from New Zealand David stayed with them. David brought back a particularly strong influenza virus with him. The Hong Kong Virus. Molly was soon affected. Harry left for work leaving them head to toe on the bed settee in the lounge feeling very poorly. On return he said "and what have you two been up to all day?" Molly replied "Lots and lots Harry, you wouldn't believe it!" With a wry smile and a wink, to David.

Molly was made an Honorary member following Harry's passing away in 2003. She was absolutely delighted by this honour from the club. She was at the

conception of the Oread in 1949 and was a stalwart in the organising of the Lyngen and South Georgia expeditions of the 1950s.



Molly walking near Elton in 1986 with Norman and Judy Millward.

We aimed to see each other regularly, particularly after her knee operations. If not, we phoned each other often. Her fun and laughter persisted throughout. She loved to keep up to date with any news and gossip!

We all loved you dearly Molly and will love you always.
So much to say. No more time to say it.
Judith Appleby.

Rusty's Puzzle Corner

January's puzzle.

Snod is refusing to accept the Puzzle Master's solution. He writes:
"Many years ago at school I had a lovely, gentle maths teacher who was such a good teacher we loutish juvenile delinquents never gave him any trouble. Just before our O levels he said 'The next bit of advice I give is the most important information I will ever give you. Make sure you read the question properly. Read each one two or three times.' I applied this to Rusty's last puzzle. There was no mention of Mike H determining his best trajectory. It just asked how far away the lorry was when he crossed the kerb. The question was too clever for its own good!
Of course the answer should be given in Surveyors' units ie 2.72 rods poles or perches!"

Last month's puzzle solution:

George Reynolds' splendid photo fooled everyone.

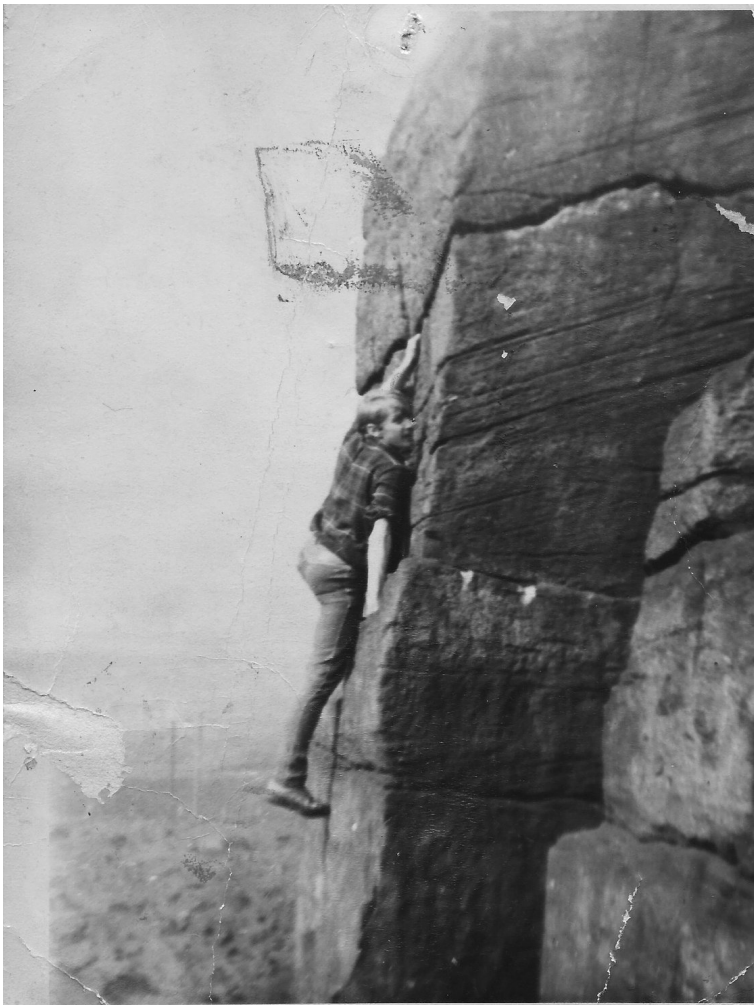
Rusty replied: "Looking at Janet's excellent photograph it seemed to me, although I could be wildly wrong, that the silhouette furthest to the right could be that of Colin Hobday. Also, there is a faint horizontal ribbon of road in the background, could this be the A5 near the end of LLyn Ogwen, if so the rocks might be an outlier somewhere in the region of Little Tryfan."

Jack Ashcroft guessed: "I reckon it was Windgather Rocks. I stayed at the Youth Hostel just below the crag in 1952. I'm not going for any bonus points!"

Snod made about 20 guesses – all wildly wrong.

This was in fact a gallivant into Leicestershire – featuring the crag below the Memorial tower in Bradgate Park. It is dated 19 November 2001 – but oddly that was a Monday? Does anyone remember this esoteric outing? Colin????

The President's Puzzle:



Rusty is taking a rest this month so our Hon. Pres. has provided this photo which shows him in the swinging sixties soloing (for younger members that's bouldering without a mat) a climb on one of his favourite crags, the birthplace of gritstone climbing. He is clad in the then de rigeur climbing outfit of denim jeans and a tartan shirt and sporting a pair of Hawkins Masters zero friction boots on his feet.

Name the crag and the climb - here's a clue – the first ascensionist's Christian name was Harry and he was probably using his mother's washing line.

Membership Renewals for 2020

Following a full review of the membership subscriptions we have made some significant changes to both the cost and the structure as detailed below.


- Although we managed to absorb last year's BMC increase this year we have seen another increase of £6 for every member which we now need to pass on. The committee reviewed the cost v benefits and decided that it was still a very competitive proposal given the benefits of continued BMC membership - The subscription includes the BMC fee of £20.25 giving you all the benefits of individual club membership including the BMC third party insurance.
- We have removed the Joint membership Fee as all our members receive the same benefits and we have to pay the full BMC membership for everyone. With the move away from the posted newsletter there is also no benefit to the Oread from members sharing the same address.

Fees for 2020 are:

- £45 for Full membership
 - £35 for Senior Membership (Past UK State Pension Age)
 - £35 for Provisional membership (First full year only)
- (members paying multiple BMC club memberships can reclaim £20.25 from the BMC)*

How to pay: 1 of 2 ways

- You can pay by bank transfer Sort Code 30-98-97, Account Number 62584068 with (Subs and your name in the reference field). Once the money has been transferred please email michaelhayes6688@gmail.com confirmation and a copy of the form below.
- Please complete the form below and send it with a cheque made payable to the Oread Mountaineering Club, posted to Michael Hayes, 179 Starkholmes Road, Starkholmes, Matlock, Derbyshire DE4 5JA

Oread Mountaineering Club Membership Renewal and Contact List Update		
Name		
Address		
Telephone Number		
Telephone Number Mobile		
Email Address		
Secondary Email Address		
Contact in case of emergency	Name, phone number and address:	
I hereby reapply for membership of the Oread Mountaineering Club, and confirm that I have read the constitution and promise to abide by its rules, respect its properties, and give due respect to the mountain environment	Yes / No	
Data Protection: I agree to my contact details being held by the Oread MC, shared with other paid up members and passed to the BMC to gain my third party insurance	Yes / No	
Participation Statement: I recognise that climbing and mountaineering are activities with a danger of personal injury or death. Participants in these activities should be aware of and accept these risks and be responsible for their own actions	Yes / No	
Signature		
Date		
Membership Type: Please tick relevant box		
Full Member	£45.00	
Senior Member	£35.00	
Provisional Member	£35.00	
Member with permanent address outside the UK. 50% of appropriate rate as BMC membership is not included.	£22.50	

If you have any questions, then please contact me – Michael Hayes 07771 700913

Editor: Ruth Gordon, 4, The Terrace, Upper Lumsdale, Matlock, Derbys. DE4 5LB

Tel. 01629 56636 07999 857 922. Email alistair.ruth@btinternet.com