

OREAD MOUNTAINEERING CLUB MAGAZINE

MARCH 2019



Stunning weather conditions at the Helyg meet. Thanks to Peter Amour for this photograph.

Editorial

Lots of meets coming up: an evening social, our last indoor lecture of the season – fun guaranteed at this one! Scotland in winter, Patterdale, and our own Tan yr Wyddfa. Several local walks, the New Members Meet, spring in the Gower, right through to late summer sunshine in Kalymnos!

Write-ups include Heathy Lea renovations, sparkly ice in the Dolomites and dark bogtales of the Staffordshire Moorlands.

The AGM information is in this issue and more will be sent out in a separate email shortly.

Don't forget: if you want to vote at the AGM you must have paid up your 2019 subs before the meeting so do it right now!

2019 Meets List Spenser Gray

Additions and alterations from last month are highlighted in red.

Spenser Gray email: oreadmcmeeets@gmail.com

Forthcoming meets 2019

<i>March</i>	5	<i>Lecture Royal Oak Rob Tresidder</i>
	6	<i>Wednesday walk Phil Waterson</i>
	8th-14	<i>CIC Scottish meet Spenser Gray</i>
	8th-10	<i>Patterdale meet Stuart Haywood</i>
	15th-17	<i>Waters Cottage Neil Thompson</i>
	17	<i>PDBW Chris and Jan Wilson</i>
	22-24	<i>Tan yr Wyddfa Neil Weatherstone</i>
	30	<i>AGM preceded by 70th Anniversary repeat of first ever Oread meet.</i>
	31	<i>Spring Stride Snod Helliwell</i>
<i>April</i>	5th-7	<i>New Members Meet Ben Wooler</i>
	10	<i>Wednesday walk Rob Tresidder</i>
	19 th -22	<i>Easter</i>
	12th-28	<i>Proposed sun rock trip venue not yet known</i>
	30	<i>Evening social meet</i>
<i>May</i>	3rd-6	<i>May Bank Holiday Gower Mick Hayes</i>
	17th-19-	<i>Tan yr Wyddfa Adhe Koukoui</i>
	24th-2 June	<i>Skye Mike Moss</i>
<i>June</i>	7-9 Jun	<i>Children's meet Neil Weatherstone</i>
	14th-16 Jun	<i>Borrowdale High House - Dave Helliwell</i>
	28th-30 Jun	<i>North York Moors Chris Wilson</i>
<i>July</i>	3rd-5	<i>Tan yr Wyddfa working party Dave Helliwell</i>
	5th-7	<i>Tan yr Wyddfa barbecue meet Tony Howard</i>
	12 th -14	<i>Forest of Bowland Walk Pam Storer</i>
	14th-4 Aug	<i>Alpine meet Oztal Spenser Gray</i>
<i>August</i>	2nd- 3	<i>Tan yr Wyddfa joint FRCC meet</i>
	16th-18	<i>Yorkshire Low Stern Emma Hayes</i>
	23rd-26	<i>Bank Holiday South Pembrokeshire Gill Radcliffe</i>
<i>September</i>	6th -8th	<i>Gogarth Neil Thompson</i>
	21	<i>PDBW Colin Hobday</i>
	27th-29	<i>Clwyd limestone Derek Pike</i>
<i>October</i>	1	<i>Evening Lecture Royal Oak?</i>
	12 th - 20	<i>Kalymnos Michael Hayes</i>
	18th-20	<i>Tan yr Wyddfa Rob Breck and Lucy Grevelo</i>
<i>November</i>	1st-3	<i>Halloween and Bonfire meet Neil Weatherstone</i>
	5	<i>Evening Lecture Royal Oak?</i>
	9	<i>PDBW Rob Tresidder</i>
	16	<i>Annual Dinner Maynard Arms Grindleford. Adam Casey</i>
	17	<i>Post Prandial walk meet leader needed.</i>
	22-24	<i>High House curry meet Tony Howard</i>

	30	<i>PDBW Dave Helliwell</i>
December	3	<i>Evening Lecture Royal Oak</i>
	11	<i>Black Rocks/Harborough night climb Rob Tresidder</i>
	13 th -16	<i>Bullstones Dave Helliwell</i>
	21 Dec-1 Jan	<i>Christmas/New Year at Tan yr Wyddfa Rock Hudson</i>

New Email group to replace Yahoo Group.

It has recently been observed that the Yahoo Group has been failing to deliver messages and causing messages to be delivered out of sequence. The committee has researched alternative options and identified a replacement called groups.io. The functionality offered is very similar to Yahoo Groups, however it is rather more reliable and a bit more obvious how to respond to individuals rather than the whole group.

You will receive an email over the next few weeks which will enable you to join the group, alternatively you can visit this webpage to apply for an invitation to join: <https://groups.io/g/oread>

To send an email to the group, all you need to do is to send an email to oread@groups.io, this can include attachments of photographs, word documents, PDFs and videos etc.

Spenser Gray

Evening meets:

Do come along to the evening climbing wall session:

Mondays at the Unit from 7 – 9.00 pm and after at the Smithfield, Meadow Road, Derby. Over the winter there is also a group at Wirksworth wall from around 7-9.30pm on Wednesdays, then adjourning to the Royal Oak, North St.

Wednesday Walking meets Stuart Firth

A series of Wednesday walks is now underway.

06 March - Phil and Yvonne Waterson – Ashover - more info page 6.

10 April Rob Tresidder venue tba.

We hope to keep this going and link up with the Wednesday climbers when the long evenings permit so we need volunteer leaders for the following dates:

Leaders required for :

15 May - tba

12 June - tba

10 July - tba

14 August - tba

11 September - tba

09 October - tba

Please let me know if you would like to be part of this new venture.

Stuart Firth email stuartmfirth@btinternet.com tel. 07977 458048

26 February Social evening Smithfield Alehouse, Derby Spenser Gray

After the success of December's Social Meet (unfortunately it looks like my phone died before it was able to save the photo) let's do it again! (Oh the hardship of sitting in a warm pub with 10 different real ales on tap, a variety of whiskies and cracking pork pies, it's a real sacrifice I tell you!). Last time people sat round and enjoyed having a couple of beers, chatted about climbing and generally had an enjoyable evening. If you would like to get an idea about what you will be able to do on a particular meet I will be more than happy to bring some guidebooks and discuss the area in question with you. Equally if you would like some help planning a meet I will of course help with this too. See you there 7.30 -10 pm. Spenser Gray Mobile Number 07534 821500

Tuesday 5 March 8pm Lecture Royal Oak Ockbrook

“How to be a better climber!”

Our very own Mike Mowbray “ Mr Motivator” will entertain us in his own inimitable style!

Rob Tresidder email Rob61.Tresidder@virgin.net txt 07951 625378

Wednesday 6 March Day Walk Phil Waterson

The walk will be in the Ashover area, meeting in the community centre car park at 10 00 am for a 10:15 start. (Post code S54 0BA map reference SK 3510-6320 OL24). We will make a magical mystery tour taking in Ravensnest Tor and I promise you a visit to an outstanding pub afterwards.

Phil Waterson tel 07936 712223 email philwaterson165w@gmail.com

Wednesday 6 March Night Navigation Chris Radcliffe

Gill and I have planned a night navigation exercise for the DMC on Wednesday March 6. As usual members of the Oread are invited to join in the fun.

Location: The Gate Inn, Cutthorpe. Grid ref. SK 4324 3733

This will be a score event between 19:00 & 22:00. Penalties apply for any late finishers. An A4 map with the check points marked will be provided.

Chris Radcliffe email chris@farfields.co.uk

8-10 March Patterdale Stuart Haywood

21 beds have been booked at the ABMSAC George Starkey Hut in Patterdale for the nights of Friday 8th and Saturday 9th March, but dependent on weather conditions etc. as usual we have the option of extending our stay.

As this is a long established Oread meet I think everyone will be aware of the possibilities that the location of this hut offers and over recent years climbing, walking, mountain biking, and canoeing have all featured. As we have reciprocal

rights with ABMSAC the cost is £6pp/night.

Over the next few weeks I will endeavour to contact the 'usual suspects' but in the meantime if you want to book a berth please text me on 07774 – 859553 or e-mail stuart.haywood8@yahoo.co.uk I will of course reply to all e-mail and text messages to confirm bookings. Also if you are looking for, or can offer lifts, please let me know.

8-14 March Scottish meet Spenser Gray

The club has a meet at the CIC hut, there are still some spaces on the meet: The cost of the meet will be £20 per night.

Spenser Gray will be travelling up on 8th March and intends to stay at either Riasg or Waters Cottage (both huts where we have reciprocal rights) that evening before heading up to the CIC hut for the Saturday night and returning to Derby on the Sunday evening. Other attendees are expected to head up to the area Sunday Daytime for the full week.

Spenser Gray Mobile Number 07534 821500

Tuesday 12 March Buxton, Pavilion Arts Centre

Simon Yates and Mick Fowler No Easy Way 7.30 pm. For more info and tickets visit www.buxtonoperahouse.org.uk

15-17 March Kinlochleven Waters Cottage Neil Thompson

The club has reserved 12 beds in the hut for the Friday and Saturday nights so there's plenty of room. Cost £12/night pp.

This weekend offers a chance to walk or climb in Glencoe, the Mamores or the Fort William area as all are within easy driving range. For those with more esoteric tastes (Corbetts, Donalds or Grahams etc) the Kinlochleven hut is also handy for visiting Ardgour or Sunart, the Glenfinnan area or perhaps a bracing wander on Rannoch moor for the dedicated madman.

I'll be staying in Scotland all the week following and we have a CIC hut meet in the week before the meet so hopefully some of you might like to come along for a bit of Scottish fun (hopefully type 1 with sunshine, what else?) If you're keen please contact Neil on 07885 637504 ntntansley@hotmail.com

Sunday 17 March Peak District Boundary Walk - Bollington to Whaley Bridge Chris and Jan Wilson

The last stage of this winter's Peak District Boundary Walk saga takes place on Sunday 17 March.

We will assemble at Pool Bank free public car park off Palmerston Street in Bollington at 10.00 for a 10.15 departure. (It sounds early, but we don't want to miss the pub or finish too late.) Grid Ref SJ 9369 7790. Opposite the Spinners Arms pub.

After wandering up Ingersley Road to Sowcar we need to deviate from the official route as a footbridge is in perilous condition and the right of way is closed. Instead we head east along an ancient trade route and a drovers' road before crossing Harrop Brook and rejoining the official way.

Before reaching the lunch time halt at the Miners Arms in Wood Lanes we pass a few interesting buildings, a moor once adorned with small mines and quarries, an old brickworks, the odd horse stud, a bit of farmland and cross a former railway, now the Middlewood Way.

After refreshments the route follows the Cheshire Ring Canal Walk, suitably adorned with interesting bridges and an aqueduct. The National Trust Lyme Hall and its parkland are next. We continue through the grounds and on up to Higher Moor and Dissop Head, with fine views in all directions. A slight dip follows as we



head on to Derbyshire, Whaley Moor, and the Plague (or Dipping) Stone (photo left). Then it's downhill all the way to Toddbrook Reservoir, Whaley Bridge and the River Goyt.

Limited parking is available at Whaley Bridge railway station and in the adjacent streets. There will be a few cars strategically parked to ferry the happy participants back to the start, about 15 minutes drive away.

The walk is just less than 17 km long with 500 metres ascent and descent. The slopes are generally fairly gentle although there are a couple of steep bits.

I look forward to seeing you on the walk. If you can help with transport please let me know.

Contact Chris Wilson, by email on c.wilson.48@talktalk.net, by phone or text on 07881698758 or by any other method you can think of. It will be a good day out.

22-24 March TYW Early Spring Meet Neil Weatherstone

The meteorological and astronomical winters will be over (just) in time for this visit to our Welsh hut. There may still be a little snow or ice to play on if we are lucky, but it is more likely a good time to get some walking or climbing in before the summer crowds arrive. I will have my children with me on this weekend and I plan to conquer the vertiginous heights of Snowdon with them on the Saturday, via the Rydd Ddu path.

Please call, text or email me to book your bed. I will try to coordinate lift sharing.

Neil Weatherstone tel. 07946 825798 email neil.weatherstone@btinternet.com

30 March Annual General Meeting Robin Hood, Baslow

The Annual General Meeting of the Club will take place at 8 pm on Saturday 30 March 2019 at The Robin Hood Public House below Birchen's Edge.

The draft agenda, accounts, minutes etc will be circulated separately. It is your responsibility to bring any copies of these you require to the meeting. Multiple copies will not be available.

There are a number of items along with the usual reports and elections that will be considered at the AGM. At the moment these are:-

The Committee has been looking at updating the constitution, we will be considering the **adoption of the new constitution**. This has been circulated separately from the newsletter.

The Committee has adopted a **Health and Safety Policy and a Privacy Policy**, the AGM needs to endorse these policies. (Available to view on the Club website under the Policies tab).

Please send any other motions for debate to Chris Wilson **by 15th March**.

Nominations for Officers of the club and other (3) members of the committee are welcome and **must be submitted by 15th March**. Each nomination must be in writing and supported by two full members of the club along with the consent of the nominee. **There is a vacant position for a Secretary**.

All correspondence to be sent to:-

Chris Wilson, Plantation Lodge, Upper Lumsdale, Matlock DE4 5LB email c.wilson.48@talktalk.net

NB if you want to eat at the Robin Hood before the meeting they have requested two weeks notice. Please contact them to book in. Tel. 01246 583186.

31 March Spring Stride Snod Helliwell

This is an opportunity to walk in the north of the county, enjoying superb views for the whole day, and with easy access for those stopping overnight at the luxuriously refurbished Heathy Lea after the AGM. We will park in Peak Forest at 10.30 am for a 10.45 departure. Coming from Heathy Lea on the A 623 turn right at the traffic lights and park along the roadside near the old chapel, grid reference SK115 796. We will then proceed round the back of Eldon Hill and into Conies Dale before descending to Mam Nick. From there we will go up onto Rushup Edge with, weather permitting, glorious views of Kinder. From there across the fields to the Wanted Inn for a late lunch. Tea, coffee cakes, soup or a Sunday roast. We should support these country inns or they will go the way of the Cat and Fiddle, the Bull i' t'thorn and numerous others. Once fed and

watered we will go across Perrydale and back to the cars. It would be nice to let the Wanted know how many people will be eating so do let me know if you are definitely coming. But, in the way of the world most will check the weather forecast before committing so I will have to take a guess!

Dave "Snod" Helliwell email fingertipdave@outlook.com tel. 01298 812753.

Notice of BMC AGM, 31 March 2019

The BMC AGM will be taking place at the Devonshire Dome in Buxton on Sunday 31st March 2019 from 12 noon (registration from 09:30 to 11:45). A summary of the BMC's finances and activities over the last year will be provided.

If you are unable to attend you may submit a proxy vote, this can either be done via the chair or via Spenser Gray (BMC Membership Number B543659). If the BMC has a registered email address for you you will receive an email from Electoral Reform Services by 2nd March. If the BMC does not hold an email address for you you will be posted a proxy voting form which must be returned to the BMC.

To the best of our knowledge the main issue for discussion is an increase in subscriptions of £6 per person from the start of 2020. This is a result of a significant increase in the premium for the BMC's insurance scheme as a result of a life changing accident involving two members of a club based in the North East of England which has resulted in a claim of more than £5 million. If the subscription increase is not approved the BMC will likely either be forced to end the insurance scheme (which would remove legal protection for committee members, trustees, and those providing advice to less experienced members), or to limit the level of cover afforded to members (currently £15m). This may impact on access at crags like Cheddar Gorge where this level of public liability insurance cover is mandatory for all climbers.

For further information on the proposed subscriptions increase please go to the following web address:

https://www.thebmc.co.uk/media/files/Paper_A_Membership_subscriptions.pdf

5-7 April New Members' Meet Ben Wooler



Left: New Members meet at Stanage 2018.

Following the success of previous New Member's meets, and the desire to test out these fancy new bunk beds at Heathy Lea, the club will be running another weekend meet over the 5th-7th April.

The format of the weekend remains unchanged with a group likely climbing on

the Friday night followed by a gathering at the hut. On the Saturday morning we will head out to a local crag.

Saturday evening will include a hearty meal provided by Spenser and Michael followed by the usual bonfire and merriment. **Please ensure you inform me in good time if you are attending and also of any dietary requirements** so there is enough to go round. Rumours are of a fish kedgeriee and a vegetarian pie followed by a dessert of some sort.

Sunday will once again see us out on the local crags before heading home when daylight or enthusiasm fades.

The cost of the two nights in the hut plus Saturday's evening's meal will be £10, payable on the weekend. Please come along and support your club, these meets have brought in many new additions to the club over the last few years, including the meet leader...

Please contact benjaminwooler@gmail.com if you wish to attend.

5 – 12 April Glen Carron Neil Thompson

I've rented Glenuiag Lodge near Achnashellac from Friday 5th April to the following Friday morning. The lodge is a comfortable and well placed shooting lodge six miles up a track in Glen Uig allowing access to seven otherwise inaccessible Munros eg. Lurg mhor. The house is well appointed, self catering and an ideal escape, see website: www.glencarronestate.co.uk/glenuaig. The lodge sleeps eight people and we have three places available at £140 pp. Anyone interested please contact Neil on 07885 637504. Transport can be coordinated to suit.

Wednesday 10 April Banff Mountain Film Festival Tour

Nottingham Playhouse 7:30pm tickets £15 (£13 concessions)
www.nottinghamplayhouse.co.uk

Easter 19 April onward

Some club members will be heading for Fontainbleu bouldering. Others with more time may be going further south. Ariege in the Pyrenees is a venue being researched. Contact Spenser Gray, Meets Secretary if you are interested or have another idea in mind.

Saturday 27 April Free Solo film at Middleton by Wirksworth

The village cinema in Middleton-by-Wirksworth, Cinema Middleton, will be screening Free Solo, the Alex Honnold film, on Saturday 27 April 2019 at 7.30. They only charge £4 admission and have a licensed bar for beer and wine.

3-6 May Bank holiday weekend Gower Michael Hayes

I have booked the Oread on to Oxwich Camping Park, a quiet campsite on the western end of the superb Oxwich Bay Beach. The campsite allows tents and campervans to be pitched in a group but there is limited electric hook up on site and the standard cost per person is only £10 per night. No need to pay upfront but please let me know if you are coming so I can make sure we have enough space. Just around the coast from Swansea the Gower was designated Britain's first Area of Outstanding Natural Beauty (AONB). It was singled out for its geology and its outstanding coastal habitats. Within 70 square miles are cliffs, beaches and dunes, salt and freshwater marshes, wooded valleys and farmland. Oxwich has its own crag and at the other end of the beach is Three Tors all providing a great range of climbs straight off the beach from Diff to E6 so plenty for everyone to enjoy.



For more information and to book onto the meet please contact me.

Michael Hayes: Tel. 01530 231401 mobile 07771 700913. Email: michaelhayes6688@gmail.com

14 July – 4 August Alpine Meet Otztal, Austria Spenser Gray

This year the Oread Mountaineering Club will be visiting the Otztal valley in Austria. Some of the mountains were featured in Chris Radcliffe's evening lecture back at the start of October. For those who were unable to attend it looks like a stunning area with a choice of snowy alpinism, rocky alpine ridge scrambles, bolted multipitch rock routes in the Stubai Alps, a range of Via Ferratas and a huge number of single pitch crags. For those who are less vertically inclined there are a number of valley walks and mountain bike rides which can be undertaken either directly from the campsite or with a short drive. As ever with the alps there are also some sizeable climbs for the road cyclists to undertake.

We will be staying at Otztal Camping Arena in the village of Umhausen, this is located at the heart of the valley. Camping will cost around 12 euros per person per night (depending on size of tent). This is one of the cheaper campsites in the area and appears to have excellent facilities (although I am yet to figure out what an Adventure Shower is...):<https://oetzalcamping.com/>

There are several guidebooks which cover the area:

Alpine Guides:

<https://www.needlesports.com/2699/products/oetztaler-alps.aspx>

<https://www.needlesports.com/2599/products/stubai-alps-and-south-tirol.aspx>

These are both quite old, I would advise checking online for more recent beta on routes, particularly snowy ones and routes with fixed gear:

<https://www.climbers-paradise.com/en/>- This provides info about climbing across the Austrian Tirol.

<https://www.summitpost.org/tztal-alps/153953>- Otztal only, good for planning a day out but useless for use on a route.

<https://www.summitpost.org/stubai-alps/155126>- Stubai, again good for planning, but not much use on a route.

www.bergsteigen.com- Details a limited number of routes in the area, print outs may be useful for planning a route.

<https://www.stubai.at/en/activities/climbing/>- Bit like climbers paradise but for the Stubai Alps.

More recent German Language guidebooks seem to be these:

<https://www.rother.de/rother-alpenvereinsf%FChrer-%F6tztaler%20alpen-1123.htm>

<https://www.rother.de/rother-alpenvereins-%20und%20gebietsf%FChrer-stubaier%20alpen-1271.htm>

Walking:

<https://www.needlesports.com/4358/products/walking-in-austria.aspx>

https://www.amazon.co.uk/Innsbruck-Mountain-Adventures-multi-activity-Austrias/dp/1852849584/ref=sr_1_1?ie=UTF8&qid=1543359107&sr=8-1&keywords=innsbruck+mountain+adventures

Sport Climbing:

Single Pitch: <https://bit.ly/2P7h9oT>

Multipitch and Single Pitch (Innsbruck area): <https://amzn.to/2P3QJo8>

<https://amzn.to/2BBP2L7>

Mountain Biking:

[https://www.oetztal.com/summer/biking-cycling/bike-routes/mountainbike-tours.html#area=1027337&cat=Mountainbike%20Routes&ov=mtb&wt=Oetztal%20\(Geographic%20region\)%0A1027337&zc=9,10.9474,47.02007](https://www.oetztal.com/summer/biking-cycling/bike-routes/mountainbike-tours.html#area=1027337&cat=Mountainbike%20Routes&ov=mtb&wt=Oetztal%20(Geographic%20region)%0A1027337&zc=9,10.9474,47.02007)

Mapping is provided by the DAV (Alpenvereinskarte) or by Kompass. I have heard good things about the Alpenvereinskarte and have previously been disappointed by Kompass maps. Alpenvereinskarte numbers 31/1, 31/2, 30/5 and 30/6.

There is a useful app which you can use to see which lifts are open on any given day for the Otztal:

<https://www.oetztal.com/summer/services/mobile-apps.html>

Some standout routes seem to be the North Ridges of Wildespitze, Weisskugel and Hinterer Brochkogel, Mischbachgrat (Habicht), East Ridge (Zuckerhutl), East Ridge (Wilde Leck), NE Face (Schrankogel), NW Ridge (Ruderhofspitze), N Face (Ruderhofspitze), NE Ridge (Maningkogel), Luftballonweg (Maningkogel)

I aim to leave the UK on 14th July and return on the 28th, other people will likely be travelling out the weekend after and many of the retired members will use the trip to facilitate a leisurely tour around the crags and vineyards of Europe on the way home (at least they will if previous years are anything to go by). Spenser Gray: Mobile Number 07534821500 Email oreadmcmeeets@gmail.com

10 – 21 October Kalymnos Michael Hayes



Kalymnos is a Greek Island situated close to the Turkish coast and is one of the most enjoyable sports climbing venues in the world. The climbing scene is perfect with over 60 crags and hundreds of routes at all grades. My 2016 guide has over 400 pages.

Most people get to the island via a flight to Kos with Jet 2 from East Mids / Birmingham or Manchester and then a boat to Kalymnos main harbour. Taxis, Bike and Car hire are plentiful, and most climbers stay around the town of Masouri which has loads of low cost accommodation and excellent bars and restaurants.

The dates are flexible as many stay longer than one week but our plan is to fly out from Birmingham on the 10th October and book into a

hotel at Mastichari on Kos as it arrives quite late. The following morning we will take the boat to Kalymnos, pick up a hire car and drive the short distance to Masouri where there is loads of accommodation if you book early!

We are booked into the Louis Apartment 6 with Airbnb from the 11th to the 21st Come and join us for a fantastic holiday.

For more information and to book onto the meet please contact me.

Michael Hayes: Tel. 01530 231401 mobile 07771 700913. Email: michaelhayes6688@gmail.com

Copy deadline for next issue is 22 March.

Members' Corner

Here's the regular spot to share info, ask for hints and tips, put your For Sale and Wanted ads, write open letters to the committee and generally make your voice heard. All non-libellous contributions welcome!



Well actually this one might be classed as libellous.....

Benidorm's Most Wanted Dealer?

He says he spilt the sugar.....

A likely story!

News, Articles and Reports from Meets.

Heathy Lea moves on. Phil and Yvonne Waterson.

It has been an eventful couple of months at Heathy Lea. With a small working party planned for Saturday 19th of January Yvonne and Phil took delivery of the new bed frames on Monday 14th and prepared for an advance working party on the Wednesday to remove the alpine beds, repair the walls, decorate and varnish the floors.

Mike Wren and Phil, wielding sledge hammers and crow bars, soon had the beds removed, passing all the wood out of the windows for Yvonne, Pam and Ruth to ferry it to the old wood store, where it is being stored before being reused to build in seating / beds under the mezzanine in the barn.

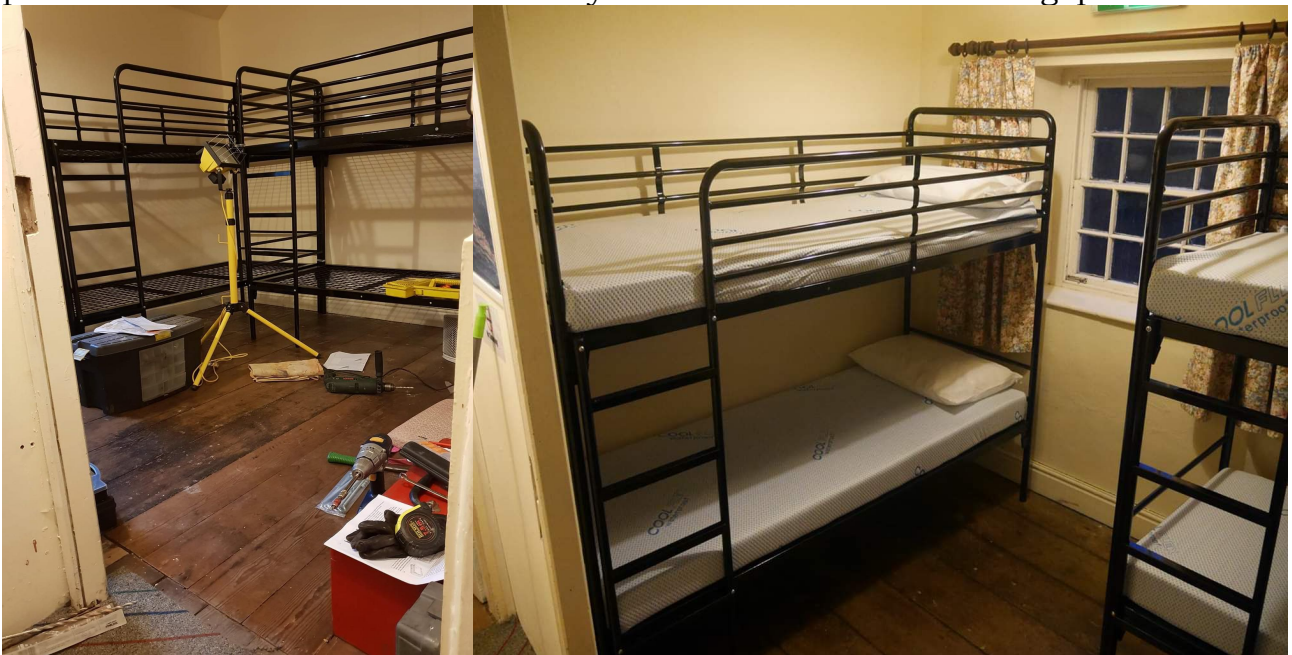


Activity halted when Kev Fidler arrived with his van to remove the old sofas, the consensus was “they went in so in theory they should come out”.

Eventually after much grunting and groaning they did!

Snod arrived and made a really neat job of repairing the large hole in the floorboards in one of the bedrooms whilst everyone else filled holes in walls. Pam scrubbed the lounge floor whilst we waited anxiously for delivery of the new chairs. Late afternoon the call came to say the driver in a very large delivery lorry was at the Robin Hood. It was down tools again to form a human chain to carry them down the drive. Thanks to Snod, in a high viz jacket, alerting traffic to the large vehicle parked on the bend any disasters were averted.

Our resident electrician Phil and his long suffering assistant Yvonne made a start on fitting the emergency lighting on the Friday before the new beds went in. Saturday arrived with an advance fall of snow the night before although thankfully not much at Heathy Lea. A quick second coat of paint was all that was needed before the new beds were transferred from storage and team Mike Hayes, Steve McDonagh and Mike Percival assembled them whilst Yvonne kept a low profile until it was confirmed that they fitted as she measured the gaps.



Phil meanwhile was wiring up the new storage heaters in the bedrooms! (no not a misprint). Mike P assumed the role of electrician's apprentice and apparently showed much promise. Ruth single handedly painted the lounge wall and Snod boxed in the glass panel on the landing then fitted and tested the emergency exit rope in the bedroom - but only after the two Mikes had used it as a sling to move the old storage heater to the lounge.



Those concerned that we are complying with Health and Safety requirements will be reassured to hear that the bunk beds are secured to the wall or each other. Don't think Snod expected the drill to come through the wall at exactly that height though.

Mike H showed off his musicality whilst synchronising the linked smoke alarms – what was that tune Mike?

With the newly purchased sofa and new chairs in place and the addition of a new corner coffee table and ambient lighting the lounge was looking really comfy.



With the newly purchased sofa and new chairs in place and the addition of a new corner coffee table and ambient lighting the lounge was looking really comfy.

Thanks to Pam for sourcing a new cooker and fridge and Kev again with his trusty van for



picking them up and disposing of the old ones.

With Mike H planning an advertising campaign the future of Heathy Lea is definitely looking up. It is hoped that the **indoor toilet** and new wash basin will be fitted soon and then we can start on improvements to the barn.

A massive thank you to all who have contributed to the transformation.

Limestone Walk 20 January 2019 Clive (Rusty) Russell



The day dawned wintry with a light mist and some remnants of snow. Having examined the party, and with due regard to the generally damp ground conditions, I opted for a less arduous route than originally planned and we took footpaths from Longnor to Hollinsclough and thence up the west side of the river Dove to the Packhorse Bridge. Ground conditions along this stretch were somewhat moist and the absence of any returning footprints from other parties was ominous. This however was my home ground (tastes do vary). My lawyers have perused a later written reference to "God forgotten bogland" but have advised me that this was not actionable on the grounds that the more fastidious sectors of the community might consider the description to be accurate. Crossing the river, we ascended to the

higher ground, Brand Top, where the absence of local named settlements nonplussed the sat nav users who were unable to get a "fix" After dining alfresco with the Highland cattle we turned towards Chrome Hill which presented robust problems like mud and slush rather than technical footwork The descent South from Chrome was a transformation, the snow having melted on the south ridge and the cloud receded to reveal the winter sun. We concluded with a beverage at Longnor Corner Cafe (page 794, footnote in Egan Ronay).

Those present, Ruth, Kasia, Spenser, Peter Amour, Snod, Chris W, Derek, Mike H. Thanks for your company.



The Wednesday Walk - A Longnor Lope Peter Amour

For the second time in a few weeks Oreads met on the free market square car park at Longnor. Whereas Rusty's previous venture took the booted north my plan was to take four of us on a clockwise course south of the village. Mr Russell's personal knowledge of the terrain exceeded mine, and so map use was minimised with the Oread's version of Siri being consulted instead.

My original plan was to use the parallel paths following the Manifold, but not those closest to it due to bog factors. The septuagenarian athlete advised the riverside route to be best. In pleasant and dry-ish conditions we followed the east bank of the Manifold before crossing it at Brund Mill, formerly a water power saw mill, before finally becoming a charactered dwelling.

While at the mill side road bridge two contractors arrived to carry out remedial work to the structure. Our athletic guide and former bridge engineer was soon amongst them to check the qualities of the materials and staff. Looking reassured he urged the walkers onward to a lunch stop bank-side at Blake Brook.

Food taken, the route passed through the oddly named Smedley Sytch and on to find our starting point via the undulating terrain by Hallhill and Fawside.

A dry day in the pleasant company of Rusty, Jan Wilson and Sue Todd culminated in supping tea in the market place cafe in Longnor - good value at £1-00 a cup. Sorry to see that Stuart Firth was under the influence of the winter lurgy, otherwise I'm confident that the four would have been five. (8.5 miles approx)

Bella Dolomiti - Tim Sellears

It was the famous Anne Robinson catchphrase "you are the weakest link ..." that sprung to mind when Jeff invited me on an ice climbing trip with two of his long term winter warriors Neil and Paul from Lincoln Mountaineering club.

Our destination was the renowned Sottoguda gorge in the Dolomites which can be visited using low cost flights from EMA and a two hour drive from Venice (Treviso) airport.

The trip did not start well when we found out just before leaving that a severe storm had destroyed the road through the gorge prohibiting access.

Luckily a helpful assistant in the local gear shop provided useful information on alternative routes in the valley and general conditions beyond.



Our first outing was a local route, not mentioned in any guidebook, where we



were told to follow the gully opposite the gear shop until we found ice !

After an uncertain start some easy angled ice appeared and a few pitches later we found the welcome sight of something longer and steeper.

The picture above (page 17) shows me on “Sophie’s left” and also gives an idea of the storm impact.

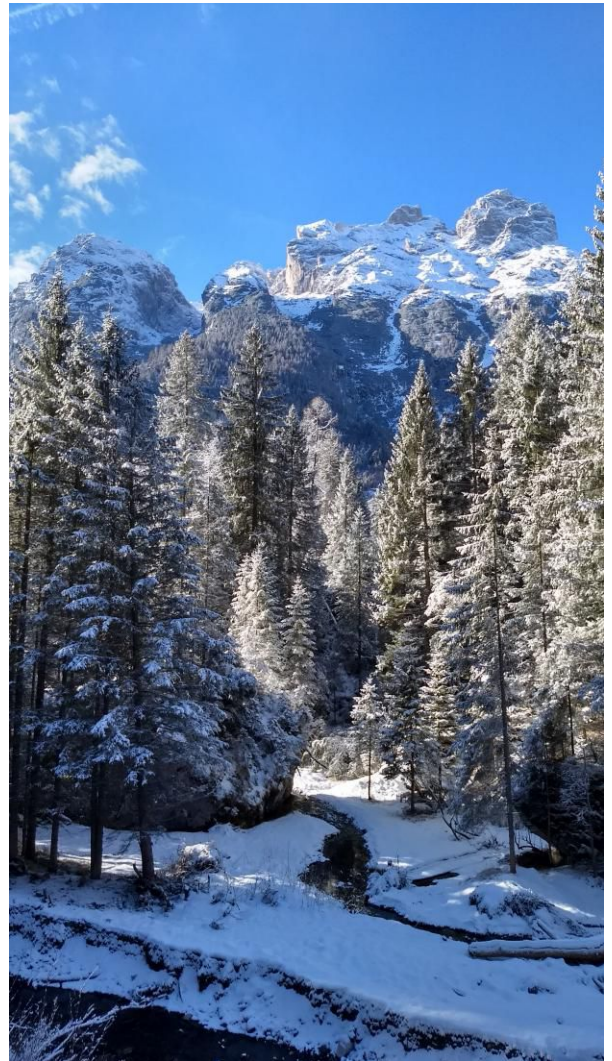
The next day we headed an hour north to Colfosco with the choice of numerous three pitch classic routes in great condition. The picture left shows Jeff climbing with Paul and myself

at the start of “Pissadu”.

A few inches of snow overnight meant that we awoke to not only poor driving conditions, our Venice hire car having “summer tyres”, but also warmer temperatures. We decided to drive 40 minutes south to Gares where we’d been assured most routes were in. Unfortunately after inspection by “L’esperto” this proved not to be the case, luckily the views across the valley made up for it.



Jeff inspecting “Tris” and deciding it wasn’t to be !



Given the excellent forecast we decided to avoid the busy roads on Saturday and stayed local for another “gear shop” foray opposite Capanna Bill cafe near the Marmolada cable car. We’d recce’d the route the day before which was a short walk downhill from the car park.

Although pleasant enough the route would have been better for the first day as it lacked any long steep sections. Paul and Neil had set off first and explored further by walking off the top when the ice ran out, this turned out to be the much quicker option. Jeff and myself decide to abseil down using the trees at the side of the gully. This proved to be trickier than first envisaged and after a rope that wouldn’t run followed by a snagged knot I got to make and use my first “Abalakov” thread ... which I’m pleased to say worked very well !

The picture below shows Paul on one of the upper pitches.



For Sunday we decided on different objectives with Paul and Neil heading off to explore “Sophie’s” other route options, which turned out to be rather good.

Although access through the gorge was prohibited Jeff and myself decided to try and find the top of “Excalibur” with a view to abseiling in and then climbing out. With some deft navigation and a little luck we managed to find the stream above the route, sadly without a fixed abseil rope it felt a bit too committing.

With the fine weather there wasn’t enough time to go for anything else so I consoled myself with a trip up the Marmolada cable cars for “birra e patate” ... oh and the view wasn’t too bad either !

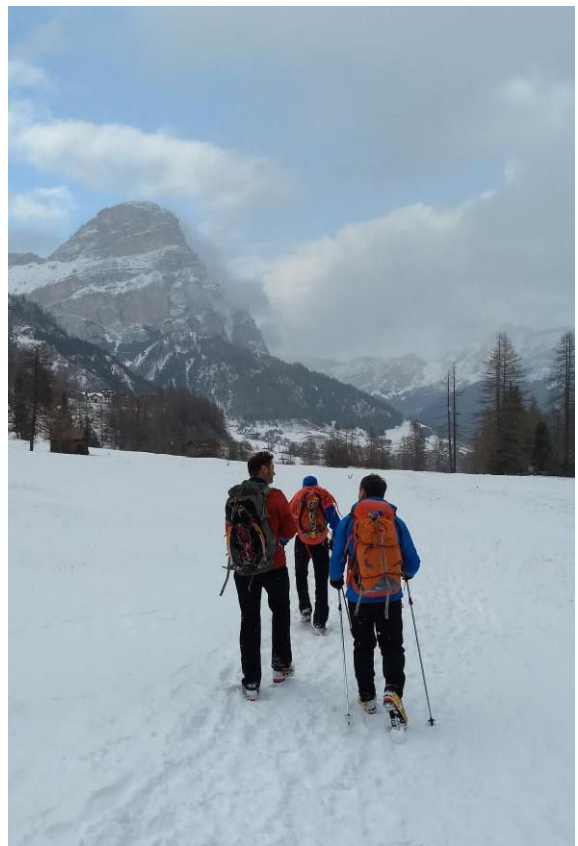


All too quickly we arrived at our last climbing day and the obvious decision was to head back to Colfosco. This time we'd try the routes at a different crag albeit not much further to walk. Paul and Neil went for "Solo per Pochi" and Jeff and myself for "Spada di Damocle"



The picture left shows me having just regained composure after an "Elvis moment" prior to the ice-screw being placed !

The final picture shows happy climbers at the end of the trip.



So did I end up as the weakest link on this trip with the seasoned warriors? Thankfully not, as that honour goes to Europcar for supplying cheap snow chains which broke on their second use ... arrivederci !

Hut Bookings.

TAN-YR-WYDDFA

1-2 March
15-16 March
17-21 March
22-23 March

Litchfield MC 8 beds
Scunthorpe MC 10 beds
C Craddock 4 beds
Oread meet

29-30 March	Emma Howard whole hut.
5-6 April	Clitheroe MC
13-14 April	Derbyshire Pennine Club
18-22 April	Mercian MC

HEATHY LEA

15-16 March	Durham Uni MC Cottage and Barn
5-6 April	Oread New Members meet
12-13 April	D Helliwell Panther Owners Club

“Whole Hut” includes the Oread room!

“Sole use – children present” means you may not stay overnight, even in the Oread room.

All queries, payments and bookings should be addressed to Michael Hayes, the Hut Bookings Secretary: 32 Hawthorne Drive, Thornton, Leicester, LE67 1AW. Tel. 01530 231401 mobile 07771 700913. Email: hayes_michael_j@cat.com

Our preferred method of payment is via bank transfer to our account with Lloyds - Sort Code **30-98-97**. Account number **62584068**. You must put your name **and either TYW or HL as a reference**. Otherwise the treasurer cannot allocate the payment to the right hut.

Please follow up with an email to Michael to let him know that you have made a payment and what it was for.

Alternatively you can post a cheque, payable to Oread MC, to the above address.

Information on Member Activities

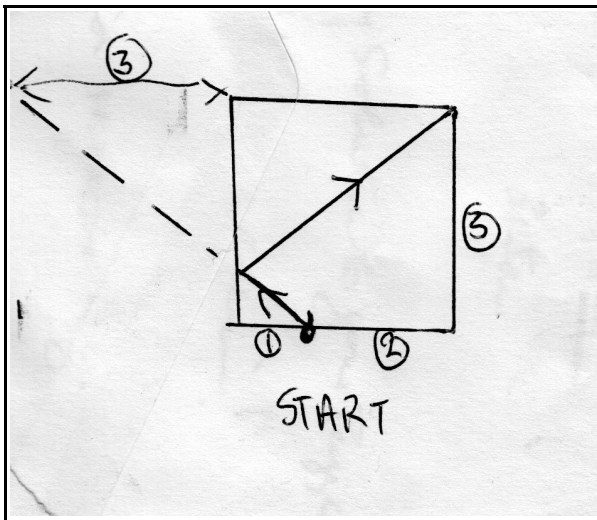
Applications for full membership have been received from Adam Casey, James Fidler, Ian Middup, Kevin Raisin-Moss and Sue Todd. If you would like to comment on any of these applications, which will be decided at the March committee meeting, please contact a member of the committee. Ed Day, Adhe Koukoui and Edd Mowbray have more recently applied for full membership, these applications will be decided at the April committee meeting.

Welcome to new prospective members Timothy Freeman, Dave Hayden and Louise Pymm. We hope you will enjoy many happy days with the Oread.

Rusty's Puzzle Corner

Last month's puzzle solution:

Aiming first for the left hand edge and then the top right corner, the requirements to touch both edges are satisfied with just one change of direction. If the initial direction is chosen such that the mirror image of the second part of the route (shown in broken line) forms a straight line with the first leg, than this clearly



represents the shortest possible distance. The distance run is therefore 3 miles longitudinally and 3+1 or 4 miles transversely, so that, by Pythagoras, the overall distance i.e. the root of the sum of the squares, is 5 miles which at 7.5m.p.h. would require 40 mins.

First to reply as usual, and with the correct time, was Roger Chapman, closely followed by Simon Pape who apparently was wrong but identified the runner: "His name was obviously Radcliffe!"

Rusty replies: " The identity of the competitor was so obvious as to only merit half a point. Another 23 such answers during the year will entitle Simon to a mars bar. In addition, I received a hand written solution from Digger who produced correct trigonometrical working, but chose a somewhat eccentric course with more than one change of direction. Just as I collect cheap plastic medals for oldest finisher in various races so should he for oldest correspondent."

This month's puzzle.

One for the rock climbers.

The following are abstracts from route descriptions relating to a major climbing venue.

- a)" the way lies up or down and it is not an easy route to descend"
- b)"from here it is possible to escape down a "
- c)"or take the and slab to a higher ledge on the left."

Which is the odd one out and why? Also who was the author?

Anyone who can answer the two questions posed will of course be able to identify the venue.

The wording of the descriptions is from traditional rather than modern sources.

Membership Renewals for 2019

- Please pay up now! All the details and rates were in the January newsletter. Pay by cheque made payable to the Oread Mountaineering Club, posted to Michael Hayes, 32 Hawthorne Drive, Thornton, Leicester, LE67 1AW or by bank transfer to our **new** account: **Sort Code 30-98-97, Account Number 62584068** with **Subs and your name** in the reference field. Once the money has been transferred please email hayes_michael_j@cat.com confirmation. Any questions then please contact Michael Hayes.



Another stunning photo from Pete Amour of Llyn Idwal on the Helyg meet.

Editor: Ruth Gordon, 4, The Terrace, Upper Lumsdale, Matlock, Derbys. DE4 5LB
Tel. 01629 56636 07999 857 922. Email alistair.ruth@btinternet.com