

OREAD MOUNTAINEERING CLUB MAGAZINE

OCTOBER - NOVEMBER 2016



Simon, leading, and Mick on The death of a witch. E1 at Porth Saint on the Gogarth meet. Photo courtesy of Spenser Gray.

Editorial

This is the newsletter you really must pay attention to because it contains the menu and order form for the Annual Dinner at Matlock Golf Club again. You need to act on this as there won't be another newsletter before the dinner on 12 November. Here also is the info for the eagerly awaited moment when we all pay our annual subscriptions!

Lots of meets and events to see us into the back end of the year – including the annual conflagration at Heathy Lea, followed by a splash round the Dash plus all the info on the Bullstones – in a particularly fine setting this year.

Tales of times past include further adventures of the Very High Speed Granny plus a double dose of sea and sunshine in Gogarth; and two more accounts of fun had in Yorkshire and Pembroke – what do they have in common? An unhealthy interest in cake! Those on diets should look away now.

Please note – there is **no** evening indoor meet in October – see within for details of the first indoor meet of the year on 1 November.

What's On

| Coming Soon | | | UK | Abroad |
|-------------|------|-----|----------------------|--|
| October | Sat | - 1 | | |
| | Sun | - 2 | | |
| | Mon | - 3 | | Climbing Unit, Derby |
| | Tue | - 4 | | Indoor meet, Cancelled |
| | Wed | - 5 | | Yahoo Group |
| | Thur | - 6 | | |
| | Fri | - 7 | | |
| | Sat | - 8 | | Derbyshire Dales Walk Jack Ashcroft |
| | Sun | - 9 | | |
| | Mon | 10 | | Climbing Unit, Derby |
| | Tue | 11 | | |
| | Wed | 12 | | Yahoo Group |
| | Thur | 13 | | |
| | Fri | 14 | | |
| | Sat | 15 | | |
| | Sun | 16 | | |
| | Mon | 17 | | Climbing Unit, Derby |
| | Tue | 18 | | |
| | Wed | 19 | | Yahoo Group |
| | Thur | 20 | | |
| | Fri | 21 | | |
| Sat | 22 | | | |
| Sun | 23 | | | |
| Mon | 24 | | Climbing Unit, Derby | |
| Tue | 25 | | | |
| Wed | 26 | | Yahoo Group | |
| Thur | 27 | | | |
| Fri | 28 | | | |
| Sat | 29 | | | |
| Sun | 30 | | | |
| Mon | 31 | | Climbing Unit, Derby | |
| November | Tue | - 1 | | |
| | Wed | - 2 | | Yahoo Group |
| | Thur | - 3 | | |
| | Fri | - 4 | | |
| | Sat | - 5 | | Bonfire Meet, Heathy Lea Neil Weatherstone |
| | Sun | - 6 | | Dovedale Dash Rob Tresidder |
| | Mon | - 7 | | Climbing Unit, Derby |
| | Tue | - 8 | | |
| | Wed | - 9 | | Yahoo Group |
| | Thur | 10 | | |
| | Fri | 11 | | |
| | Sat | 12 | | Annual Dinner, Matlock Golf Club |
| | Sun | 13 | | Post Prandial Walk |
| | Mon | 14 | | Climbing Unit, Derby |
| | Tue | 15 | | |
| | Wed | 16 | | Yahoo Group |
| | Thur | 17 | | |
| Fri | 18 | | | |
| Sat | 19 | | | |
| Sun | 20 | | | |
| Mon | 21 | | Climbing Unit, Derby | |
| Tue | 22 | | | |
| Wed | 23 | | Yahoo Group | |

2017 Meets List: support your club.

If you have enjoyed a meet with the club this year please help your Meets Secretary, Gil Male, by offering to lead a meet in 2017. Lovely trips to different climbing and walking venues happen because somebody books the hut, names the campsite or offers to share the times and venue of their own trip on a self-booking basis. Now so many of us are retired why not try a mid-week meet when huts are less likely to be fully booked? We also need meet leaders for local day walks and gallivants based around an overnight stay at one of our own huts. If you would like to lead a meet of any kind or need more information please get in touch.

Gil Male tel 07958 169389 email gilemale@gmail.com

Evening meets: every Monday at the Climbing Unit. Wednesday at Wirksworth Wall.

A group meets regularly at the Climbing Unit, Derby every Monday evening from 7-9 pm. After the exercise people head for the The Wilmot Arms, Morley Road, Chaddesden for a well – earned pint.

Over the winter there is also a group at Wirksworth from around 7 – 9.30 pm most Wednesdays, then adjourning to the Royal Oak, North Street.

Tuesday 4 October Indoor Meet Cancelled. Rob Tresidder

I have failed to secure a speaker for this occasion so, regrettably, I am forced to cancel. The next event will be on 01 November when we will be addressed by Dennis Gray (see below).

8 October Derbyshire Dales Walk Jack Ashcroft

Meet at Tissington at 10.00 am in time for the Ashbourne to Buxton bus for an autumnal ride as far as Crowdicote. Don't miss this opportunity, no doubt a first for many a club member. The intention will then be to walk back via Alstonefield. Don't rely on the bus service as an escape route – alternate Mondays would not be appropriate – and in any case it goes the wrong way.

Those who would prefer to put some pace into the day should consult Rusty. I'm sure he would prefer to jog the double without any need for bus timetables. It would just be a marathon or thereabouts.

Do let me know if you will be joining us.

Jack Ashcroft. Tel. 0114 289 0717

26 October Climbing Film Show at the Grand Pavilion, Matlock Bath

Reel Rock 11 is coming again to Matlock Bath with the latest collection of electrifying climbing films showcasing the sport's biggest stories and athletes.

Five new films deliver edge-of-your-seat action, globe-trotting exploration, big laughs and true inspiration.

That's the official write up: those who have been before say it is a great night out!

More info on the films at <http://www.reelrock.co.uk/films>

Tickets available from <http://www.reelrock.co.uk/tickets>

Tuesday 1 November Indoor Meet 8.00pm at the Royal Oak, Ockbrook Rob Tresidder

The first winter lecture of the season will take place on Tuesday 01 November.

Dennis Gray will deliver an illustrated talk entitled "Life and Times". Dennis is an honorary member of the Oread. He was the first general secretary of the (un-renamed British Mountaineering Council); he was a member of the Bradford Lads and later the Rock and Ice and climbed with all the luminaries of the 50s and 60s. These experiences are outlined in his first book, *Rope Boy*. Dennis is also a poet and musician and his illustrated talk will take us well into the present day.

4 – 6 November Heathy Lea Bonfire Weekend Neil Weatherstone

Remember, remember the 5th of November, Gunpowder treason and plot.....

This year's annual bonfire and fireworks event at Heathy Lea falls on the 5th, making it easy for you to remember the date and not forget to attend. The format for the weekend will follow the tried and tested pattern: gathering wood and building the bonfire during Saturday afternoon ready for lighting as twilight fades (about 5pm or so). Barbequing and cooking outside is encouraged, but not compulsory. There will be a fireworks display once the barbequing has mostly finished. As the event falls closely to Michael Hayes' 50th birthday, he will be kindly providing celebratory birthday beer for everyone. Cheers!

Feel free to walk, climb, boulder or cycle over the weekend. I plan to lead a local walk starting from the hut on the Sunday morning about 10am.

Please contact me to book a bed for the night. I plan to be there both Friday and Saturday nights with my family.

Neil Weatherstone tel. (07946825798 email neil.weatherstone@btinternet.com)

6 November Dovedale Dash Rob Tresidder

Sunday 06 November 11.00 a.m.

Leave yourself plenty of time to register(from 09.00). Parking is free in Thorpe Pastures. Entry is £5 for over 14s. Planning to arrive for 10.00 will allow time for queuing in your car outside Thorpe village or walking up from the riverside CP.

Remember — it may be wet the week before the race but it never rains on the day!

More (especially last minute) from me or on the Dash website - www.dovedaledash.co.uk/

Please let me have your time to the nearest minute. I understand that that *will* be

available at the finish.

Email Rob61.Tresidder@virgin.net tel. 07951 625378

12 November Annual Dinner at Matlock Golf Club Tony Howard

This year's dinner will once more be at Matlock Golf Club, Chesterfield Road Matlock (DE4 5LZ). Please arrive from 6.30 pm onwards, to sit down at 7.30pm. The price will be **£22** per person; slightly more than last year. The food was excellent last year and should be this year. There will be vegetarian and gluten free options. Beer and wine at reasonable prices will be available until the small hours - if enough of us keep drinking! There are many tales of incompetence this year, so competition for the Bent Screw award should be awe inspiring.

If you are staying in Matlock, cars can be left overnight in the Club's secure car park. There are bed and breakfast options within walking distance, or a short taxi ride; plus nearby parking for camper vans - it should be a great night.

See the back page for the booking form and payment details plus info on the overnight stay options.

Please help me out by booking early. I must have your bookings by **Thursday 3 November at the very latest.** (The caterers need final numbers 7 days in advance and cancellations can be accepted without penalty up to 48 hours in advance. I also need time to pick up your message and pass it on.)

It should be a really good do. I look forward to seeing you there.

Tony Howard, 134 Willson Ave., Littleover Derby, DE23 1TW

Tel. 01332 273307 0776 226 8181. **Email** tony.howard46@btinternet.com

13 November Post Prandial Walk Chris Wilson

In the dim and distant past I said "Yes" to leading the post prandial wander, thinking that it would be an easy task. More recently I've given it a bit more thought, and then the editor was there, asking for the newsletter article. The challenge; a circular walk of 10 to 12 miles with a good pub at the half way point, with short cuts available for late starters or early finishers, and a walk that takes in new territory. How hard can that be? So this is the result:

We will assemble by the layby opposite Highfields School in Matlock (SK3120 6126) and at 10.15 (at the latest) the march will commence. A meander to Tansley (latecomers can meet us here by The Gate), on to Cocking Tor and eventually we'll end up at Eastwood (I hope). The object of the walk should then be found, The Fabrick (Ashover Rock). A couple of tunnels will then lead us to The Black Swan in Ashover and lunch.

Various options are available for the return. The X17 can be caught at Kelstedge. We could repeat last year's walk. I expect to return via Cross Hall, Lant Lane and Packhorse farm. The total distance is about 11 miles, 6 of them before lunch. Should there need to be a change of plan, this will be announced the night before at the dinner.

If you would prefer to drive there's plenty of parking in Ashover, and an alternative walk would be to visit the other two pubs in Ashover on the way to the Black Swan. Chris Wilson tel: 01629 580521 email: c.wilson.48@talktalk.net

19 -20 November Self Rescue & modern rope techniques

Two places still available on this two day course , contact me if you need more info. Pete Lancaster tel. 0114 2301136 email petel1952@hotmail.co.uk

2 – 4 December Bullstones 2016 Pam Norris

Well, fellow Bullstoneers, this is the Lake District but not as you know it!

On Friday night we will assemble at The Old Crown at Hesket Newmarket GR NY342386 where food (until 8.30pm) and a selection of real ales (until whenever you wish) are available to purchase, with ample parking nearby in the large village car park. At the allotted witching hour we will drag ourselves away from the warmth, comfort and ale of this delightful hostelry and venture out into the cold and murky night to head via Nether Row to our bivvy site amongst the old mine workings of Potts Gill.

On Saturday morning (after a non-refreshing night of little sleep) we will take to the hills. The proposed route (though doubtless other shorter and more commodious options can be devised!) will take us over High Pike, Great Lingy Hill, Knott, Great Calva, then Mungrisdale Common via Skiddaw House (unless you fancy a short cut fording the River Caldew and adjoining bog!), before finally following the Glenderamackin River down to our accommodation for the night in Mungrisdale Village Hall GR NY364303, cost = £10 each.

Your bed there will be whatever you have carried with you all day laid out on the floor of the Hall, but otherwise there are all mod cons, kitchen (with pots, plates etc), heating, hot showers and the Mill pub a stone's throw away where meals (until 9pm) and various real ales are on offer.

On Sunday there are low, medium and high level options for the return to our cars - your choice of route will no doubt depend upon your personal predilections, the weather, and possibly how much ale you have consumed the previous evening?

If the opportunity to participate in this kind of perverse masochism appeals to you then contact me via email or 'phone to book your place.

pamandnodge@btinternet.com tel. 01524 60584.

If you are planning to eat at the Old Crown on Friday and/ or at the Mill on Saturday please let me know by **20th November** at the latest so that I can give them an idea of numbers.

N.B. If you wish to ration your intake of beer then please advise me of this beforehand & I will endeavour to ensure that supplies will run out at around 8.30pm on Friday evening!

Hope you will join me – the weather will probably be awful but fun for all is guaranteed!

P.S. We are away in sunny Spain for most of October – I'll respond to any emails on my return

Tuesday 6 December Indoor Meet 8.00pm at the Royal Oak, Ockbrook Rob Tresidder

Speaker: Stefan Hobday Ski touring in Senja @ 69 degrees north – Norway.

News, Articles and Reports from Meets.

The BMC rebranding as Climb Britain

As most people will be aware, The BMC announced a decision had been made to re-name itself **Climb Britain**. After the decision had been made "consultation" with membership followed at a series of Area meetings, of which the Peak Area Committee on 14 September was the last. After discussion in the Oread committee meeting of 13 September a letter was sent to Dave Turnbull, Chief Executive of the BMC, and copied to the Peak Area Committee, expressing the Club's objection both to the re-branding and the process by which the decision to do so was reached. The letter stressed the importance of the BMC being clearly seen to be an independent body, free of commercial interest, but stated that the club was sorry to write negatively when the BMC does so much to support the interests of mountaineers, climbers and hillwalkers.

The following reply has been received:

From: Dave Turnbull <dave@thebmc.co.uk>

Subject: BMC / Oread

Date: 20 September 2016 at 07:05:33 BST

To: "nigel.briggs@btinternet.com"

Many thanks for your letter Nigel,

As you may be aware by now the 11 BMC Area meetings and the Clubs meeting held between 1-14 Sept reached a very strong consensus on the Climb Britain rebranding proposal. The BMC's National Council reviewed all of the feedback at its meeting on 17 Sept and on the basis of this made the firm decision that the BMC will remain as 'the BMC' and that the rebrand to Climb Britain will not take place.

There was however general approval amongst members for us to investigate other potential uses for Climb Britain e.g. as a promotional campaign or marketing mechanism aimed at indoor climbers.

There will be a more detailed formal statement on the BMC website later this week but for the time being I hope this is a satisfactory summary.

All the very best and many thanks to the Oread for your support of the BMC.

Dave Turnbull

North Yorks Moors – 2 and 3 July Chris Wilson



We chose to camp at Bungdale Head Farm, and it proved to be a lovely site where we were given our own field.

With a forecast promising the occasional downpour on Saturday, we all joined Jan's walk to Helmsley. This took us up through the woods above the River Rye where we caught fleeting glimpses of Rievaulx Terrace before we dropped back

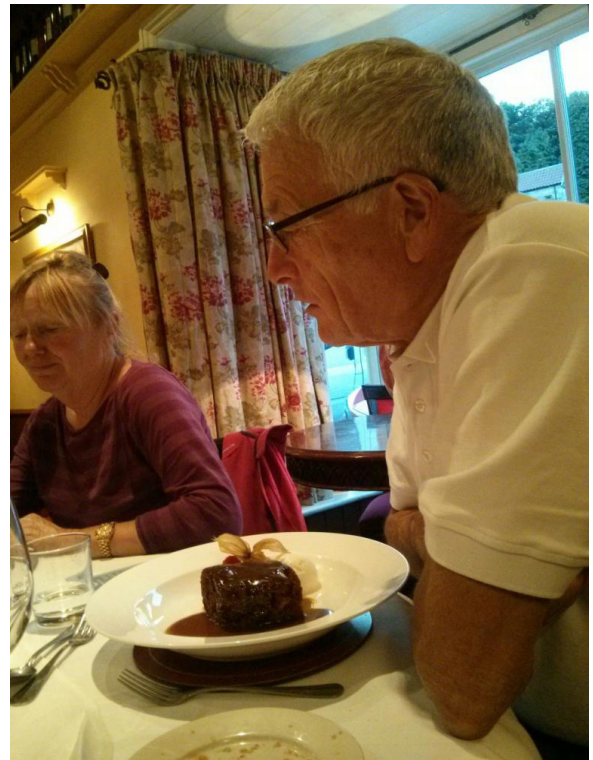
down to cross the river. A brief stop at Rievaulx Abbey was taken before we then joined the Cleveland Way which we followed up the hill through Spring Bank Wood and eventually the fleshpots of Helmsley. After lunch on the Market Cross the Sugared Butterfly coffee shop provided drinks and enabled Chris R to sample the local cake before indulging in a brief power nap.



Before returning to the campsite some visited the Walled Garden whilst others preferred the Helmsley Brewing Company. Snod and Derek visited Duncombe Park to see a Steam Rally. In the evening we all went to the White Swan in nearby Amplethorpe for a lovely meal (and, for Chris, more cake!).

Sunday's venue was Scugdale, where the sun shone. We left most vehicles in Swainby and went in two cars up the valley. A short blast up the hill led us to the crag where Beginners Slabs proved a good place to get acquainted with the (harsh!) grading and (slightly worn) rock. We all then moved left along the crag. Amongst the climbs done were Holly Tree Wall, Scugdale Chimney, it's Eliminate and Pets Corner. The weekend finished with tea by the river in Swainby.

Another great weekend of walking and climbing in the North York Moors. Thanks to Chris R, Derek and Joan, Snod and Ruth, Simon and Maggie, and Jan.



Gogarth 16 – 17 July Spenser Gray



This year's Gogarth meet was reasonably well attended with seven people arriving at various times on the Friday night. *(Actually Snod and your Hon. Ed. arrived too, Friday lunchtime – but thick dripping mist and the need to head home by midday Saturday caused us to sneak off early with our tails between our legs!)*

Saturday provided a false sense of security about Anglesey's sea cliffs with a visit to a friendly little crag near Rhoscolyn called Porth Saint, partly motivated by some decidedly threatening - looking clouds, partly by rain which was described optimistically as "a heavy sea mist" and partly by wanting not to spend an afternoon prusiking up a rope if the heavens truly opened!

After a quick coffee break to wait out the rain we headed over to the crag and quickly found ourselves in bright

sunshine with a great view of the thick mist shrouding Holyhead Mountain. The quality of the rock was surprisingly good and after climbing a VS (pictured above: Time and Tide wait for no man) and an HVS in good style it was time to address an inviting looking E1 (Death of A Witch – see front page photo). On topping out there was a general feeling that it was a bit soft so we went and climbed a second which looked like it may be a little more fierce (A Fear of Sharp Things). It wasn't, shortly Derek had been coerced into tying in and seconding it leading to the statement "It's no harder than V Diff"! Thinking we were on a roll the crag had another E1 lined up for us (Lineback Offensive). This one more than made up for the other two soft touches!

Sunday was spent at Castell Helen as the morning had brought fantastic

weather. The first route of the day was Lighthouse Arete Direct at Castell Helen which I had wanted to do for the last couple of years, it did not disappoint with excellent moves all of the way up the route! This brings us to Simon's choice for the day, Northwest Passage, a route which could justly be described as absolutely brilliant. The first pitch was excellent quality, however the real meat of the route is in the second pitch, a description of which can be found below:

"Peering upwards I can see the ropes disappearing into the mist as they approach the top of the crag. A faint shout of "Safe!" echoes down from the top of the crag, I take Simon off belay and begin stripping the anchors to ensure a quick start to the pitch. At least that's what I pretend to myself, the real reason is that I want to stay occupied, not think about the fact that the moves by the peg seemed to slow Simon down a bit. Something that slows him down is never a good sign when most of us are fit and confident, I was neither. Suddenly I am on belay, I strip the last piece from the anchor and begin to follow the line of holds out above the void, thankful for Simon's myriad gear placements showing the way. The initial traverse goes well, I reach the peg and quickly unclip the rope as I move past with doubts as to the peg's ability to hold a swing pushing forward in my mind. Suddenly the moves start to flow, only interrupted by the occasional piece of gear. A sense of urgency begins to develop in my mind as I pull through move after move hoping for a respite. Finally I find myself on a ledge six feet from the top, with Simon's feet dangling over the top, weighed down by what appears to be 90% of Simon's rack. I can see some good crimps, I reach up, I stretch, standing on my tiptoes they're still out of reach. I make my feelings on the subject of tall people reaching past hard moves clear to Simon. In response he confirms that he had a second significant advantage at this point, most of the rack was in the pitch below him! After a re-examination of the holds available to me I find an acceptable sequence and pull over onto the top of Castell Helen thoroughly glad that I had only followed, rather than led, both of the pitches on North West Passage bringing this year's Gogarth meet to an end.

A Monday's Exercise, 5th September 2016

I have been promoted; I am now Senior Apprentice, having reached 70! I was also allowed to lead another 'big push', which was to have been from Fairholmes car park and over Lost Lad etc. It would have been 9.5 miles. However, at 8am on the day of the 'exercise' I received a phone call from our C-in-C who with true Eisenhower diplomacy asked me if I had considered a wet weather alternative. Fortunately I had; it was up to Pilsbury Castle from Hartington; north up the west side of the valley, back along the east side. We began in damp cloudy weather and had a tea break at the 'castle', then lunch a kilometre east of this, where our route was due to turn south. However it was still only about one thirty and the total distance would have been only 5.5 miles. I sheepishly suggested an alternative; continue eastwards then NE to join the High Peak trail near Parsley Hay. "Boring" came the reply from one of our ladies. "The trail is boring", said the other! Was my newly acquired Senior status under threat already? I thought. The C-in-C and the other Aged Sage kept quiet. Perhaps I could recover the situation? I invited a full scale conference; senior management, the ladies, the

Tea Boy, the New Boy and me. There appeared to be only two alternatives, the original route and this one. We agreed on boredom in preference to brevity and an early visit to the pub. The C-in-C suggested that we could leave the Tissington trail at a bridge near Heathcote and follow minor roads back to Hartington. This was obviously better than the more major road into Hartington. The C-in-C was confident that there would be an exit from the trail onto the bridge, despite there being no sign of one on the map.

So we continued eastwards and soon came to a field full of black cattle including a powerful bull munching grass right on the footpath. I called another conference. Should we go through? The VHS Granny was forthright and confident that we should. Others were more muted in their response. A party of three coming in the opposite direction entered the field near the bull and were not attacked by it! We followed their example and survived unmolested. After a short break at Parsley Hay we walked down the trail, the leader in front with an Aged Sage and of course the VHSG. We had to endure frequent rowdy mutinous behaviour and cries of "boring" from the baggage train at the rear. There was also discontent over the exit strategy and suggestions that we would have to abseil from the trail to the bridge. I found this difficult to understand because the map clearly showed that the bridge was above the trail not below it! I have no experience of abseiling upwards you see! As we approached the bridge we could see steep sides and heavy undergrowth to left and right. No chance of an exit on either side. We walked under the bridge and the same was true on the other side. Were the C-in-C and I about to be made to walk the plank? It was getting worrying. Then after maybe 50 yards a narrow but very well defined limestone ramp led back up to the road. I was saved by my boss's experience and confidence! Apart from nearly being run over by a frantic housewife - twice - the return journey was uneventful. We walked 8.5 miles, starting at 10:15 and finishing at 15:45, ending the day with tea in the post office café. The team consisted of Colin, Uschi, Stuart Bramwell, Roma Wilcock, Pete Amour, his mate Geoff and me.

Apologies for all the military and naval similes, I have just had a week in Normandy – 1066, 1944 and all that.

The Senior Apprentice

Guidebooks free to a good home.

A box of historic guidebooks has been offered to us on a first come first served basis. If you would like any of these please just phone or email to let me know. Ruth Gordon – contact details at end of newsletter.

Climbers Club Wales: Cwm Idwal 1964; Llanberis North 1964, Llanberis South 1966, Cloggy 1967, Gogarth 1969.

Cornwall vol 2 1966. Baggy Point 1976. Yorkshire limestone 1968

Rock climbs in Lancashire & North West 1975 and supplement 1979.

FRCC Langdale 1961 and 1973.

Peak District: Sheffield-Stanage 1963, Northern Limestone 1969 and 1980,

Kinder Area c 1970, Staffordshire area 1981, Derwent Valley 1981, Stanage 1996.

Birthday boys discover new crag in Pembroke!



The end of August saw some significant birthdays celebrated with sun, sea and lots of good climbing done – though perhaps nothing quite as desperate as this steep and holdless cliff designed and created for the occasion by Natalie Sellars.

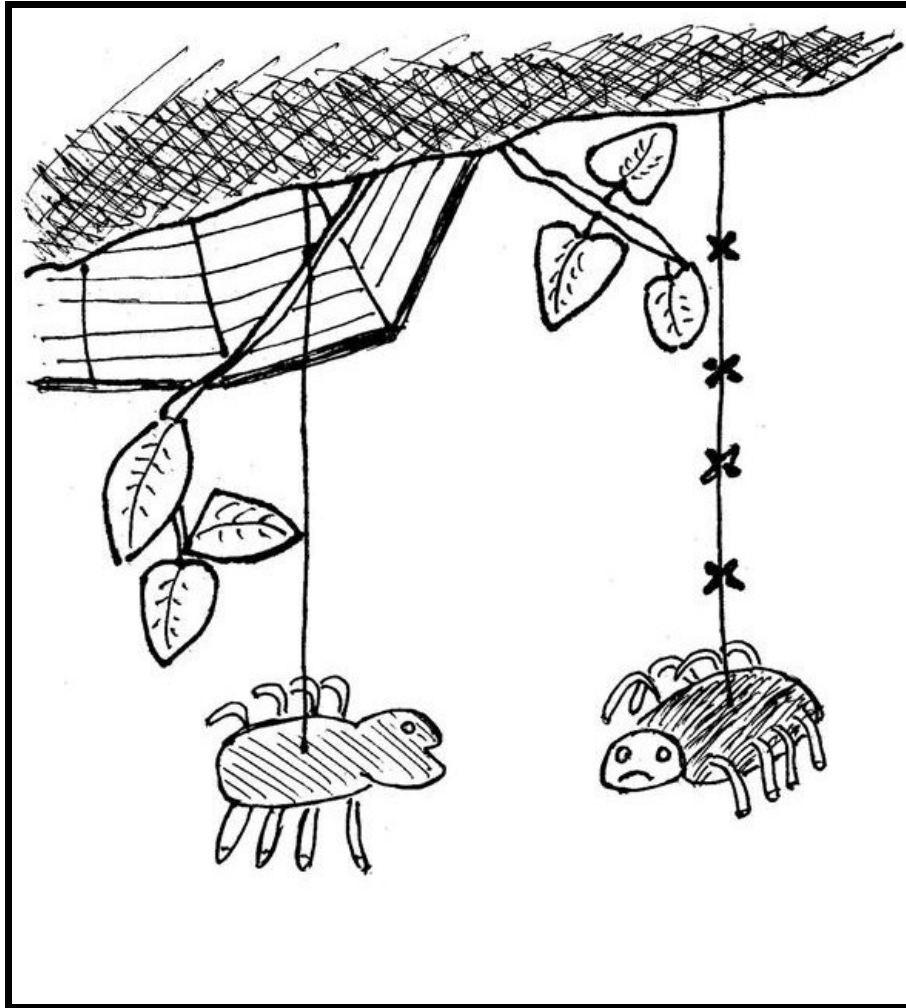


Thanks Natalie, from Simon, Pete and Snod for a truly stunning piece of edible artwork. It was delicious as well – unfortunately the local wasps thought so too!

We found an excellent campsite – Dewslake Farm – at Lamphey, near Pembroke, which was spacious, lots of grass, simple facilities and very laid-back.

The weather was generally kind except to Pete who got soaked both from above and below at Mother Carey's while most of us saw no rain at all!

Hobday's humour:



“Personally I always use Perlon – it's much stronger.”

Hut Bookings.

TAN-YR-WYDDFA

| | |
|--------------------|--|
| 30 Sep – 1 October | K Fellfarers |
| 13-16 October | John Green 2 places |
| 14-15 October | Scunthorpe MC 10 places |
| 14 – 16 October | Tony Howard 2 places |
| 17-21 October | David Appleby 12 places |
| 4-5 November | Wolverhampton MC |
| 18-20 November | Derby MC |
| 2-3 December | Vibram MC (10 places. May also stay 1 st and 4 th .) |
| 9-10 December | Emma Hayes 16 places |

HEATHY LEA

| | |
|--------------------|----------------------|
| 30 Sep – 2 October | Pam Storer and party |
|--------------------|----------------------|

| | |
|----------------|------------------------------------|
| 7-9 October | Kendal MC S White |
| 14-15 October | Pam Storer |
| 21-22 October | U.E.A. |
| 28-29 October | Cambridge Climbing and Caving Club |
| 4-5 November | Oread Bonfire meet |
| 18-19 November | Roy Sawyer |
| 25-27 November | Southampton CC |
| 2-3 December | Wrekin MC |

“Whole Hut” includes the Oread room!

“Sole use – children present” means you may not stay overnight, even in the Oread room.

All queries, payments and bookings should be addressed to Michael Hayes, the Hut Bookings Secretary: 32 Hawthorne Drive, Thornton, Leicester, LE67 1AW. Tel. 01530 231401 mobile 07771 700913. Email: hayes_michael_j@cat.com

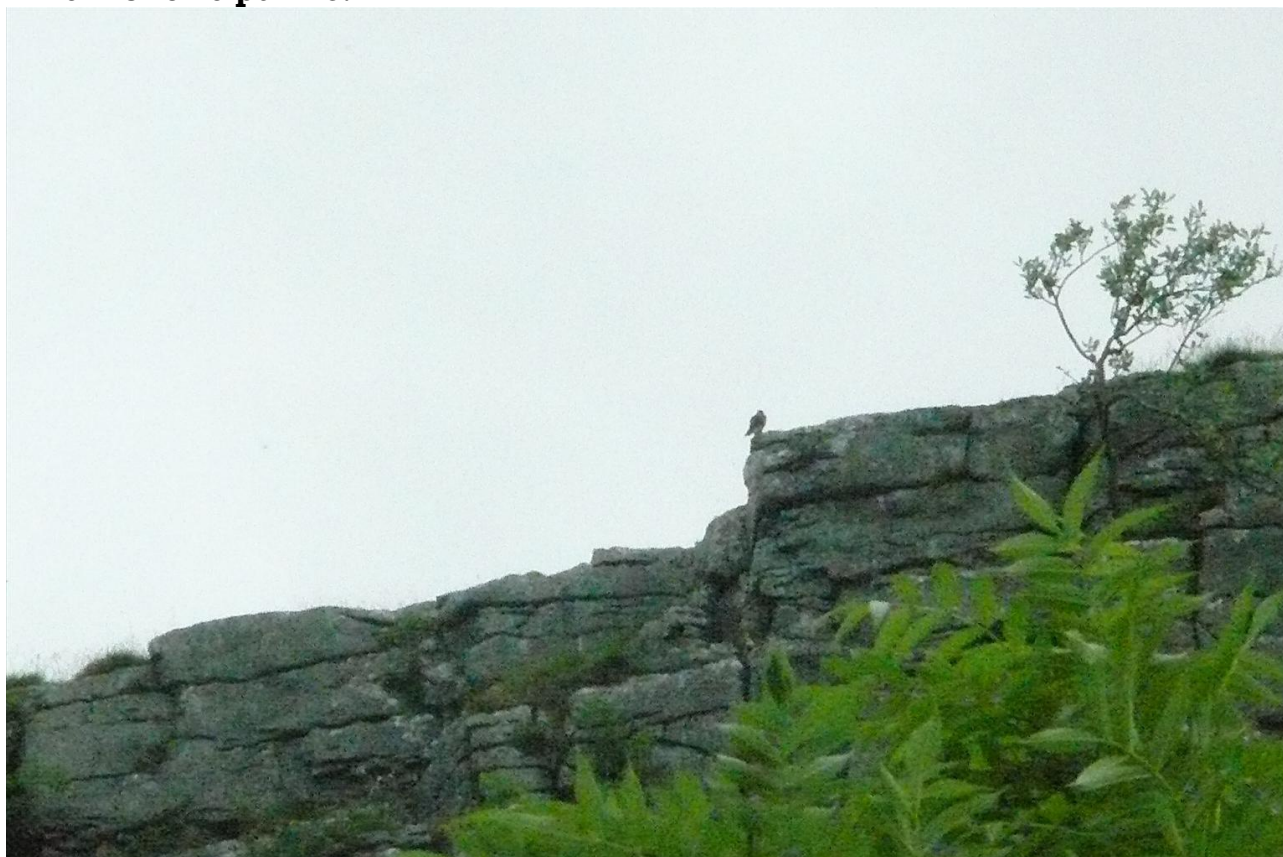
Our preferred method of payment is via bank transfer - Sort Code 05-04-07 Account number 45028744 With your name as a reference.

Please follow up with an email to Michael to let him know that you have made a payment and what it was for.

Alternatively you can post a cheque, payable to Oread MC, to the above address.

Rusty's Puzzle Corner

This month's puzzle:



Of what species is the bird of prey shown in the photograph and where is it

perching by its nest?

Last month's puzzle solution:

The well known scene, as correctly guessed by your Hon. Ed. among others, was of course Ashness Bridge. There was, in fact no connection between that lovely spot and the second part of the puzzle: Which two Oreads famously disputed the value of a pac-a-mac, and when?

The pac a mac saga.

The protagonists are the late Jim Kershaw, and Mike Moore. I quote from a meet report by the former. ".....two members of the party who refused to follow my example and buy a pac a mac. (price 17/4d)" later, "...."rain at the Isaac Walton and set off for the stepping stones and Dovedale (myself in a pac a mac value 20/-)"....."rain again, Moore and Geoff eyeing my pac a mac enviously (value 30/-)" and still later ".....it was still raining and I was obliged to refuse Moore's offer of £2 for my pac a mac." and finally "We ended up in a Bakewell cafe where Moore was delighted to find out that I was as wet as he was in spite of the pac a mac"

The meet report appeared in the January 1958 Newsletter and anyone interested in the full version can see it on page 94 of the 50th Anniversary Journal. I find it difficult to reconcile the route described with the course of the Lathkill which emerges from a cave at Monyash and joins the River Wye at Rowsley, but this is not relevant to the affair of the pac a mac.

Footnote.

Elderly gentlemen like Jack Ashcroft will doubtless be happy to explain pre decimal currency to the current membership.

Information on Member Activities

This month, partly due to not having had a committee meeting since June, we have a bumper crop of applications to become members of the Oread. These come from Jerzy (Jurek) Ansperger, Richard Broadhead, Beth and Graham Cooper, Emma Hayes, Katarzyna (Kasia) Sajdok, and Ben Wooler. If you would like to comment on any of these applications please contact a member of the committee.

New Address: Tim Cairns

Tim is now living at 11 The Causeway, Wirksworth, Matlock DE4 4DL

Membership Renewals for 2016

Although it's time to renew your annual subs we have once again managed to hold the cost for another year and so please renew early to take full advantage of it.

The subscription includes the BMC fee of £13.25 giving you all the benefits of individual club membership and in particular the BMC third party insurance.

How to pay: 1 of 2 ways

- 1 Please complete the form below and send it with a cheque made payable to the Oread Mountaineering Club, posted to Michael Hayes, 32 Hawthorne Drive, Thornton, Leicester, LE67 1AW.
- 2 You can pay by bank transfer Sort Code 05-04-07, Account Number 45028744 with (Subs and your name in the reference field). Once the money has been transferred please email hayes_michael_j@cat.com confirmation and a copy of the form below.

If you have any questions then please contact me. Michael Hayes.

| Oread Mountaineering Club Membership Renewal and Contact List Update | | |
|--|--------|--|
| Name | | |
| Second Name (Joint Membership) | | |
| Address | | |
| Telephone Number | | |
| Telephone Number Work | | |
| Telephone Number Mobile | | |
| Email Address | | |
| Secondary Email Address | | |
| Data Protection: I agree to my contact details being held by the Oread MC, shared with other paid up members and passed to the BMC to gain my third party insurance | | |
| Membership Type: Please tick relevant box | | |
| Ordinary Member | £40.00 | |
| Senior Member | £25.00 | |
| Prospective Member | £25.00 | |
| Joint Membership (Two people at the same address) | £65.00 | |
| Senior Joint Membership | £42.00 | |
| Joint Membership (One senior one ordinary) | £53.50 | |
| Member with permanent address outside the UK. 50% of appropriate rate as BMC membership is not included. | | |

Forthcoming Meets 2016

OREAD MEETS 2017

Please support your club. Meet leaders are required for next year (UK and abroad). If you intend leading a meet please contact Gil Male tel 07958 169389 email gilemale@gmail.com who will enter details in the Meets List Calendar 2017.

| <i>When</i> | | <i>Meet</i> | <i>Where</i> | <i>Leader</i> |
|-------------|------------------|--------------------------------|-------------------|-------------------------------|
| Oct | 4 | Lecture Cancelled | | Rob Tresidder |
| | 8 | Derbyshire Dales Walk | | Jack Ashcroft |
| | 8-17 | Sicily | San Vito lo Capo | Ruth Gordon (self-booking) |
| Nov | 1 | Indoor meet | Ockbrook | Rob Tresidder |
| | 5 | Bonfire Night | Heathy Lea | Neil Weatherstone |
| | 6 | Dovedale Dash | | Rob Tresidder |
| | 12 | Club Dinner | Matlock Golf Club | Tony Howard |
| | 13 | Post Prandial Walk | | Chris Wilson |
| | 19-20 | Self Rescue Course | Heathy Lea | Pete Lancaster |
| Dec | 2-4 | Bullstones | | Pam Norris |
| | 6 | Indoor meet | Ockbrook | Rob Tresidder |
| | 14 | Black Rocks Night Climb | Cromford | Rob Tresidder |
| | 23 - 1Jan | Christmas/New Year | Tan yr Wydffa | Rock Hudson |



Some of the group on the “Introduction to the Oread” meet enjoying September sunshine at Porth Saint, Gogarth. Watch this space for a full account of this very successful and enjoyable meet in our next issue.

Annual Dinner Overnight Stay Information

There are several bed and breakfast options within walking distance of Matlock Golf Club, or a short taxi ride away. Closest is The Duke of Wellington, which is less than 10 minutes fairly level walk from the Golf Club (tel 01629 582299 or via www.laterooms.com). A longer walk away, but downhill on the night, are The Old Sunday School, New St. tel 01629 583347 and the Red Lion, Matlock Green 01629 584888. There is also a Premier Inn on the A6 North, just out of town on the Bakewell side, a taxi-ride away. Taxis should be booked a day in advance, to be sure of a pick-up. You could try Matlock Taxis 01629 584195 or Fox's Cars 01629 583333.

For the Camper vanners and those requiring more basic accommodation there is a good camp site at Packhorse Farm 01629 580950 www.packhorsefarm.co.uk. This is around 25 minutes' walk away but it does involve footpaths across fields in the dark so we hope to be able to fit most people in at the Wilson and Gordon residences, 5 minutes' walk from the venue. We can offer van parking, tent and floor space (maybe a bed if you are lucky) - first come first served - so book early! Chris and Jan have kindly offered to coordinate the overnight stays so please contact them on 01629 580521, mobile 07881 698758 email c.wilson.48@talktalk.net

(They will be abroad from 18th October to 4th November. So it's best to contact them before this.)

Booking Form with menu options and payment information below.

Oread Annual Dinner Order Form

The dinner will be on the 12th November and will cost **£22** per person. Tea or coffee is included in the price.

Please write your name and the name of your guest(s) in the boxes on the top line and tick one item per course per person.

Post your completed form and payment to Tony Howard 134 Willson Ave, Littleover Derby, DE23 1TW, to arrive by Thursday 3rd November at the latest.

Payment should be by cash, cheque or postal order, payable to Oread MC. Alternatively you could pay by bank transfer. But if you do you must add a payee’s note saying who you are and that it’s for the Annual Dinner. Oread Account number: 45028744; Sort code 05-04-07.

Please tell me your payment method on the form below, e.g.

BACS/cheque.

I must have the completed forms by 3 rd November

(V) = suitable for vegetarians. (GF) = gluten free (OR) = on request.

| | | | | |
|--|--|--|--|--|
| Name: | | | | |
| Payment method | | | | |
| Starter | | | | |
| Tomato & mozzarella salad <i>(V, GF)</i> | | | | |
| Duck & orange pate <i>(GFOR)</i> | | | | |
| Leek & potato soup <i>(V, GF)</i> | | | | |
| Main Course | | | | |
| Chicken Chasseur <i>(GF)</i> | | | | |
| Baked cod loin on a bed of salsa <i>(GF)</i> | | | | |
| Mediterranean vegetable & brie parcel <i>(V)</i> | | | | |
| Dessert | | | | |
| Lemon posset <i>(GF)</i> | | | | |
| Chocolate tart | | | | |
| Fruit salad <i>(GF)</i> | | | | |

If you have any special dietary requirements please state them below (e.g. gluten/wheat/vegan). The Golf Club is used to catering for special diets. *Please contact them directly on 01629 582191 to be certain that they can cater for you and for your peace of mind.*

If you have a strong preference to be seated next to others, please state this below and we will do our best to accommodate you.

Editor: Ruth Gordon, 4, The Terrace, Upper Lumsdale, Matlock, Derbys. DE4 5LB
Tel. 01629 56636 07999 857 922. **Email** alistair.ruth@btinternet.com