

# OREAD MOUNTAINEERING CLUB MAGAZINE

**APRIL 2015**



**Farewell to Chuck Hooley 5 March 2015 Tan yr Wyddfa.**

**(Photo: Colin Hobday.)**

## **Editorial**

This newsletter heralds the beginning of Spring – I write just after a perfect Spring Stride – beginning in grey cloud and 3 degrees at Heathy Lea, rising to a glorious sunny 10 degrees as we made our way back to Hartington over Sheen Hill amid flowering gorse, snowdrops and daffodils.

An early Easter is almost upon us, hope you have a great time wherever you go – several options still open to all who would like to join in the fun - but first it will be time for our kick off to the summer with our first Wednesday evening climbing session at Harborough/Rainster as is traditional. Coming up soon are a trip to Little Langdale, a working party and barbecue at Heathy Lea, the delights of the south coast sea cliffs and it will soon be time for Peaky Scum to invade the Coonty again – we'll be off to Northumberland in mid May.

## What's On

Month	Day	Date	UK	Abroad	
April	Wed	1			
	Thur	2			
	Fri	3	<b>Easter Bank Holiday</b>	Easter in France Fontainbleau/Dijon Roger Gibbs	
	Sat	4	Range West briefing (Fri)		
	Sun	5	camping St Petrox, S Pembs.		
	Mon	6	Pam Storer		
	Tue	7			
	Wed	8			
	Thur	9			
	Fri	10			
	Sat	11			
	Sun	12			
	Mon	13			
	Tue	14		France Provence Ruth Gordon	
	Wed	15			
	Thur	16			
	Fri	17	Fylde Hut		
	Sat	18	Little Langdale, Lake District		
	Sun	19	Gill Radcliffe		
	Mon	20			
	Tue	21			
	Wed	22			
	Thur	23			
	Fri	24			
	Sat	25			
	Sun	26			
	Mon	27			
	Tue	28			
	Wed	29			
	Thur	30			
May	Fri	1	<b>May Day Bank Holiday</b>		
	Sat	2	Sea Cliff Climbing		
	Sun	3	Swanage/Portland		
	Mon	4	Simon Pape		
	Tue	5			
	Wed	6			
	Thur	7			
	Fri	8			
	Sat	9	Working Party & BBQ		
	Sun	10	Heathy Lea, Derbyshire Mick Hayes		
	Mon	11			
	Tue	12			
	Wed	13			
	Thur	14			
Fri	15	Joiners Shop			
Sat	16	Alnwick, Northumberland			
Sun	17	Dave (Snod) Helliwell			

**See below for details of these meets. Use your Yahoo group to see what members are doing on a day to day basis. Help your club by leading a meet. Contact the new Meets Secretary Gil Male - tel. 07958 169389 – email [gilemale@gmail.com](mailto:gilemale@gmail.com)**

## **Wednesday evening meets.**

It's that time of year again! Here are the planned venues for the month.

1 April	Harborough/Rainster	Miners' Arms Brassington
8 April	Easter Week	Yahoo Group to choose venue
15 April	Birchens	Robin Hood
22 April	Wildcat	County and Station
29 April	Lawrencefield	Millstone
6 May	Stoney Middleton	The Moon

## **France in April Ruth Gordon**

There will be a trip to France around 15<sup>th</sup> - 30<sup>th</sup> April staying at Buis les Baronnie and Orpierre.

If you are interested contact

Ruth Gordon [alistair.ruth@btinternet.com](mailto:alistair.ruth@btinternet.com) or 01629 56636.

## **Little Langdale – 18-19 April Gill Radcliffe**

This meet is based at the Fylde Club Hut in Little Langdale at NY 31575 03014. We have reciprocal rights with the Fylde MC and have enjoyed many successful meets at this hut over the years. The location, in one of the most attractive valleys in the Lakes, is ideal for walking, climbing and mountain biking. Nearby peaks include Wetherlam, Great Carr and Pike O'Blisco which together form part of a horseshoe walk around the valley (and the line of the Three Shires Fell Race). It is only a short drive into Great Langdale for classic rock climbing venues, while the nearby slate of Hodge Close offers more esoteric and hard climbing opportunities, as well as a dry-tooling venue.

Mountain biking is available in nearby Grisedale Forest. The hut is only a short walk from the Three Horseshoes pub and I look forward to you joining me there on Friday evening ahead of a sociable and active weekend in the hills.

Gill@farfields.co.uk Tel: 01246 569134 / 07816 072138

## **18 April "The Greatest Survival Story Ever Told!"**

If you are at a loose end on Saturday April 18th at 7.30pm, why not make your way to Hathersage Memorial Hall for an illustrated lecture on Ernest Shackleton's expedition to cross Antarctica via the South Pole, just 100 years ago.

Geoff Selley is the current custodian of a talk which has been handed down in direct succession from Dr Hussey, one of the original expedition members. He will be giving a presentation, which includes images reproduced from the original lantern slides taken by Frank Hurley, the expedition photographer. With the eerie glow of the magic lantern slide show, you will be transported back to that heroic age of Antarctic Exploration." Tickets cost £5 and include light refreshment. Contact Heather Rogers 01433 650884.

## **1-4 May Swanage/Portland Simon Pape**

Many Oreads know the climbing around Swanage; some were even involved in first ascents in the area. We've started visiting during the winter over the last couple of years. This year, I thought we could wait for some warmer weather. Some of crags do have bird restrictions, but there will be more than enough to keep us occupied for a long weekend.

Boulder Ruckle is the main crag and has a reputation for hard, serious routes. My single experience, with a competent partner and a dead calm sea on a warm January day, suggests otherwise, but the routes did seem steep. If that's too adventuresome for you, then there are easier offerings at Subluminal or Cattle Troughs. Failing that, the Isle of Portland just down the coast offers some of the finest Sports climbing in the UK (outside of Stoney Middleton dale, anyway). Our base for the weekend will be Acton Fields Campsite (GR 992785, [actonfieldcampsite.co.uk](http://actonfieldcampsite.co.uk)). They should have plenty of space for both nylon and metal tents and claim we don't need to book!

If you're interested in coming, please let me know.

Simon tel. 07813 616563 email [s.pape@virgin.net](mailto:s.pape@virgin.net)

## **9 - 10 May Heathy Lea Working Party and Barbecue Michael Hayes**

We will once again be doing our annual spring clean of the Derbyshire hut on the weekend of the 9th May. This year's working party will be a mixture of cleaning, painting and woodcutting. The Hut is in a good condition and just needs a tidy up see it though the next 12 months. I would like to encourage as many Oreads as possible, both Full and Prospective, to turn up and help, I will be there from 10.00 am on Saturday morning so please come along and give your support - even an hour or two will make a real difference. Please feel free to bring your own gardening tools and chain saws! The weather will of course be good so I plan on having the usual large bonfire on the Saturday evening to get rid of the rubbish. Bring your BBQ and Solid and Liquid refreshment and join in the party. As usual it will also be a good occasion to grab a few hours out on our local crags over the course of the weekend. So please make the effort and come along to help and support (tea making is appreciated as well!) If you need more information or just want to confirm that you will be able to help then please give me a call on 07771700913. Michael Hayes Heathy Lea Hut Custodian.

## **16 - 17 May Northumberland. Dave Helliwell**

Oreads need no introduction to the county. Set in the Cheviot rain shadow, good weather is guaranteed. Excellent walking, cycling and rock climbing can be found. We are stopping further north this time, near Alnwick, not far from the coastal path and nearer to crags such as Bowden Doors, Kyloe and Berryhill. I will arrange for some local experts to show us the best offerings.

We are staying at the Joiners' Shop, Preston, near Chathill, just off the A1 and

seven miles from Alnwick. It appears to be well equipped for cooking and eating, has an open fire, hot showers and 18 bunk beds in rooms of two to three. There's covered storage for bikes and you can even bring your dog!

The cost will be £10 a night.

Places are limited so you had better book early.

## **1-15 August Dolomites for the summer Alps Trip**

### **Roger Gibbs**

Located in northern Italy, and representing a true mix of Italian and Austrian culture, these so-called 'Pale Alps' contain climbing of every shape and size. Single pitch sport crags lie beside kilometre-long traditional routes, with climbs which are steeped in history running parallel to modern bolted lines. The area is also renowned for its via ferrata, cabled routes predating the Great War which give superb access to some of the World's most striking summits. The metal wires, interspersed with breathtaking ladders and unlikely suspension bridges, provide aerial assault courses which combine the thrill of an ascent on rock with the security of a protected mountain scramble.

Tofana di Rozes is one of the most striking mountains in the Dolomites. Although rare to see it without a halo of cloud on the summit, it dominates the landscape and can be seen from miles around. It is actually the smallest of the three mountains which form the Tofana group and, at 3225m, it stands just a few metres shorter than the neighbouring Tofana di Mezzo and Tofana di Dentro, yet its dominating form has captivated the hearts and minds of climbers for over a hundred years. Like much of the area around the Falzarego Pass, the Tofana group did not remain unscathed during the First World War, and there are numerous war tunnels around the mountain's base. The Castelletto area suffered another bout of mine warfare; from here the Austrian troops were able to control much of the Val Travenanzes and thus much of the movement through the area. Over a period of six months, the Italian military dug a 500m long tunnel and laid a charge of dynamite, blowing away the summit of the Castelletto tower. Forty years later, the tunnel was used to equip the first section of via ferrata Giovanni Lipella. As well as the via ferrata, Tofana di Rozes has some excellent climbs, generally in the upper grades. These are located on the south face on a series of large pillars. More recently some high quality modern semi-bolted routes have been opened, all of which are technically challenging and on excellent rock. They are a credit to their creators. The length and difficulty of all the routes on this mountain, combined with the high altitude of Tofana di Rozes itself, means that none of them should be taken lightly, and experience in moving quickly at a high level is essential to avoid a night-time epic. Route finding is generally not too difficult although, like many of the classics, there are numerous variations to the routes which can lead to confusion.

The Sella Towers are iconic in Dolomite climbing and are an exceptionally popular venue. Perched high up above the Sella Pass, they look particularly impressive, providing a good photogenic backdrop for the coachloads of tourists frequenting the area. The Sella Towers are made up of four towers although the 4th is not particularly well known in for its climbing and not covered in this guide. 1st Sella Tower - This is the smallest and most popular of the three towers with the sunny

south face stealing the show as the most frequented in the group. The routes are shorter, very accessible and, almost without exception, excellent. This tower is a victim of its own success, and an increasing amount of polish is found on the routes here. 2nd Sella Tower - The 2nd Tower is famous for its steep north face and very compact rock. The Messner (North Face Direct) route is featured in Reinhold Messner's book 'The Seventh Grade' and is notorious for its committing nature. The Kasnapoff route that starts up the north face and moves round onto the northwest ridge has become a classic. 3rd Sella Tower - This is the largest of the three towers and is home to the Vinatzer route, another famous one which is well worth a look.

Iconic symbol of the Dolomites, the Tre Cime are world famous in the climbing community and as such need little introduction. For the uninitiated there are in fact eleven or so towers that make up the group, but it is the three monoliths and their north faces that have captured the imagination of tourists and climbers alike for years. Cima Piccola, as the name suggests, is the smallest of the three and is found on the east side. Cima Grande is the largest at 2999m and its north face makes up one of the prestigious six classic north faces of the Alps. Cima Ovest on the west side of the group completes the famous trinity and has a somewhat enigmatic persona featuring several hard routes that are rarely repeated. The climbing here is some of the best in the Dolomites, certainly for the situations and surrounding scenery. From a geological perspective the north faces here are impossibly steep, often overhanging for an imposing and daunting 500m vertical height. Here you get a true big wall climbing experience that is hard to find elsewhere in Europe. The climbing isn't all about the north faces though and there is some excellent climbing of all grades to be found on the sunny south and east faces. The approaches are simple making the routes very accessible. The Tre Cime themselves are perched on a pedestal giving fantastic views of the surrounding area once on the climbs. All this comes at a price however; as the tourist icon of the Dolomites don't expect peace and quiet down at the base of the towers, or in fact on the routes themselves! Climbers have become a major attraction for those coming to view the Tre Cime so expect a small army of telephoto lenses aimed your way for most of the day when climbing any of the classic routes. From a climber's perspective there are five towers to be considered: Cima Piccolissima, Punta Frida, Cima Piccola, Cima Grande and Cima Ovest. To the north and northeast of the group lie Torre Toblino and Monte Paterno, a pair of small but impressive peaks that are home to two excellent via ferrata. Both Delle Scalette and Sentiero de Luca are highly recommended for those wanting to have a relaxing day viewing the north faces as the scenery is nothing short of stunning. The routes are usually in best condition from August to October (the south-facing routes can generally be climbed earlier). Make sure you check the conditions in the descent gullies, which can hold snow late into the season. A standard rack is sufficient for most of the routes at the Tre Cime, although for routes like Comici-Dimai you will need at least 16 quickdraws if you wish to clip all the fixed gear. Some parties on the more difficult climbs (generally VIII+) opt to haul gear, especially if going for the onsight attempt. Because the routes and abseils are overhanging on the north face a set of prusiks is mandatory.

If you're not inspired yet, check out James Rushforth's paean to the area:

<http://www.rockfax.com/climbing-guides/books/the-dolomites-rock-climbs-and->

[via-ferrata/](#)

The glamorous fleshpots of Cortina provide alternative attractions, plus walking, biking and sightseeing.

We plan to go from about 1<sup>st</sup> – 15<sup>th</sup> August. Campsite details to follow. Let me know if you're going to join us!

Rog, Sharon and Ben

Roger Gibbs: [roger@tilda.com](mailto:roger@tilda.com). Tel. 07770 2372708.

## **Your new committee**

President: Pam Storer

Vice-president: Derek Pike

Secretary: Rob Tresidder

Membership secretary:

Treasurer: Keith Gregson.

Hut bookings secretary: Derek Pike.

Meets secretary: Gil Male.

Newsletter editor: Ruth Gordon.

Additional committee members :

Nigel Briggs, Tony Howard, Pete Lancaster, Chris Radcliffe, Chris Wilson.

### **Tan yr Wyddfa Hut Sub Committee:**

Dave Helliwell (Hut Custodian), Chris and Roy Eyre, Ruth Gordon, Tony Howard, Tony Smedley, Pam Storer

### **Heathy Lea Hut Sub Committee:**

Mike Hayes (Hut Custodian), Dave Helliwell, Steve McDonagh, C. (Rusty) Russell and Pam Storer

## **News, Articles and Reports from Meets.**

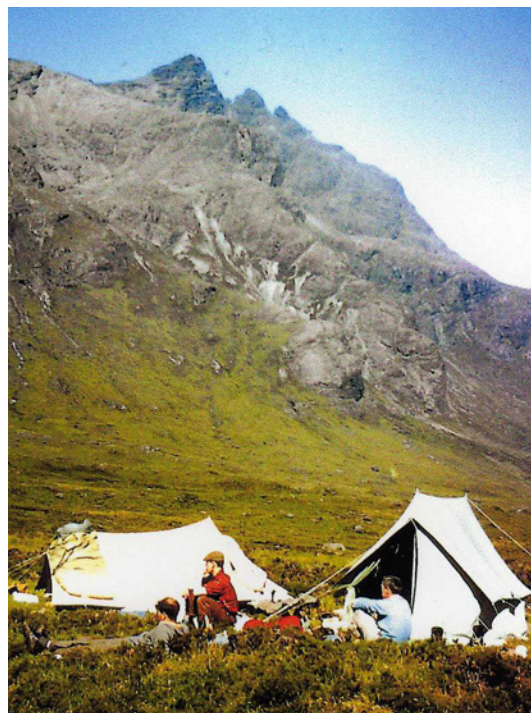
### **Farewell to Chuck.**

A group of old friends gathered on 5th March at Tan -yr -Wyddfa to say farewell to Chuck Hooley. His ashes were scattered on the look-out rock across the railway track, a short distance up the path towards Snowdon. They shared memories and appreciation for all he has done over the years for the Oread, drank a toast to him, and read, from the 50<sup>th</sup> Anniversary Book, the fitting poem by Brian West "Tan-yr -Wyddfa".

The memorial bench will be delivered and installed at the hut at the beginning of May.



## The Sligachan Meet, May 1964. Jack Ashcroft.



*Left: Marsco Buttress in profile seen from Sligachan. Right: Glen Sligachan camp in 1964 with Sgurr nan Gillean – Pinnacle Ridge on the skyline.*

Regarding the Sixties meet at Sligachan, referred to recently in Rusty's Puzzle Corner, I can shed a little more light. There were five of us, Brian Cooke, Walter Richardson, Dave Penlington, Jim Kershaw and myself. I don't think there was anything official about it – Cornwall and Pembroke were coming into vogue for Spring Bank Holiday about that time.

We five however, met at Sligachan on Saturday night, 16<sup>th</sup> May and slept in Brian's dormobile whilst the wind and rain buffeted the vehicle about a bit. Undeterred, we walked into Glen Sligachan on Sunday 17<sup>th</sup> May and erected two tents, one being Brian's pre-war ridge tent. It was not the most comfortable night with no sewn-in ground sheet and the wind and rain still came up the Glen.

On the Monday, 18<sup>th</sup> May we all walked up Harta Corrie, Penlington demonstrating how easy it was to ascend the Bloody Stone. The rest of us said "Well done."

Tuesday 19<sup>th</sup> May there was some improvement in the weather and so all five of us traversed Clach Glas and Blaven, Jim with his fishing rod strapped to his back. He didn't believe the weather would improve as we left camp so prepared for an alternative. It turned out a perfect day.

*Right: Walking off the South ridge, Blaven, 1964.*



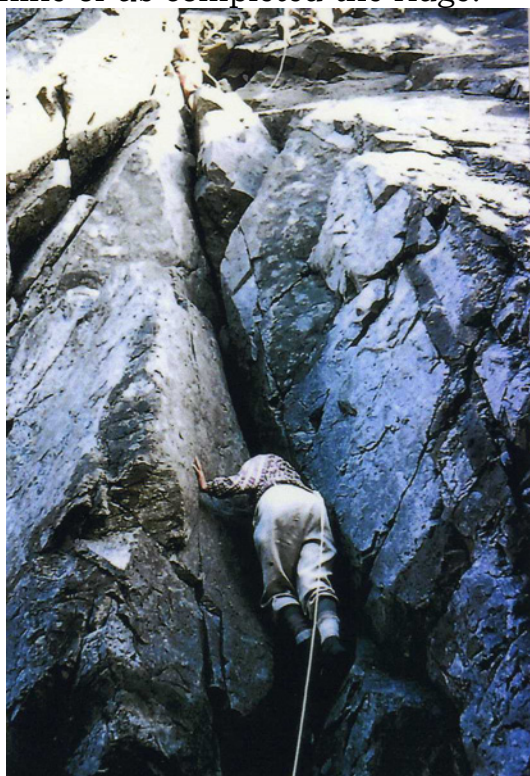
Wednesday 20<sup>th</sup> was the morning Brian and Walter “gardened” half a route up Marsco Buttress, as referred to by Rusty. Jim went fishing. Dave and I, Dave rather half-heartedly, packed gear for the main ridge traverse, Gars-bheinn to Sgurr nan Gillean. We bivvied just north of Gars-bheinn at midnight having climbed a direct route from the JMCS hut, Loch Coruisk.

At dawn on Thursday 21<sup>st</sup> we were on our way along the eight mile ridge and eleven Munros. The weather just held, getting rather murky in the late afternoon. We were all back at camp by 5 or 6.00pm having pulled in Sgurr-na-ha-Uamha - a steep descent to Harta Corrie.

It had been a day to remember and we had miraculously ascended all of the peaks of the Greater Traverse over three days. To differentiate, the Great Traverse is the main ridge from Gars-bheinn to Sgurr nan Gillean.

We walked out of Glen Sligachan into the Hotel bar on Friday 22<sup>nd</sup> in late afternoon sunlight. Saturday and Sunday was journey home ready for work on Monday 25<sup>th</sup> May at our diverse locations. I think I recall Jim stayed in Scotland for more fishing.

There was a second Great Traverse when there was an official Spring Bank Holiday meet jointly with the Derwent M.C. That would be in 1976 when eight or nine of us completed the ridge.



*Left: The Thearlach Dubh Gap. Right Sgurr Dearg Innaccessible Pinnacle 1964.*

Just a few more facts: In 1964 Brian and I led through on the Thearlaich-DubhGap. We all five soloed the Inn Pin. We all bypassed King's Chimney via Collie's ledge and doubled back to Sgurr Mhich summit. Penlington led the rope up the Bhasteir Tooth via Naismith's route and Radcliffe led the rope up Naismith's route in 1976. That's my recollection!

For some real history and facts read “The Cuillin of Skye” by Ben Humble – Ernest Press facsimile edition 1986. A great read, putting Skye and its mountaineering history into real perspective from 1544 – 1952.

## The Spring Stride 22 April 2015 Rusty Russell



I am always apprehensive in leading walks for the club lest on the one hand there is mass participation and the senior members are over faced, or on the other hand the seasoned performers appear and require a more testing and adventurous outing than that on offer. This year's Spring Stride tended towards the latter part of the dilemma with Michael Hayes Snod Nick Evans, Ruth, Pam, Chris Radcliffe, Helen Griffiths and Brian West in attendance. A simple walk up one side of the Dove valley and down the other seemed suddenly unadventurous, but the good spirits of the party and some contrived ascent of loose rock and mercifully well rooted grass at Pilsbury Castle, and a diversion across a delightful little ravine and round behind Sheen Hill on the return seemed enough to keep the party sufficiently amused. We were well received at the Packhorse Inn for a convivial

lunch, and all seemed to be well.

Snod's mode of conveyance on arrival, at the cutting edge of modern technology, bestowed additional kudos upon our party



SPRING STRIDE  
FRENZIED ACTIVITY AT  
THE LUNCH BREAK

## Information on Member Activities

### Gordon Gadsby

It is with great sadness that I report the death of Gordon Gadsby on Friday 13th March at 2.00 pm in the City Hospital, Nottingham. He initially did very well after his first operation but then had to have a major second surgery which proved too much for him. His funeral is on April 1<sup>st</sup> at 2.45pm at Bramcote Crematorium. A full obituary will appear in a future issue.

Meanwhile many messages and tributes have been received:

“He will be greatly missed by a lot of people.” Uschi Hobday

“John and I were very sad to hear of Gordon's death, we have very fond memories of Gordon when we were all very young. As everyone knows he was a brilliant photographer and even did some painting if I remember rightly.” Lesley Dench.

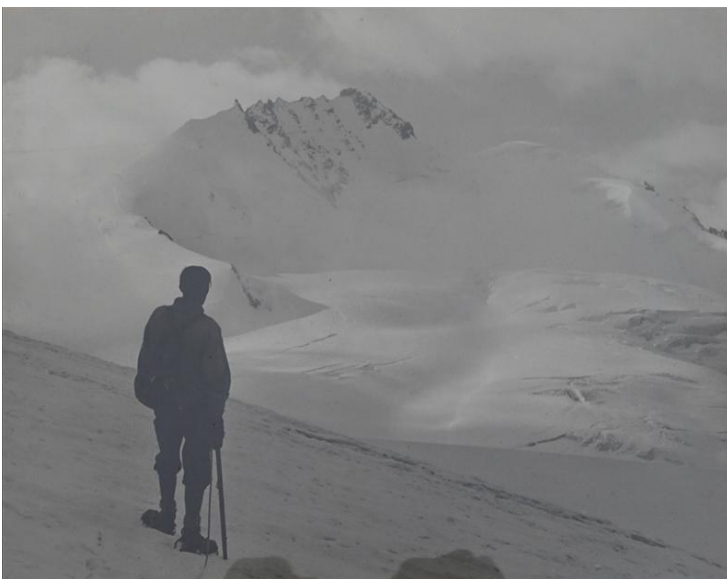
“We are sorry to hear the news. Please pass on our condolences to his family.”  
Nicola and Stephen Bashforth

“Very sorry to read that Gordon has died. We've all lost a good friend.”  
Chris and Jan Wilson

“So, so sad.” Bev and Kathy Abley

“I am saddened by the news of Gordon's death. When I was living in Derby in the early 1960's he was very active, and developing a reputation as a photographer. He was a very loyal supporter of the Oread so I am sure he will be greatly missed.” Dennis Gray

### Ernie Phillips Photograph at Tan yr Wyddfa



This evocative photograph belonged to Ernie Phillips and has been brought to Tan yr Wyddfa where it now hangs in the lounge. It would be good to put some information with it. Does anybody know whether it is Ernie in the photo or one he took of a climbing partner, and has anybody an idea as to where and when it was taken?

## Hobday's humour:



## Hut Bookings February - March.

### TAN-YR-WYDDFA

27-28 March	Bassetlaw Hill and M.C.
10-11 April	Saltley Hillwalkers.
12-16 April	Dickson Adams.
17-18 April	Hut Swap Fylde M.C.
20-23 April	Bootlace Buddies.
8-9 May	Cambridge Hillwalking Club

### HEATHY LEA

10-11 April	Panther Owners Club.
17-18 April	Extreme Sports.
9 May	Working Party and Barbecue.

“Whole Hut” includes the Oread room!

“Sole use – children present” means you may not stay overnight, even in the Oread room.

All queries, payments and bookings should be addressed to Derek Pike, the Hut Bookings Secretary:

Derek Pike, 19 St. Johns Drive, Chaddesden, Derby. DE216SD

Tel. 01332 670459 Email: [derekpike1234@btinternet.com](mailto:derekpike1234@btinternet.com)

**As from the 23rd April I shall be away for a month so all hut bookings to Pam Storer please.**

**you can reach Pam on her mobile at 07584493349.**

## Rusty's Puzzle Corner



### **This month's puzzle:**

The photograph is of Derbyshire's riposte to the Matterhorn (remember that Shutlingsloe is in Staffordshire). The photograph was taken at 2pm g.m.t. Hence the shade, a 50mm standard lens (35mm. equivalent) was used without cropping. The summit was photographed from a point such that the photographer and the nearest pub were equidistant from the summit. The route, recently ascended heroically by your president, is described by extracts from the literature as seen below.

*"The ascent wanders boldly across the nose diagonally from right to left. In parts it is very thin indeed and the problem is usually more one of balance than brawn. The finish however is very strenuous as the assortment of buttons, boot soles, dentures broken pipes and other domestic objects testifies..... this is a classic route uncomfortable underfoot but magnificent all round. The best footing is high up on the right hand side but in a place like this where boots cannot always gain a purchase other methods of locomotion may usefully be adapted..... ladies may use their feminine equivalents without any feeling of shame. Work up over the bulge until a good spike in the right hand crack comes within reach. There are huge finishing holds."*

The problem is in two parts: firstly determine the origin of the route description and secondly determine what would be the vertical size of the image of the peak itself, if the whole picture were printed un-cropped on an A4 sheet. ( the adjacent flat ground may be assumed to be at an altitude of 750 ft. for this purpose.)

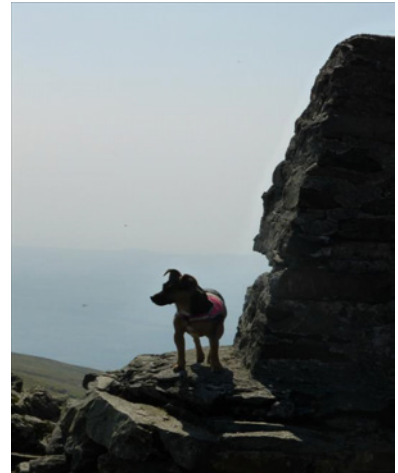
**Last month's puzzle:**

**The diminutive search and rescue dog meditating on the crags of Hebog is thinking:**

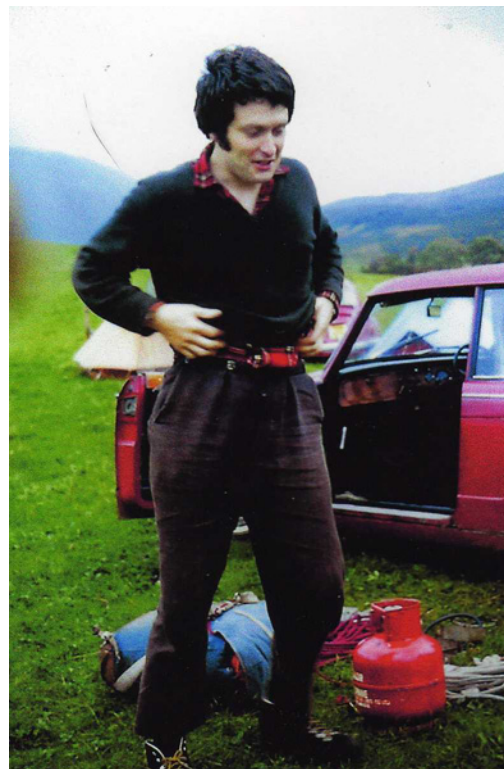
“I sniffed out those ham butties and - damn it - when I found them the buggers wouldn't give me any.”

“What's wrong with these guys? They stink to high heaven. Why don't they just follow their own pong back home?”

“Who's nicked my Bonios?”



**From the archives**



*Who is this handsome young devil?  
(Photo courtesy of Jack Ashcroft).*

Editor: Ruth Gordon, 4, The Terrace, Upper Lumsdale, Matlock, Derbys. DE4 5LB  
**Tel.** 01629 56636 07999 857 922. **Email** [alistair.ruth@btinternet.com](mailto:alistair.ruth@btinternet.com)

## Forthcoming Meets:

**Note there are some changes from the list published last month.**

**2015**

<b>April</b>			
3 <sup>rd</sup> – 11 <sup>th</sup>	Easter in France	Fontainbleau/Dijon	Roger Gibbs
15 <sup>th</sup> -30 <sup>th</sup>	France	Provence	Ruth Gordon
18 <sup>th</sup> – 19 <sup>th</sup>	Little Langdale	Fylde Hut	Gill Radcliffe
<b>May</b>			
2 <sup>nd</sup> – 4 <sup>th</sup>	Sea Cliff crags	Swanage/Portland	Simon Pape
8 <sup>th</sup>	Heathy Lea	Working party & barbecue	Mick Hayes
16 <sup>th</sup> – 17 <sup>th</sup>	Northumberland	Joiners Shop, Alnwick	Dave Helliwell
23 <sup>rd</sup> – 25 <sup>th</sup>	Camping Meet	Bank Holiday TBA	Leader required
<b>June</b>			
6 <sup>th</sup> – 7 <sup>th</sup>	Kiddies Meet	Heathy Lea	Neil Weatherstone
13 <sup>th</sup> -14 <sup>th</sup>	Thirlmere	Smithy Hut	Chris Radcliffe
<b>July</b>			
7 <sup>th</sup> - 10 <sup>th</sup>	Tan yr Wyddfa	Working party	Dave Helliwell
11 <sup>th</sup> – 12 <sup>th</sup>	Gogarth	Camping	Dave Mawer
<b>August</b>			
1 <sup>st</sup> -15 <sup>th</sup>	Alpine Meet	Dolomites	Roger Gibbs
29 <sup>th</sup> – 31 <sup>st</sup>	S Pembroke	Camping	Pam Storer
<b>September</b>			
12 <sup>th</sup> – 13 <sup>th</sup>	Wye Valley	Camping	Derek Pike
19 <sup>th</sup> -20 <sup>th</sup>	Heathy Lea	Joint with DMC	Eddie James
23 <sup>rd</sup> (eve.)	Curry Meet	Matlock	Simon Pape
26 <sup>th</sup> – Oct 3	Lundy	The Barn	Derek Pike
<b>October</b>			
<b>TBA</b>	Morocco	Tafraoute	TBA
<b>November</b>			
1 <sup>st</sup>	Dovedale Dash	Heathy Lea	Rob Tresidder
7 <sup>th</sup>	Bonfire Night	Fell Race	Mike Hayes
14 <sup>th</sup>	Annual Dinner		Leader required
21 <sup>st</sup> – 22 <sup>nd</sup>	Coniston	MAM Hut	Tony Howard
<b>December</b>			
5 <sup>th</sup> – 6 <sup>th</sup>	Bullstones Meet	Long Walk	Rob Tresidder
16 <sup>th</sup> (eve.)	Black Rocks	Night cragging	Rob Tresidder
25 <sup>th</sup> – Jan 1	Christmas/NY	Tan-y-Wyddfa	TBA