

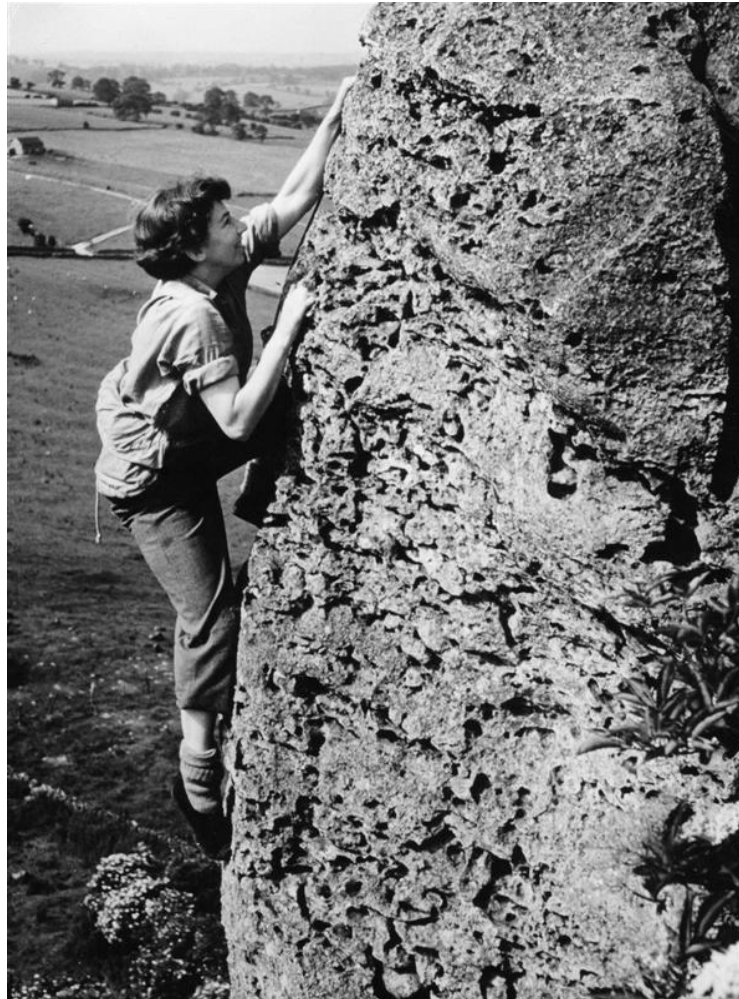


OREAD MOUNTAINEERING CLUB MAGAZINE

JULY - AUGUST 2014

This beautiful photograph shows Betty Gardiner, sporting her usual climbing gear, on the final pitch of the Long Climb at Rainster Rocks, Brassington.

Photograph: Paul Gardiner.



Editorial

A bumper issue to see us on for the holiday period. After a cold, wet May and a few disappointing evening meets we've finally had a bit of summer to cheer us up and whet our appetites for the holidays. Kinder Downfall last Sunday was just magic, finally got to do the amazing Mermaids' Ridge after all these years. Homage to Herford, Jeffcoat and Laycock – what a bold lead, over a century ago! This issue gives details of the pre Alps meet on 11-13 July, the club meet to the Ecrins and the August bank holiday trip to Pembroke. **Booking required!** Write ups include Easter in the far north, the recent North York Moors extravaganza and some evocative tales and photos of times past and good friends gone. Next issue will be with you for early September. Enjoy the summer and don't forget to share your travellers tales with us all. I eagerly await your letter, quill pens welcome, or email if you prefer. Enjoy!

What's on.

Wednesday evening meets

Here are the crags and alehouses we will frequent if the weather gods are kind. If not it will be Wirksworth Wall and the Royal Oak as usual.

2 July	Stoney Middleton/Horseshoe	The Moon
9 July	Dovedale	The Watts Russell
16 July	Turning Stone Edge	The Old Poet's, Ashover
Then venues to be decided via the Yahoo Group until		
3 September	Millstone Edge	The Millstone

Malham Cove 5-6 July Michael Bate

This meet will not take place at this time because it clashes with the Tour de France opening in Yorkshire, resulting, no doubt, in loads of people visiting the area and creating traffic chaos. I hope to rearrange the meet for later in the year.

Michael Bate tel 07414661668 email mjbate@gmail.com

Pre-Alpine Meet: Tan-yr-Wyddfa 12-13 July

Chris Radcliffe

This is the last opportunity to hone your fitness before heading for the Alps. The aim will be to ensure we get some good walking in before climbing and to eschew those roadside crags.

If the weather continues to be fine and settled it will be an opportunity to approach Cloggy via the col and complete some of the long classics. Even if the weather is poor, we can fit in some scrambling such as Craig Fawr Rib on Craig Cwm Silyn before walking back to the hut along the Y Garn ridge. If the weather is dire, there is always the Five- Cols route round Snowdon, including the Y Gribbin scramble.

I have invited the DMC to join us on this meet, so to ensure your place at the hut, please contact me to reserve your bed at the hut.

Chris Radcliffe Tel: Home: 01246 569134 Mobile: 07770 883259
email chris@farfields.co.uk

Alpine Meet 19 July – 10 August Pete Lancaster

**I am asked regularly, “Who is going?” and “When are they going?”
It would help me answer these questions if those intending to go could email me with their dates.**

Thank you!

By word of mouth, there are a good number going so far, so it should be another great meet!

Here's the details.

The venue for this year's meet is '*Camping d'Ailefroide*' in the heart of the Pays

des Ecrins in an idyllic setting among trees and mountains.

The campsite is big; it spreads through the valley above and below the village but does not appear crowded. One simply finds a spot, either in the trees or somewhere more open, and camps as there are no 'pitches'. There are lots of facilities on the site which are clean and well maintained; the fees are not expensive. There are electricity hook-up points but they are limited, however because we were in the trees, we didn't find it a problem without last year. For more details go on the official website: <http://www.ailefroide.fr/camping/> The village itself is very pleasant and has two well stocked supermarkets which even sell artisan bread; their produce rivals the bigger supermarkets for price. There are several bars and restaurants, one of which offered a glass of fruit juice, a coffee and a croissant for 2 Euros between 7.00 and 9.00am last summer – excellent value! There are two climbing/walking equipment shops both stocked with everything one might need including guide books. As to the latter, if anyone is familiar with the area and can recommend good guide books, then please let me know and I will pass on the info or post it through the Yahoo group. Within walking distance of the campsite there is world class bouldering and well equipped rock climbs both long and short and, of course, there are stacks of routes in the high mountains ranging from modern rock climbs to traditional alpine trips.

Half an hour's drive will give access to lots of excellent crags down the valley should you want a change. There is also a daily bus service down the valley. This meet is unusual in that one cannot book the site: they do not take bookings. This is not a problem, however, as the site is so big there will be space: we were there during the French holiday month, i.e. after August 1st and the site did not look anywhere near full. Arriving before August 1st however will give you more choices of pitch. Even though I cannot book on your behalf, I would like to know who is going, that way I might be able to help people coordinate their movements and activities.

You can contact me at petel1952@hotmail.co.uk or 0114 2301136. I look forward to hearing from you.

Pete Lancaster

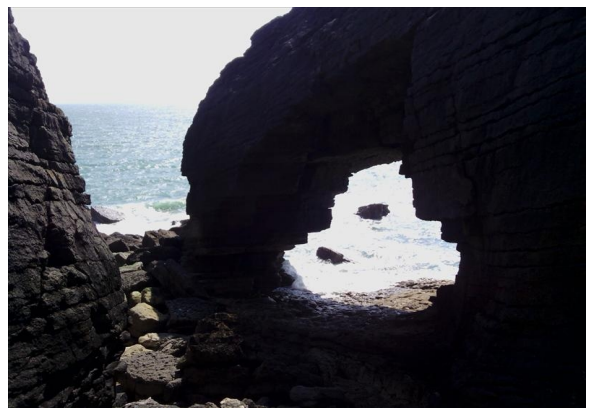
South Pembroke August Bank Holiday. Pam Storer

The August Bank Holiday meet this year will be in South Pembroke, camping at St Petrox Farm. The farmer has asked that we give him some idea of numbers and he will then reserve an area. **I**

definitely need to let him know if you need a hook up. Nick and I will be travelling down on Thursday 21st August. Do come and join us there is so much to do even if you have not been to any briefing.

Pam Storer tel - 07584493349 email pam_storer@Hotmail.com

Stunning rock architecture at Arch Zawn, Range West. Photo Mike Wren.

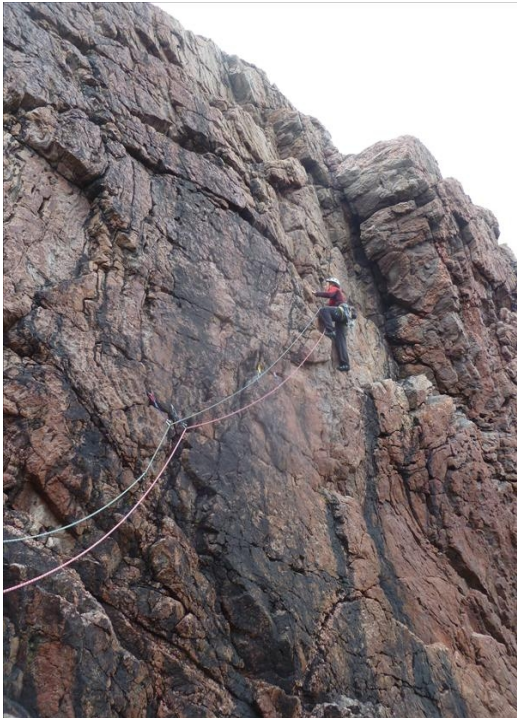


News, Articles and Reports from Meets.

Sheigra and Reiff at Easter Roger Gibbs and Dave Mawer

Perhaps the secret to a fantastic sunny trip to North West Scotland is to stick to the even years. We basked in sunshine while the Queen stood on a barge in the rain and scowled at her subjects back in 2012. We managed to repeat the trick this year, and 2009 proves my point but let's draw a veil over that trip!

A big team of 21 Oreads headed north for the Whit week in search of adventure.



After various stops en route, including an ascent of Ben Nevis and some roller coaster action, we reassembled at a very basic campsite. The lack of amenities on the campsite was more than compensated for by the beautiful beach a short stroll away. Most evenings, as the alpine-like glow lit up the ridge behind us, we took a stroll up the hill to gaze in wonder as the sun died in a blaze of rich reds and oranges. The “farmer” extracted a tanner from everyone with a wide grin, then made haste down the road to spend it on whiskey. The glee was so obvious that some speculated that he might not even be the farmer, just some canny Scot funding his own holiday.

Victoria on Wanderings, E2 5b Shiegra, 2nd geo.

Near the village of Sheigra are a multitude of small sea cliffs giving excellent climbing in an amazing setting. There are plenty of routes

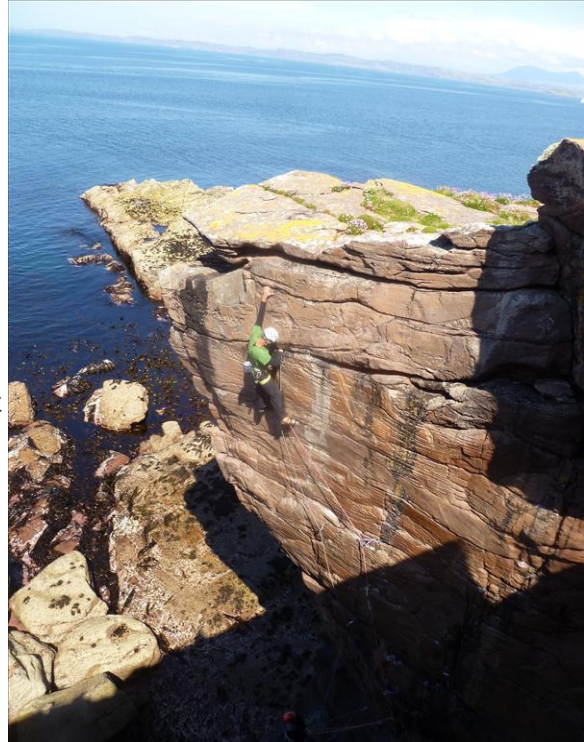
around the impressive gniess geos, on steep, wonderful rock.

The second geo has one of the most impressive walls in Scotland (according to no lesser an authority than the Scottish Mountaineering Club) which is covered in jugs and a huge number of starred routes. Several of these routes are in part indistinguishable, due to being able to climb almost anywhere on the wall at a similar level of difficulty. This does not detract - in fact it is one of the charms of this beautiful wall. One of the highlights here was Exorcist, a stunning slab that feels like it's overhanging. This has adequate but spaced protection that requires a little cunning; great moves each revealing the hidden holds as you commit and a stunning position over the waves.

The first geo has steeper and more exciting fare. The Sound of the Surf gives a three star pump fest and Monkey Man isn't much easier. Everything on this long wall seems to lean at an alarming angle, but perfect rock and generally good gear compensate.

A little further south is the handy outcrop of Creag an Fhithich (the crag of the raven, although the bird in question may have departed). Again there are lots of good looking mid grade routes to go at, but some streaks of water limited our choice a little. Sapphires gave superb butch undercutting with just a hint of terror getting onto the sloping ledge caked in bird poo.

The team enjoyed swimming, walking and bird watching, plus a few beers and some tall stories before heading a little further south to Reiff for the finale. A long (an hour plus) stomp across heather and bog brought us to Leaning Block Cliff. The butch steepness of Wall of Silence was exciting in the damp conditions. Losgaidh was even pumpier in full on wetness. The locals pitched up mid afternoon as the sun came round and dried up the classic of The Screamer just in time. *Photo right: Roger on The Screamer, E4 6a. Leaning Block Cliff, Reiff.*



We managed dinner in the Summer Isles Hotel and a madcap bike ride back to the campsite thanks to our valiant babysitter. Some of the team managed to bag the uber-classic of Ardverikie Wall on the way home – good effort!



Victoria and Tullan on Ardverikie Wall, “the best HS in the British Isles?”
The climbing and the weather and the company were marvellous but what really remains in the memory is the sense of peace from dallying in such a beautiful ancient landscape.

North York Moors - 14 - 15 June Chris Wilson

Friday evening saw 14 of us gathering at Cote Ghyll in Osmotherley and then sampling ales at the Queen Catherine. Located in the Hambleton hills, Osmotherley is a lovely little village. It gets its name from a clearing or 'ley' belonging to a [Viking](#) called 'Asmund' or a Saxon called 'Osmund'. Alternatively, a villager named Oswald (or Osmund) went out to gather firewood but failed to return. Her son found her dead or dying in the snow. Unable to carry her he lay down beside her and died himself. It is where Oswald's mother lies, hence Osmotherley.

(Remember this; you will be tested on it later.)

A wet start on Saturday saw Pete A. and John, staying in the adjacent hostel, arriving at the campsite and keen to get going. Eventually the walking party, boosted in number by Jan, Maggie and Sue, set off whilst the rest gave the crags a few minutes longer to dry.

The walk started up the Cleveland Way heading north towards Arncliffe Wood. Further on the 16th century Lady Chapel, Shrine of Our Lady of Mount Grace, was briefly visited. Jan had offered the potential of extensive views over the lowlands between Yorkshire's two prime areas of upland, the Dales and the Moors. The potential was real enough, however as they made their way north the first couple of hours were blighted with an extensive haze reducing any vistas to an enigmatic image.

Photograph, courtesy of Pete Amour, shows the group crossing Scarth Wood Moor, Jan in the lead, followed by Sue and Maggie, John Fisher bringing up the rear.



The route then followed the Lyke Wake Walk as far as Scarth Nick and lunch before turning south to reach Cod Beck, (locally known as 'Sheepwash') a popular beauty spot. There are no cod here, the beck's name coming from Cold Beck. It was then up the old drovers' road (High Lane) south for the next two miles. From the 17th century to the 1800's, cattle from the Scottish Highlands were driven to the markets of East Anglia, the Midlands and London at an average of 15 miles a day. The present day Chequers Farm was once 'Chequers Inn', a favourite drovers' watering hole. It now serves as a café, but the team were disappointed to find it closed so marched on to Cod Beck reservoir. Jan had said several times that a café stop at a fine sounding place called

Chequers was on offer, in the event the Chequers café had checked out, and now appeared to be a number of self catering properties.

Rejoining Cleveland Way the route passed Oak Dale Reservoir where safety fears led to the lowering of its water level in the 1990's. After a narrow path and alley the centre of Osmotherley was reached. Apart from its three pubs the village also has its market cross and a stone table from where John Wesley is said to have preached sermons and where fish was sold on Sundays after church. The village also sports a fine café that provided the team with full cream teas for £2.85 each! It was then up North End back to the camp site.

Meanwhile the climbing group had eventually got into action. The geology of the area is dominated by rocks of the Jurassic period, when fluctuations in sea level produced different rock types varying from shales to sandstones and limestones. Saturday was to be a limestone day and The Night Watch (VS 4b) at Whitestone Cliffe was my target after phone calls and emails had extolled its virtues. The crag has a certain reputation for attempting to fall down ever since its formation in a landslide in 1755. Armed with a two hour parking permit, Pete L., veteran of several ascents, led Simon and I down the steep descent gully to the foot of the route. A highly enjoyable and extremely well protected steep corner followed. The rock was good, if slightly damp, and the route as a whole justified its three star rating.

Arriving back at the car park en route to Peak Scar we realised that Sally and Tim had parked beside us. A dark, muddy walk into the nearby Peak Scar, with nettles guarding the base of the crag, had made them conclude that Sally leading The Night Watch was a better option.

The path they created however served the rest of us well. Despite being very steep and possessing a few loose parts Peak Scar (another 18th century landslide) is a far more friendly crag than Whitestone. By the time we arrived the sun was shining and the teams of Snod/ Ruth and Pete Wragg/ Laura had already climbed Twilight (MVS), Pemba Chimney (HVD) and Jordy (HS). Between us we went on to climb

Frenesi (a 3 star VS 4c), Dat Der (rather steep, VS 5a, and those with a short reach found the boulder problem start a challenge!) and the magnificent Birdland Direct (MVS 4b).

*Pete on Dat Der, VS 5a
at Peak Scar*

We then took a scenic drive back across the moors.

Beer, wine and a wonderful meal at the 18th Century Golden Lion rounded off the



day (there was a football match as well).

We awoke on Sunday to grey cloud and a fine drizzle. Fortunately the drizzle soon stopped and most of us decided to sample the local sandstone at the Wainstones. The 30 minute walk from the car park near the summit of Clay Bank follows a forestry track up the flank of Hasty Bank, passing under a green looking but impressive Raven's Scar before arriving at the Wainstones Needle and the climbing.

"Within this parish, on the summit of the mountain that overlooks the villages of Kirkby and Broughton, there is a singular monument, called by the neighbouring people, the Wain-Stones: which, according to the most probable etymology of the word may denote the stones of lamentation, and are probably Danish, erected in memory of some Danish chieftain slain here. It consists of a rude collection of stones some of them of an immense size, and all apparently in their natural position, except one which stands erect and appears to have formed a part of some ancient cromlech." (Rev. John Graves 1808)

A fine day's sport followed with everyone recording ascents of many of the classic routes:

Main Route (M)

Steeple Chimney (VD)

Little Bo-Peep (VS - 4b?)

Ling Buttress (HS 4b)

Groove and Crack (HVD)

Sphinx Nose Traverse (S)

Jackdaw Ridge (VD)

Jackdaw Gully (M)

Christopher (VS 4b)

The Bulge (VS 4c)

The Slab Climb HS 4b)

Central Route (HVS 5b)

Wall and Ledge (D)

Concave Wall (HVS 5b)

Virgin Wall (HVS 5a)

Tim's lead of the damp slab of Central Route was exemplary. In the evening we returned to the car park following the Cleveland Way, soaking up the sun and grand views before a pleasant drive home across the moors.

Elegantly colour-coordinated, Jan follows Snod up Concave Wall HVS 5b at The Wainstones.

Meanwhile, recounted by Pete Amour: Fisher and I gave some consideration to the area around Hawnbly approximately ten miles to the south-east. Having packed the car we took the twisty, but interesting route to the village through a mix of forestry, moorland and agricultural ground. Surrounding Hawnbly there are a series of footpaths giving a good selection for anyone on foot. John and I took a northerly route



onto the rounded Hawnby Hill, lunched, and then completed the higher ground over the ridge of Hawnby Hill Crag. On the descent our course took us east to cross the Hawnby road, where a gamekeeper's 4x4 had just stopped having observed us earlier on the high ground. We passed without contact. Having left the road we traversed the bog-planted track to the timber footbridge in the valley. We were clearly in close proximity of a curlew's nest, judging by its frantic and noisy activity. At about the same time we encountered a section of sodden bogland, and found what appeared to be a booted couple complete with teenage daughter in smart, but by now completely camouflaged trainers. To add to the girl's lack of enthusiasm Fisher encouraged her by exclaiming "You'll have to clean them when you get back, won't you!" It was conveyed in a true Fisheresque manner, I don't think we'll see that youngster on the hills again. The remainder of the jaunt followed the semi open woodland to the bridge below Hawnby, where a stiff climb up the 1 in 4 road brought the weekend's activities to a conclusion. Overall a really enjoyable weekend, the product of wonderful scenery, different but good crags and great company. Thanks to all who came and condolences to those who couldn't make it.

We were: Chris and Jan Wilson, Pete and Sue Lancaster, Snod Helliwell, Ruth Gordon, Pete Amour, John Fisher, Tim Cairns, Sally Dipple, Pete Wragg, Laura Booth, Simon and Maggie Pape.

Information on member activities

Congratulations to Paul Gardiner and Reg Squires on becoming honorary members of the Oread.

John and Lesley Dench have just moved to Church Stretton within sight and sound of the Long Mynd. their new address is;-
Fifth Acre, 7 Alison Road, Church Stretton, Shropshire. SY6 7AT Tel 01694 724663

Chuck Hooley

It is with great sadness that I report the death of Chuck Hooley, who passed away on 26 May. Our sympathies go to his wife, Margaret. An appreciation will appear in the September issue. It is likely that there will be an Oread gathering to scatter the ashes in due course. More information about this will follow when available.

Betty (The Bird) Gardiner 1926 – 2014

Memories from Paul Gardiner

The scene is the Pennant Valley, the year 1955 and it is a dark, wet night. On leave from the Forces, I am asleep, alone, but for the spooks at Bryn-y-Wern. I am awakened by a banging on the door, it is 2 a.m. and, on going down to open it, I find a couple in motor cycling gear. The smaller of the two turns out to be Betty Bird, who has had a lift from Derby in the sidecar of Andy Renville's motor cycle combination.

That was the first time I met my future wife. I was wearing just my underpants.....

The photo, right, was taken at Bryn-y-Wern on that weekend in July 1955. It shows Andrew Renville, top, Tony Smith and Betty Bird, bottom.

During the following twelve months, whilst I was waiting to get demobbed, Betty was doing what were considered then quite daring things on rock in Wales and the Lakes, with Ray Handley, Ray Colledge and others, travelling from her flat in Newark by Lambretta Scooter to get a lift and riding in the back of an A30 van up to Scotland to

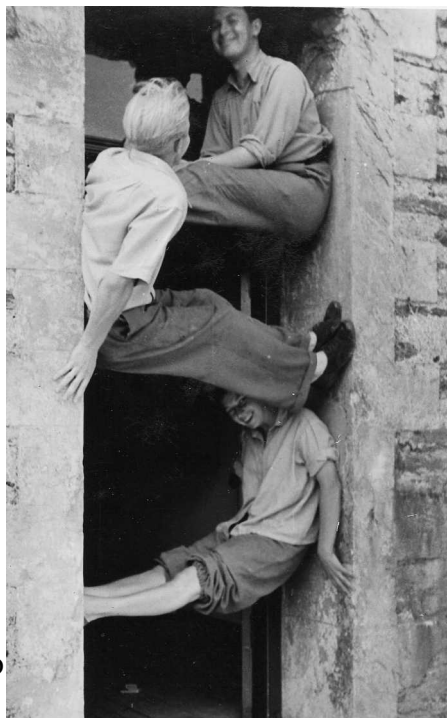


camp and ski on Cairngorm before there was neither chair lifts nor tows. Skiing was her real passion which she continued after our marriage in 1957, belonging to the school of "Downhillers" devoted more to speed, rather than Style – at that time most of us skied in what the late Doug Godlington described as the "Crowdecote Crouch".

Derek Carnell's photo shows a Derby Ski Club trip to Kitzbuhl; (left to right) Betty, Len Wright, Dave and Pam Weston, Patti Carnell and Clive Toplass.

Though rock climbing gradually declined, she loved to be in the hills, sometimes just running a "Chuck Waggon" and putting up tents for Long Distance Walkers. Latterly she became quite a hard walker herself, only complaining if a scheduled 10 miler got beyond 14 miles. Betty managed to keep walking until 2010 when Dementia prevented further activity.

A qualified Nursery Nurse, she had a great love of children, was a keen gardener and will be remembered by many as a happy, caring person.



And that laugh!!!! I seem to recall that it was Ernie Phillips who christened her the "kookaburra".

Ray Colledge 1922-2014



Ray Colledge, pictured in 2002. Photo Derek Carnell.

An appreciation by Dennis Davis

I first met Ray Colledge in Idwal Cottage Youth Hostel in North Wales. Ray was a forceful character, when it came to mountains. He would always plan the routes he wanted to do in Alps.

I was invited to his home in Spondon near Derby. When I arrived in Spondon, I realized I had forgotten the number of his house. I stopped to ask a young lady walking by, whether she knew him. I explained he was single and had a green MGB sportcar. She answered to me: "No, but when you find his address will you give it to me!"

We travelled to the Alps frequently together. On one occasion we went in his MGB. After I had been driving he took over. But before, he meticulously wiped the steering wheel, and put on white driving gloves.

Over a time we did many climbing routes in the Alps together. Among them Route Major and The Sentinel Rouge of the Brenva Face, the North Face of the Plan, the Macugnaga Face of Monte Rosa, the North Face of the Triolet (in 1960, a very steep ice face), the South Ridge of the Aiguille Noire, the North Face of Bionnassay and along the ice ridge which appeared to be overhanging on both sides! on up to the Vallot hut and then traversed Mont Blanc and over Mont Maudit, Mont Blanc de Tacul and down to Montenvers and Chamonix. On one holiday we did the Cassin Route on Piz Badile, also the first British ascent of the North Face of the Grosshorn from above the hut near Vengen and the route on Chardonnet (needing pitons).

Ray's greatest success was the Eiger, which he climbed with his friend Dan Boon. There is a full account of the Eiger in the Alpine Club Tribute to Ray.

Ray was a member of Shipton's Himalayan expedition on Cho Oyu. On the way

over to the Menlung Glacier and the Nang Pala Pass, Ray made the first ascent of Pangbuk, (21,750 feet) with Tom Boudilon.

I shall never forget the happy times with Ray and the pleasure he gave us. He will not be forgotten.



Ray Colledge at Sauze in 1980 Photo Derek Carnell

Chris Radcliffe writes:

Ray was an enthusiastic and active member of the Oread when I joined the club in 1968. I do not recall trying to climb with him, but he was often out on club meets and evening climbing sessions, usually climbing with Ray Handley or Derrick Burgess. Many of his key alpine routes were climbed with Dennis Davis, who would sometimes be around at weekends.

Ray was always polite and a true gentleman but never aloof, always willing to talk to anyone. In later years he would attend the club meet at the pub on a Tuesday evening and Gill recalls that when she joined the club in 1986, Ray was happy to talk to her and make her feel welcome.

Ray was fastidious and this showed in the way he looked after his green MGB car, which was always kept in immaculate condition. I was surprised, therefore, that he agreed to follow Pete Scott and myself to climb Fantan B on the Lleyn Peninsula. This involved access down a steep and very rough track. He was climbing with Derrick and they followed in the MGB while Pete and I were in my Austin 1100. We parked up at a deserted village and walked to the climb. This is a multi-pitch slightly scrappy VS and it started to rain as we reached the upper pitches. However we completed the climb and returned to the cars.

There is a lot of smooth rock on the track and, slickened in the rain, we found it impossible to drive out. We had to leave the cars, walk to a phone box and call the neighbours at Tan-y-Wyddfa to alert others on the Meet to come and collect us. Next morning we then had to find a local farmer to pull us out with a tractor (at a cost of £5 each). Even the tractor struggled on the slick track, so I had to multi-point turn so that he could pull me out backwards with my front wheel drive assisting by driving in reverse. This cost me a new rear sub-frame. It was equally problematic with the MGB and I have this abiding memory of Ray

hunched over the steering wheel in absolute concern, while his cherished car was dragged up the hill. No more climbing that trip, but it certainly felt like an epic weekend.

It was not long after this that Ray had his brilliant alpine season in 1969 when within two weeks he and Dan Boon (James Fullalove) – a young lad in the Rock and Ice – climbed the Walker Spur, Pear Buttress on Mont Blanc and North face of the Eiger. His long and distinguished Alpine and Himalayan exploits will be mentioned elsewhere, but I feel privileged to have known Ray and in a small way shared good times with him.

Pete Scott remembers: Ray Colledge Taught Me To Ice Climb or How I lost My Ice Axe

I was first introduced to Ray Colledge by Dennis Gray during a chance meeting at Almscliffe, a favourite crag of mine while a student at Leeds University in the early sixties. It was now the late sixties and I had recently moved to Derby and taken a job on the Courtaulds site at Spondon and was anxious to locate a climbing club in the Derby area. It didn't take long to establish that Ray also worked on the Spondon site and was well acquainted with the Oread. Within a few months, based on directions from Ray, I had located the pub in Borrowash where the Club met on Tuesday evenings.

I had climbed regularly since going to Leeds in 1961, a lot on rock, especially on gritstone local to Leeds where I was introduced to the hand jam, the most essential and most restful hold I was ever to come across during the next 50 years. A few snowy climbs in Scotland and the Lakes, followed by similar but rather more serious climbs in the Swiss and French Alps and by 1968 I felt quite experienced.

Well, actually no! I had this nagging feeling that I might be pushing my luck if snow suddenly became icy and the angle of the slope tilted alarmingly despite my newly purchased Charlet ice axe having a beautiful wooden shaft and a nice straight pick.

One evening in the upstairs bathroom at Tan y Wyddfa I was wallowing in the bath. (Yes, before the modern extension there was a bath in the bathroom!) Ray and I were once again engaged in conversation and having done my homework researching Ray's twenty years Alpine and Himalayan experience I saw my chance:

"Ray, what do I do if the snow/ice suddenly becomes steeper?"

In his quiet, polite, modest and unassuming manner Ray offered me a Eureka moment.

"Cut a step."

The following year, 1969, my alpine climbing partner, Ron Lake and I met up with Ray and his partner Dan Boon in Chamonix. It was suggested we team up and climb the Pear Buttress on the Brenva Face of Mont Blanc. What a chance to test out my new knowledge recently gleaned, with the mentor alongside, possibly to offer a crit' as we climbed!

We left Col de la Fourche shortly after mid-night, running fearfully through the night across the icy couloirs between Old Brenva, Red Sentinelle, Route Major and The Pear, crampons squeaking and sparking on the intervening rock ribs.

Ron broke a crampon en route, so he was facing a hopping ascent of Mont Blanc. Here was my chance. I led up the initial ice slopes. The ice steepened and I cut a long ladder of little steps. Ray and Dan arrived soon after and Ray offered 'Congratulations'. I had passed. We climbed the huge pear shaped rock buttress on a beautiful sunny day, plodded up the long snowy slopes to the summit of Mont Blanc de Courmayer, across Col Major and thence to Mont Blanc.



The photo, taken by Ray, shows Pete Scott, Ron Lake and Dan Boon after the ascent of Pear Buttress.

Wearily we descended via Grands Mulets Hut aiming for Aiguille du Midi telepherique. At the very crevassed area known as La Jonction some short wooden ladders aided the descent of some little seracs:

“Dan, can you just hold the bottom of this ladder as I climb down?”

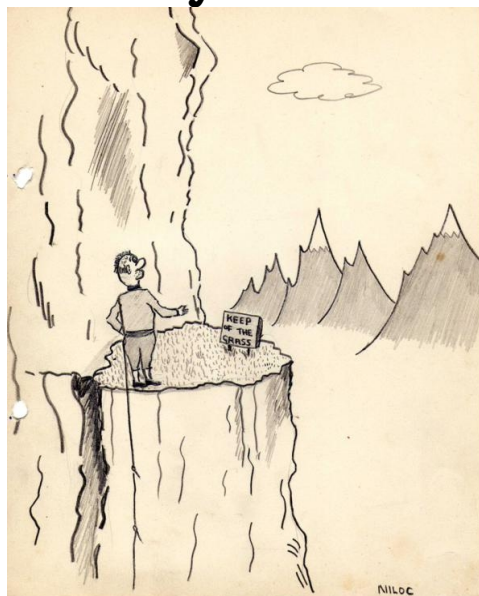
Perhaps Dan became distracted, the ladder slipped, I tipped backwards and my beautiful axe flew through the air and disappeared for ever down a crevasse.

Postscript.

Only on a few occasions did I join Ray on climbs, usually in North Wales. There was always an element of adventure but the most enjoyable aspect was listening to his mountaineering reminiscences ranging from disagreements with Shipton on Cho Oyu, fleeing from an angry farmer in the Nantle Valley and escaping by soloing up the first pitches of rock on Craig y Bera, to an amorous exchange with a female climbing partner on a climb on Cwm Silyn. All delivered in humorous self deprecating manner.

A lovely man, always remembered.

Hobday's humour:



The Ecrins is, of course, a National Park....

Hut Bookings May-July.

As Derek is currently in hospital with pneumonia the bookings information is less detailed than usual. We wish him a speedy recovery. He is contactable by text 07876 238312 but not email at present.

TAN-YR-WYDDFA

July 11-12 Oread M.C.
July 26-29 Pam Storer Whole hut

HEATHY LEA

Both Huts are available for Oread use through the summer holiday period. Please let Derek know if you intend visiting.

“Whole Hut” includes the Oread room!

“Sole use – children present” means you may not stay overnight, even in the Oread room.

All queries, payments and bookings should be addressed to Derek Pike, the Hut Bookings Secretary:

Derek Pike, 19 St. Johns Drive, Chaddesden, Derby. DE216SD

Tel. 01332 670459 Email: derepike1234@btinternet.com

Rusty's Puzzle Corner

Last month's puzzle.

The correct answer - “The outfall of Hayeswater, under High Street” was supplied within minutes of circulating the newsletter by – guess who - Michael Hayes of course!

This month's puzzle:



What, in Heaven's name, are they doing - and why? Answers, on a postcard please, are expected from the participants and all other interested parties.

Forthcoming Meets: Chris Radcliffe

2014

July			
12 th – 13 th	Cloggy: pre-Alps	Tan-y-Wyddfa	Chris Radcliffe
19 th –Aug 10	Alpine Meet	Ecrins	Pete Lancaster
August			
23 rd – 25 th	S Pembroke	Camping	Pam Storer
September			
13 th – 14 th	Clwyd	Limestone cragging	Derek Pike
20 th – 21 st	Joint with DMC	Heathy Lea	Ed James
October			
4 th – 5 th	Gogarth	Valley of the Rocks	Dave Mawer
14 th – 28 th	Kalymnos	Hot Rock	Pam Storer
November			
1 st	Bonfire Night	Heathy Lea	Mike Hayes
2 nd	Dovedale Dash	Fell Race	Rob Tresidder
15 th	Annual Dinner		
22 nd -23 rd	Coniston	MAM Hut	Tony Howard
December			
6 th – 7 th	Bullstones Meet	Long Walk	Pam Storer
10 th	Black Rocks	Night Climbing	Rob Tresidder

Message from the Meets Secretary

I am now working on the 2015 Meets List and would welcome any requests, offers to lead meets or opinions on the current Meets programme. Is there a favourite area that you think we should visit? Would you prefer more camping meets or more obscure venues? Any comments would be helpful.

Chris Radcliffe.

Email chris@farfields.co.uk tel 01246 569134 (home) 07770 883259 (mobile)

Copyright – Oread Mountaineering Club.

Editor: Ruth Gordon, 4, The Terrace, Upper Lumsdale, Matlock, Derbys. DE4 5LB

Tel. 01629 56636 07999 857 922. **Email** alistair.ruth@btinternet.com